

1 PHOTO FRONT DOOR



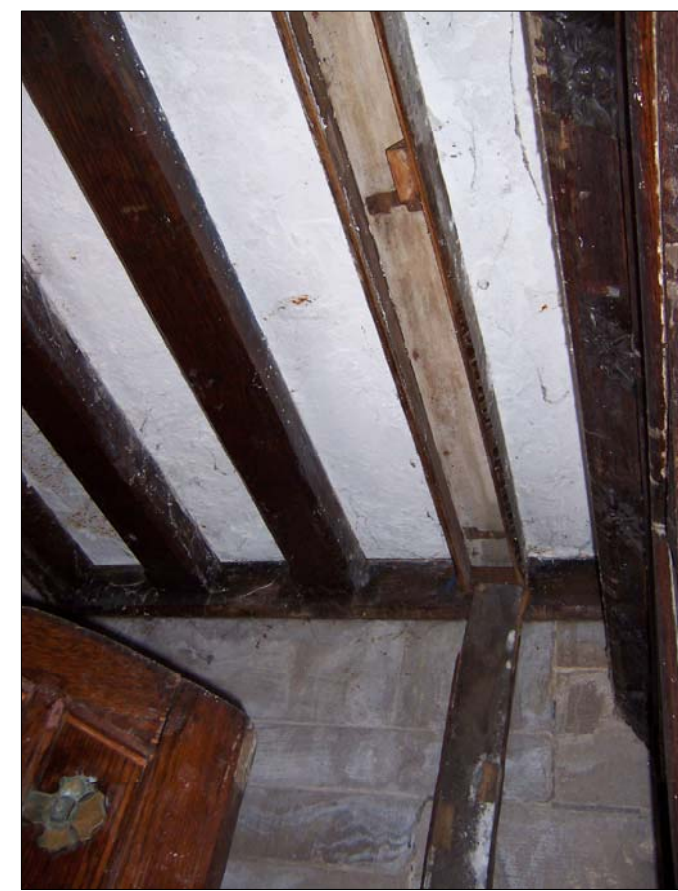
2 PHOTO VESTIBULE DOOR



6 PHOTO RADIATOR ENCLOSURE TYPE A



8 PHOTO KITCHEN LOOKING EAST



10 PHOTO VESTIBULE CEILING



3 PHOTO STAIR NO. 1



4 PHOTO RADIATOR ENCLOSURE TYPE D



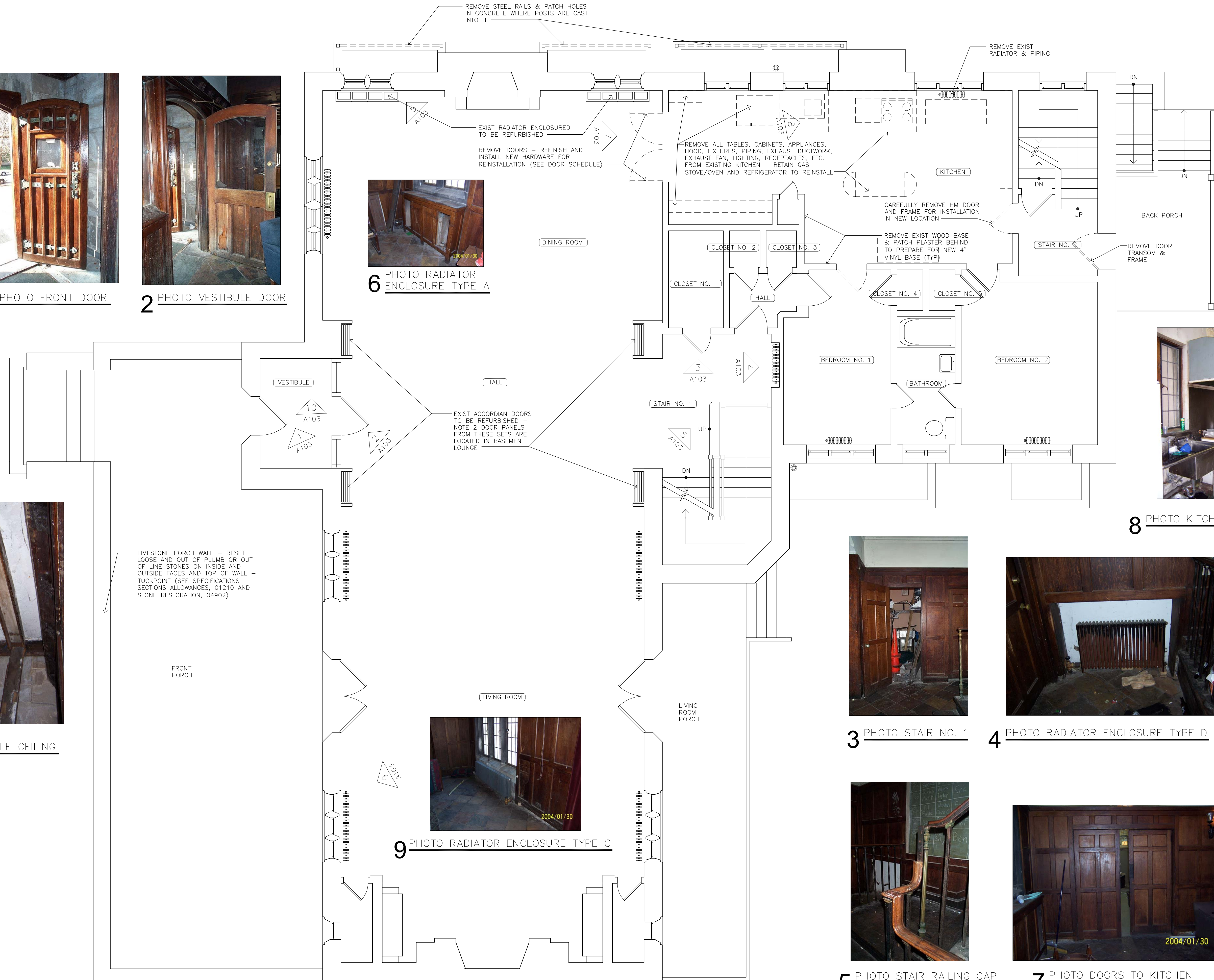
9 PHOTO RADIATOR ENCLOSURE TYPE C



5 PHOTO STAIR RAILING CAP



7 PHOTO DOORS TO KITCHEN

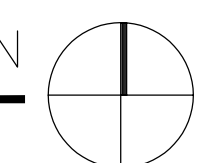


LIMESTONE PORCH WALL - RESET LOOSE AND OUT OF PLUMB OR OUT OF LINE STONES ON INSIDE AND OUTSIDE FACES AND TOP OF WALL - TUCKPOINT (SEE SPECIFICATIONS SECTIONS ALLOWANCES, 01210 AND STONE RESTORATION, 04902)

EXIST ACCORDIAN DOORS TO BE REFURBISHED - NOTE 2 DOOR PANELS FROM THESE SETS ARE LOCATED IN BASEMENT LOUNGE

**A** FIRST FLOOR PLAN - SELECTIVE DEMOLITION

SCALE: 1/4" = 1'-0"



**HEITZMAN ARCHITECTS**  
111 NORTH MARION STREET OAK PARK, ILLINOIS 60301  
PHONE: (708) 848-8844  
FAX: (708) 848-8845  
email: heitzman@comcast.net

**FIRST FLOOR PLAN  
SELECTIVE DEMOLITION**

**ALPHA DELTA PHI FRATERNITY**  
5747 SOUTH UNIVERSITY AVENUE  
CHICAGO, ILLINOIS 60647

I HEREBY CERTIFY THAT THESE PLANS WERE PREPARED UNDER MY DIRECT SUPERVISION AND TO THE BEST OF MY PROFESSIONAL KNOWLEDGE THEY CONFORM TO THE CHICAGO BUILDING CODE

FRANK E. HEITZMAN  
ARCHITECT  
ILLINOIS REGISTRATION NUMBER: 01-8255



**A103**

2004.02.05 BID  
2003.11.19 REVIEW  
ISSUES AND REVISIONS