



**Construction Management
is a Career for Life**



What is Construction Management?

Construction Project Management is the overall planning, coordination and control of a project from inception to completion aimed at meeting a client's requirements in order to produce a functionally and financially viable project that will be completed on time within authorized cost and to the required quality standards.



What do Construction Managers do?

- *Coordinate and supervise* the construction process from the conceptual development stage through final construction
- *Make sure* that the project gets completed on time, within budget, and according to owner's requirements
- *Work with* owners, engineers, architects, and others stakeholders
- *Supervise* the planning, scheduling, and implementation of designs for buildings, roads, bridges, or other projects



Work Environment

- *Main office or “out- in- the- field” office, at the construction site, construction managers monitor the overall construction project*
- *Decisions regarding daily construction activities generally are made at the jobsite*
- *Managers might travel considerable distances when the construction site is not close to their main office or when they are responsible for activities at two or more sites*



Earnings

“Median annual wages of salaried construction managers in May 2008 were \$79,860. The middle 50 percent earned between \$60,650 and \$107,140” – Based on Bureau of Labor Statistics

Future

Based on Bureau of Labor Statistics, Construction Managers will see a 17 % growth in demand by 2018.



First Step...



First Step...

Get involved with Student Chapter





Activities / Services of student chapters

- Construction Site Tours
- On-Campus Guest Lectures
- Accreditation Training (LEED GA; CMIT)
- Professional Development Assistance
- Social Programming
- On-Campus Service



Our Activities / Services

•**Guest Lectures**

- Bring in practitioners to talk about technical or project-specific topics - average 25-30 members
- Joseph McCarthy (JF McCarthy Construction)
 - LEED & Green Construction Practices
 - BIM & Its Impacts on the Construction Process
- Anne Cotter - Construction Entrepreneurship:
 - The Joys & Pitfalls of Being a WBE in Chicago
- John Caswell US GSA CM for the Largest Owner



Our Activities / Services

Extra-Curricular Accreditation

- Construction Manager in Training (CMIT)
- LEED – Green Associate
- OSHA 10 training
- BIM Training

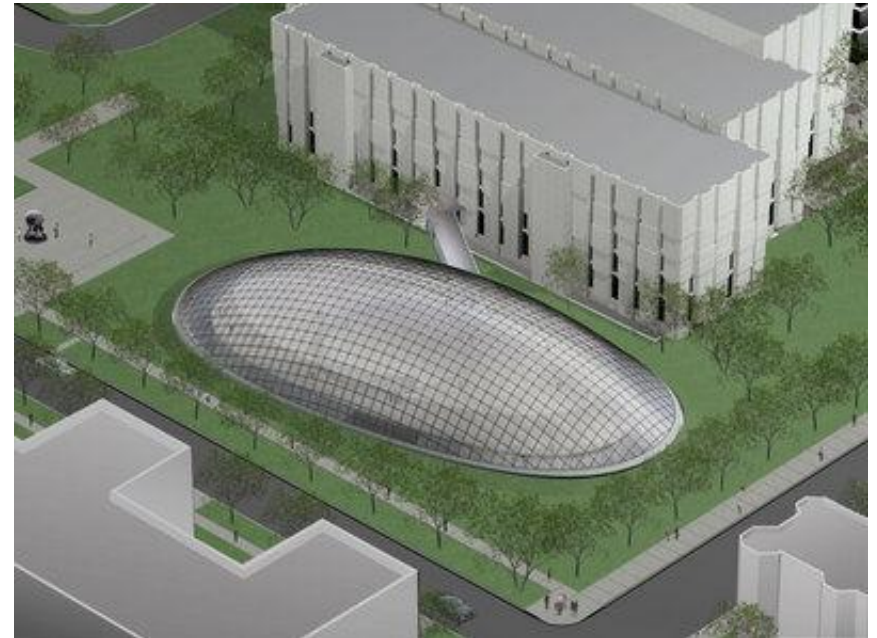


Our Activities / Services

Construction Site Tours

- U of C Mansueto Library (Cotter Construction)
- O'Hare Modernization Program
(Parsons Brinckerhoff)
- Legacy Tower at Millennium Park
(Walsh Construction)
- Harris Hall at Northwestern University
(Turner Construction)
- Calumet City Waste Reclamation District
(MWRD)

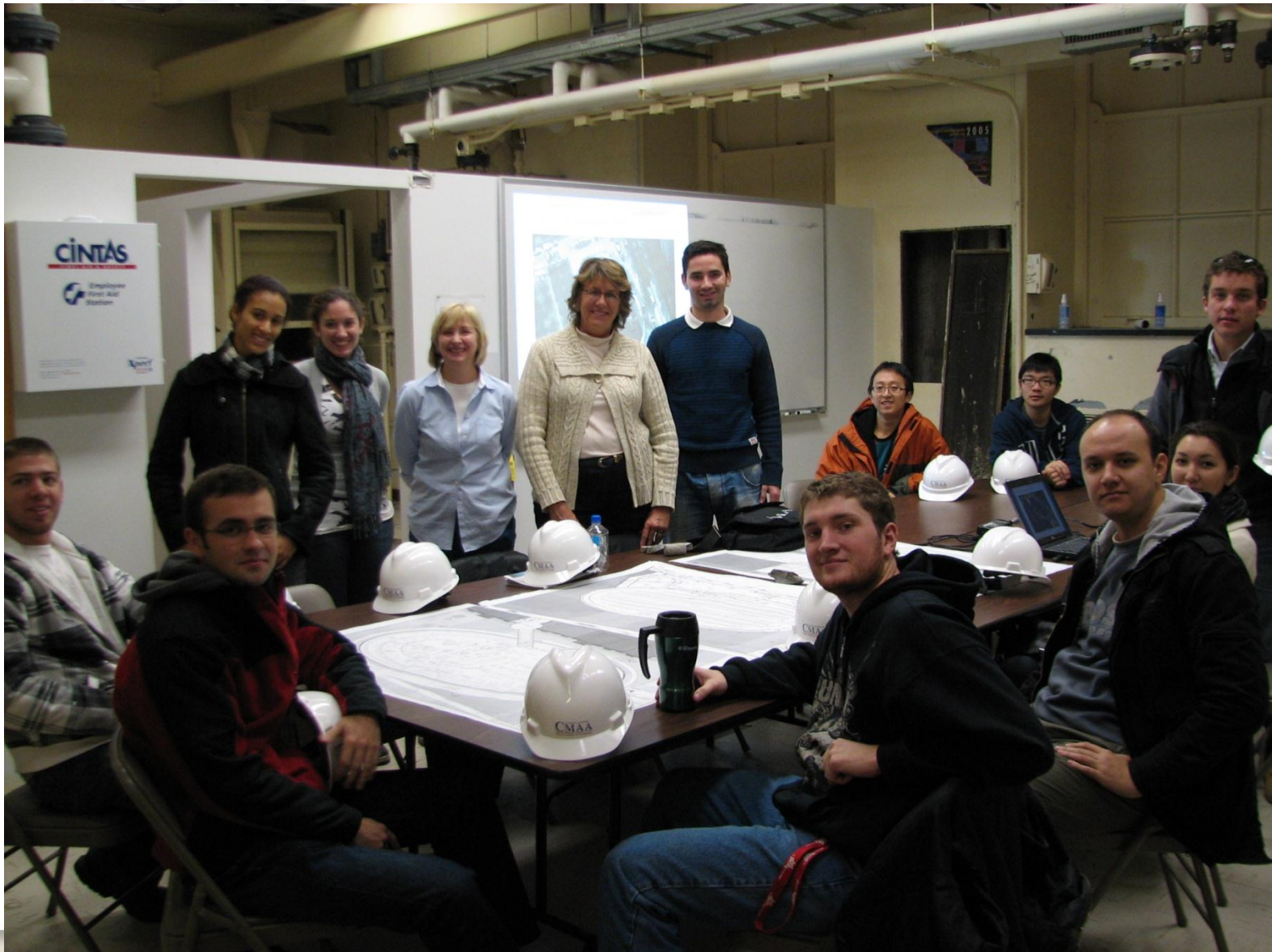
University of Chicago Joe and Rika Mansueto Library (Cotter Consulting)



CMAA



CMAA



What is the CMAA ?





O'Hare Modernization Program (Parsons Brinckerhoff)



CMAA



CMAA







Legacy at Millenium Park (Walsh Construction)



CMAA



CMAA





Harris Hall Northwestern University (Turner Special Projects)

CMAA





CMAA





Golf Practice 2009

CMAA



CMAA



CMAA





Golf Practice

2010

CMAA



CMAA



CMAA





CMAA National Conference
Orlando, FL
October 2009

CMAA







Thank you.

Q&A