

Renaissance French Styles



Chronology of French Design Periods

Early French Renaissance

Francois I 1494-1547

Henry II 1547-1559

Francis II 1559-1560

Catherine de Medici (regent for Charles IX) 1560-1563

Charles IX 1560-1574

Henry III 1574-1589

French Renaissance

Henry IV 1589-1610

Louis XIII 1610-1643 (Louis Treize “trez”)

Cardinal Mazarin and Anne of Austria (regent for Louis XIV) 1642-1661

Louis XIV 1643-1715 (Louis Quatorze “cators”)

Régence Philippe II, Duke of Orléans 1715-1723 (“regency”)

Louis XV 1723-1774 (Louis Quinze “cans”)

Louis XVI 1774-1792 (Louis Seize “says”) executed

Directoire 1795-1799 (French Revolution 1789-1799)

Consulate (Napolean Bonaparte “First Consul”) 1799-1804

Empire (Napolean Bonaparte) 1804-1814

Restoration (Louis XVIII) 1814-1830

Louis XIII Style (1610-1643)



Louis XIII

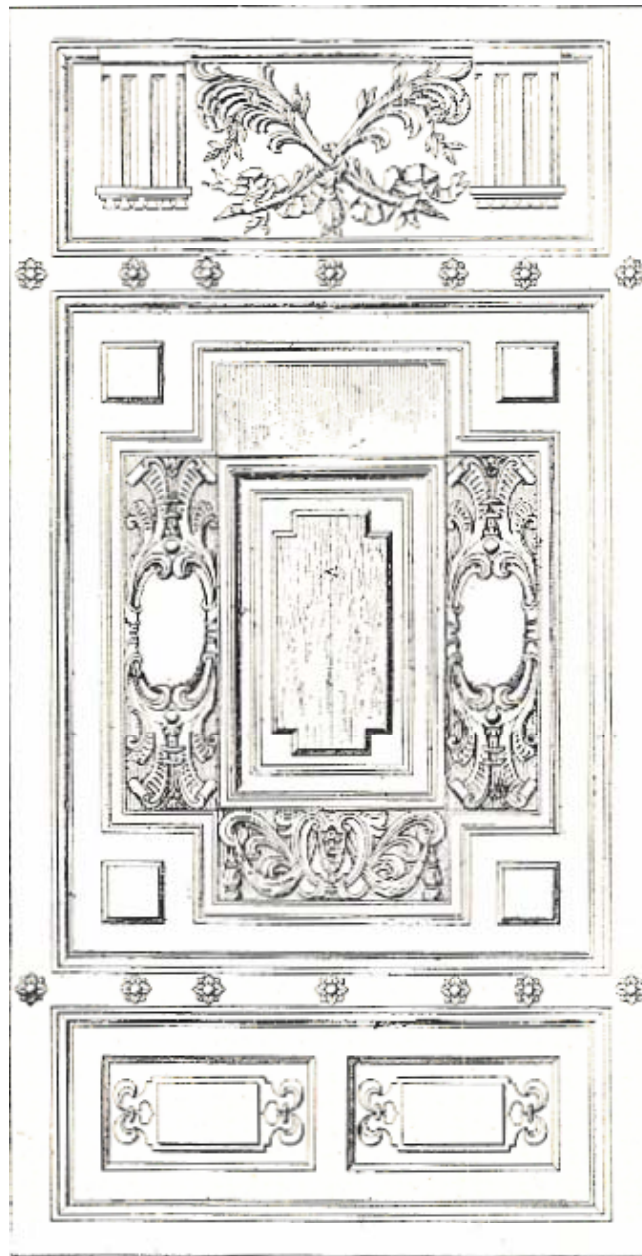


Fig. 13. — Porte de l'église Saint-Gervais,
à Paris.

Louis XIII



Fig. 12. — Dessus de porte du vestibule d'honneur,
au palais de Fontainebleau.

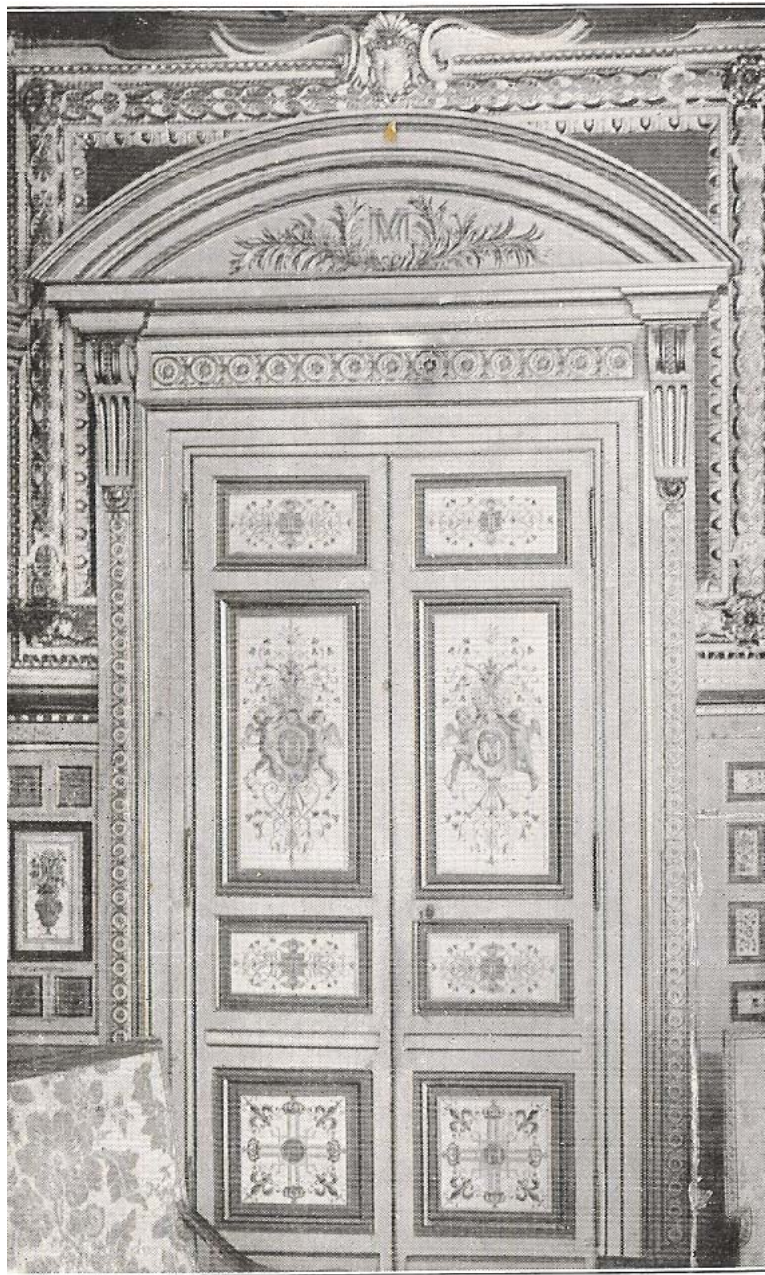


Photo Panzer

Salon de Louis XIII, au palais de Fontainebleau.

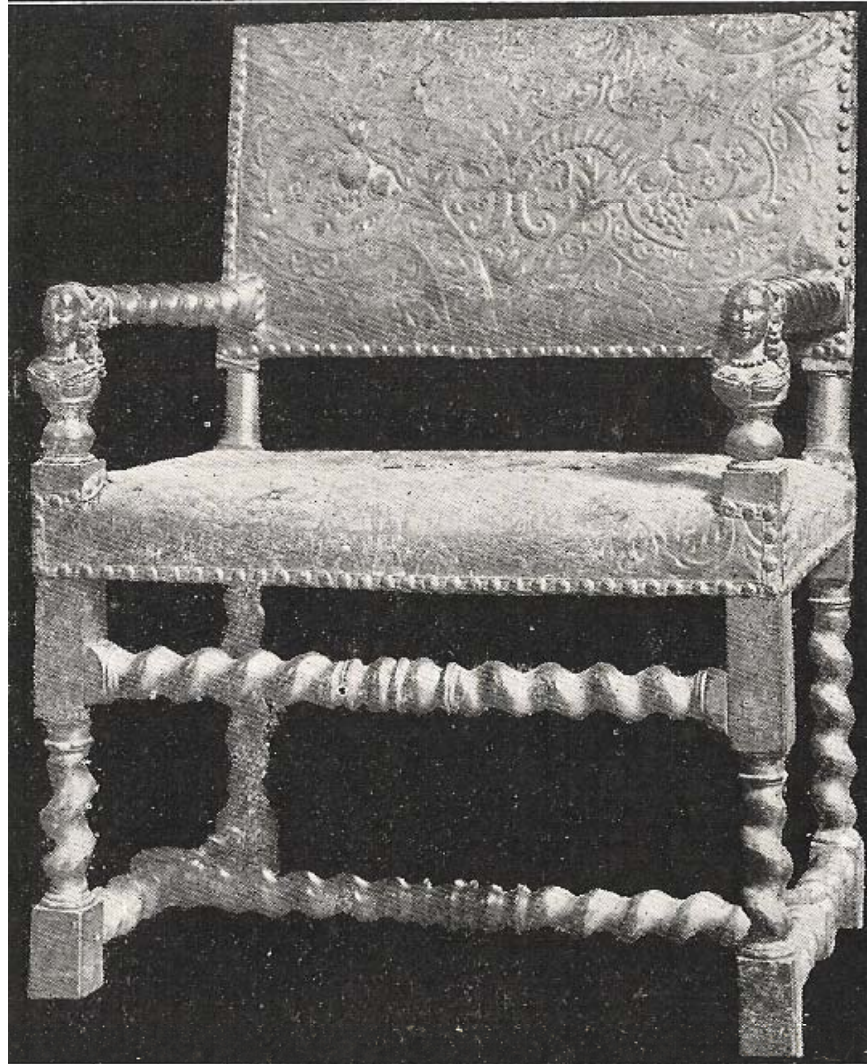
Louis XIII



Photo Grandou.

Fig. 11. — Église Saint-Gervais, à Paris.

Louis XIII



*Fig. 19. — Fauteuil de cuir gaufré.
Musée de Cluny, à Paris.*

Photo Panara

Louis XIII



Fig. 20. — Chaise recouverte de cuir uni.

Louis XIII



Photo Braun

Fauteuil provenant du château d'Effiat (Puy-de-Dôme).
Musée de Cluny, à Paris.

Louis XIII

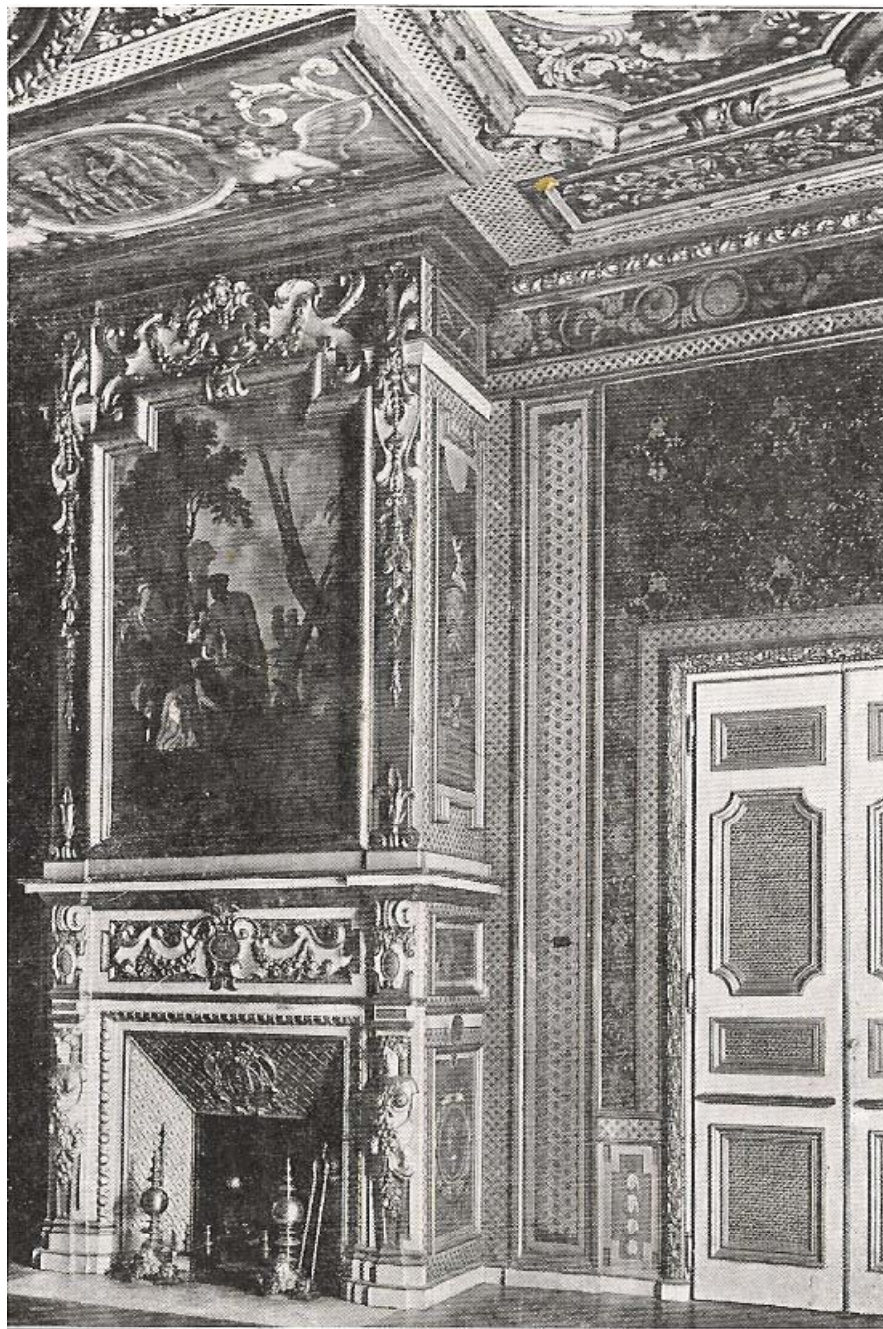


Photo M. H.

Grand salon, à l'ancien évêché de Lisieux.

Louis XIII



GUIRLANDE DE DRAPERIES — PARIS — HOTEL SULLY.



Fig. 23. — Armoire à deux corps.
Palais de Fontainebleau.

Louis XIII



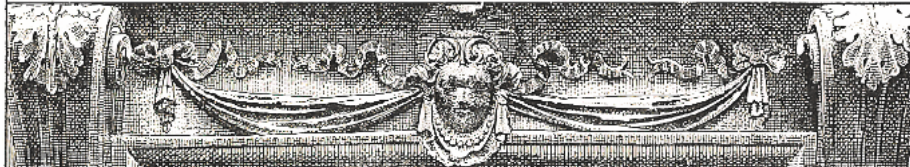
CARTOUCHE — PARIS — HOTEL FIEUBET — QUAI DES CÉLESTINS.



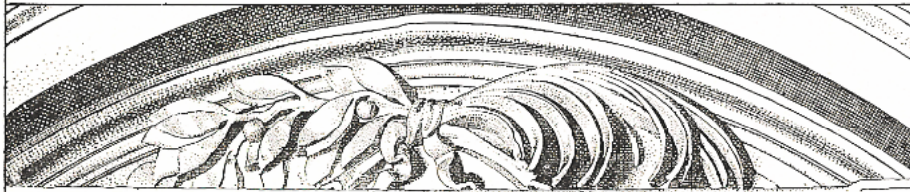
CARTOUCHE — REIMS — ÉGLISE SAINT-RÉMI.



BRANCHES DE PALMIER
FONTAINEBLEAU



GUIRLANDE DE DRAPERIES — PARIS — HOTEL SULLY.



BRANCHES DE PALMIER ET DE LAURIER — FONTAINEBLEAU — VESTIBULE.

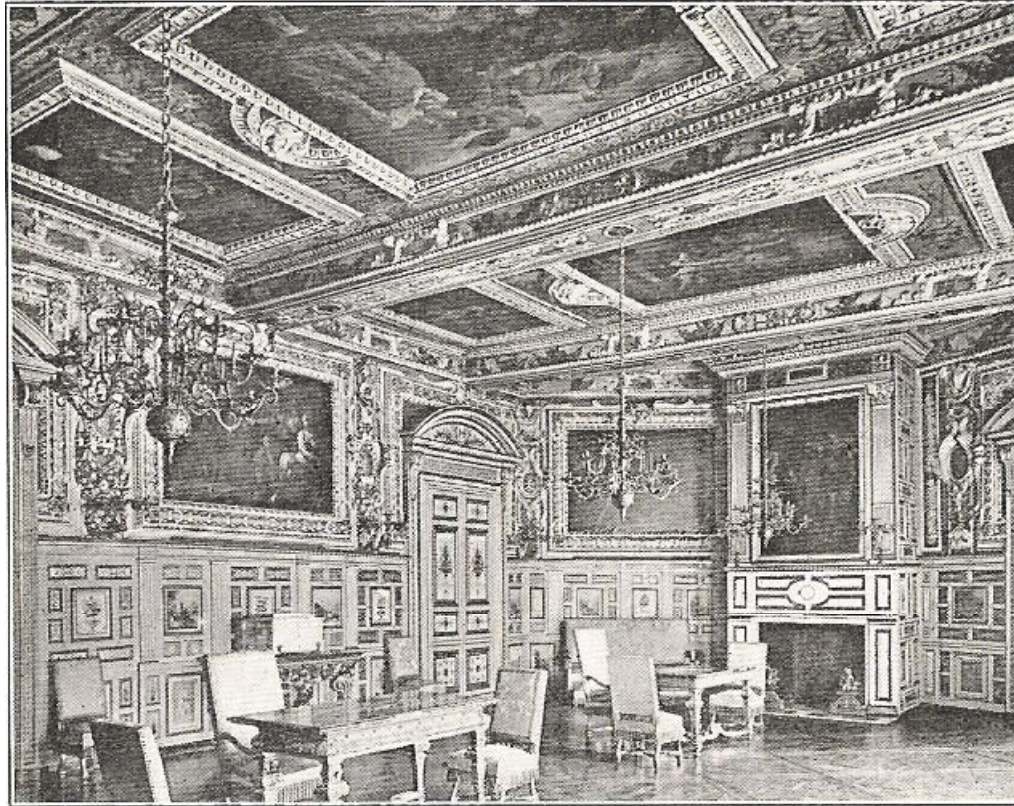
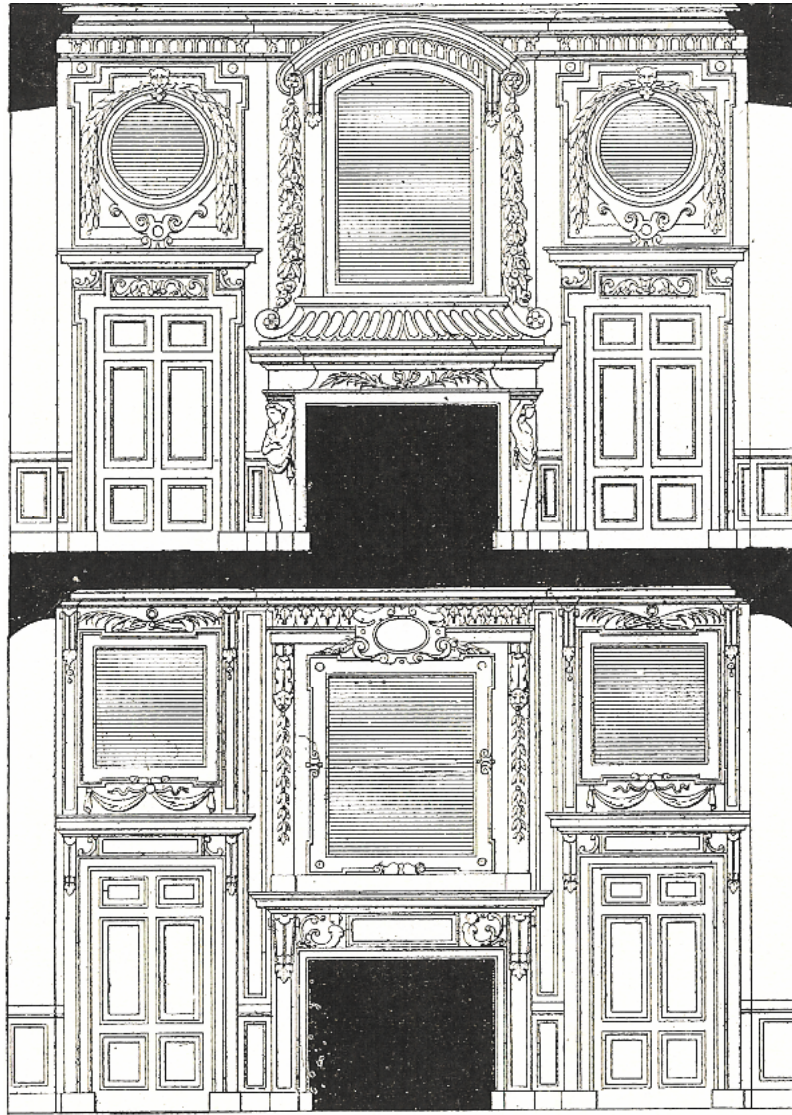


Fig. 16. — Salon de Louis XIII, au palais de Fontainebleau.



Château de Pont-sur-Seine (Aube). par Lemuet (1630).

Louis XIV Style (1643-1715)



Louis XIV

Louvre, Galerie d'Apollon, Louis Le Vau and Charles LeBrun, 1662



Louis XIV

Versailles, Galerie des Glaces, 1685

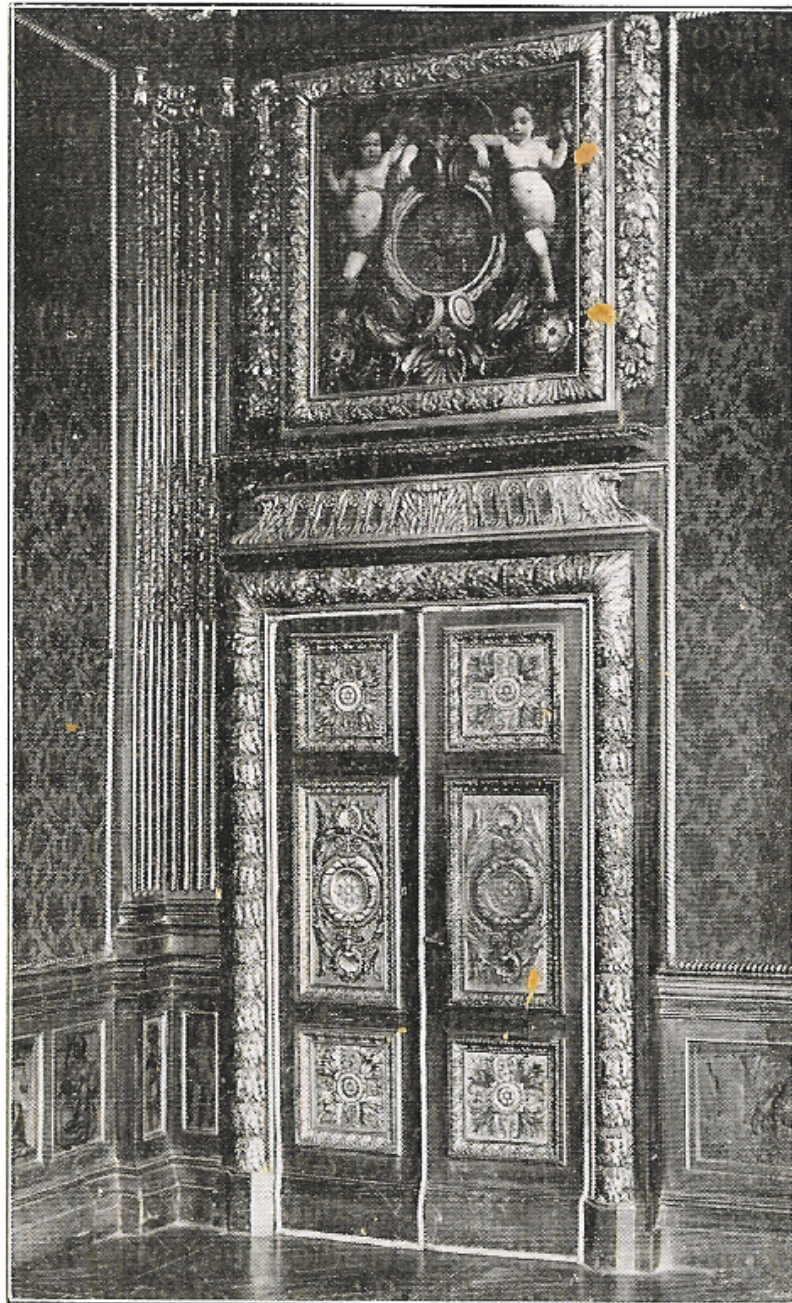
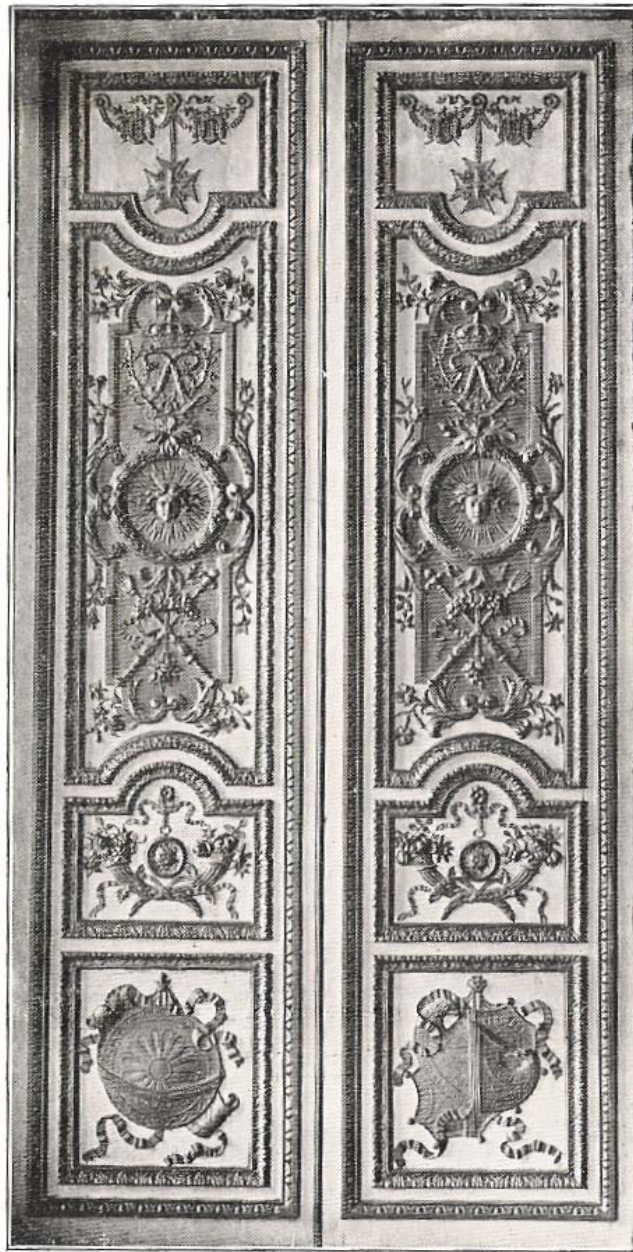


Photo N. D.

Palais de justice de Rennes.

Louis XIV



Portes du salon de Vénus, par Philippe Caffieri (1680).
Château de Versailles.

Louis XIV

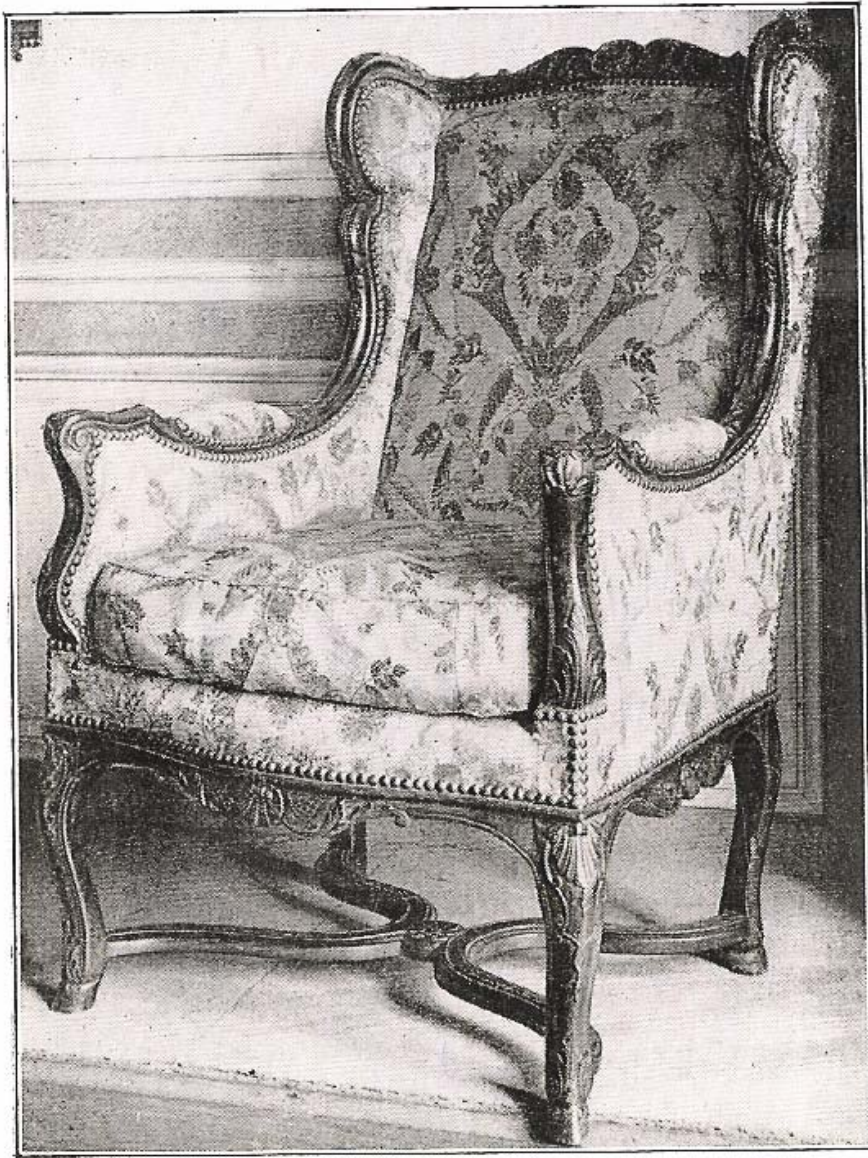
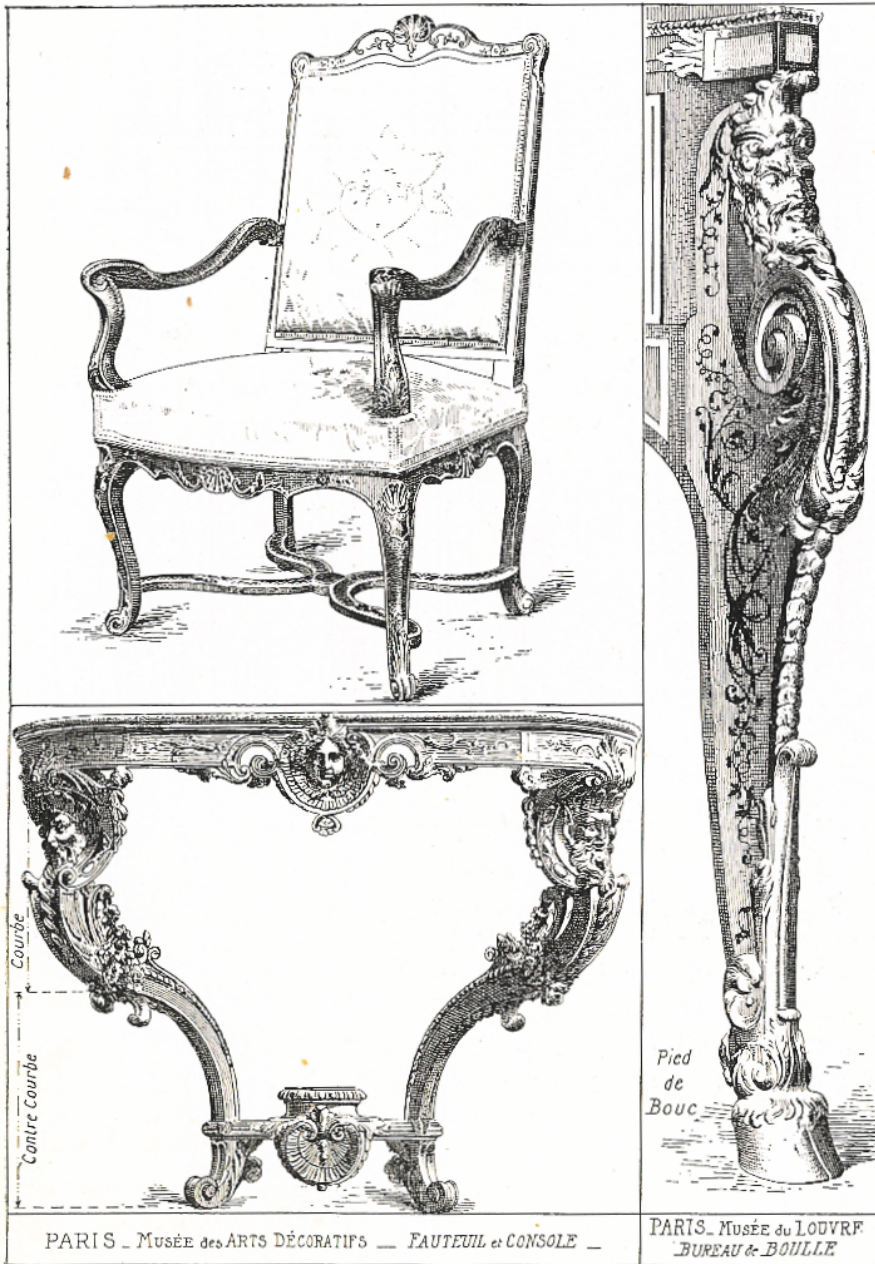


Photo N. D.

*Fig. 20. — Fauteuil dit Confessionnal.
Musée des Arts décoratifs, à Paris.*

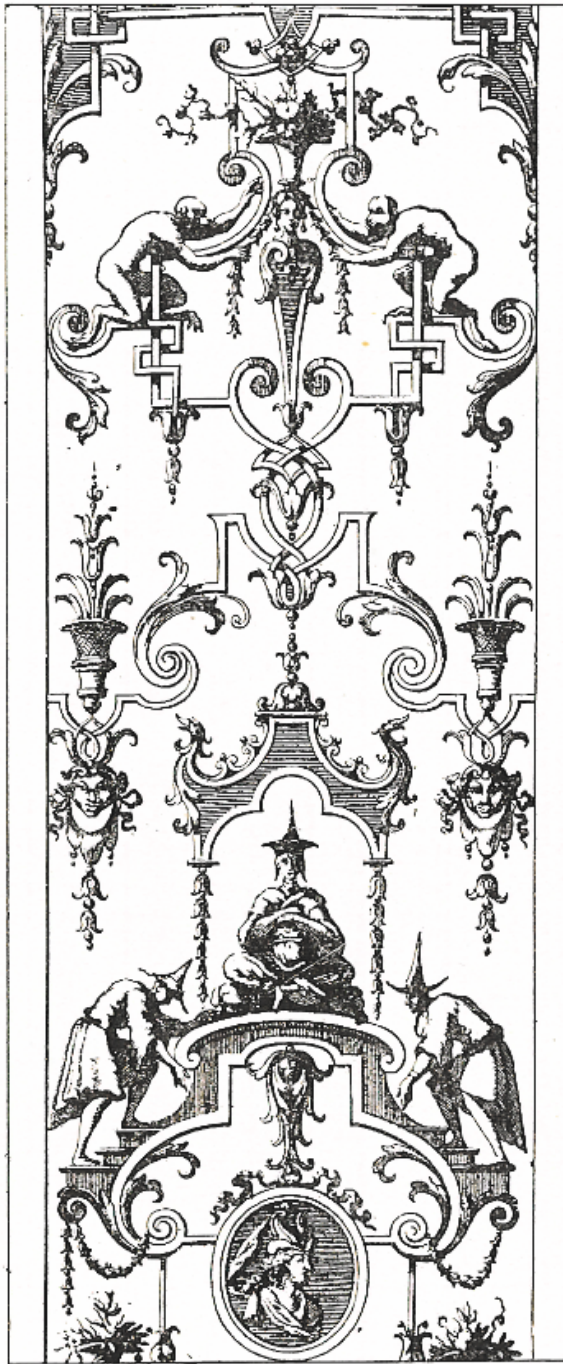
Louis XIV



PARIS - MUSÉE des ARTS DÉCORATIFS — FAUTEUIL et CONSOLE —

PARIS - MUSÉE du LOUVRE
BUREAU & BOULLE

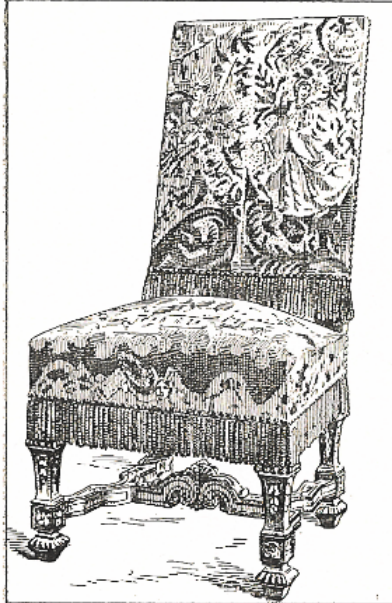
Louis XIV



Louis XIV, Jaques
Berain Wall Panel for
Palace of Versailles

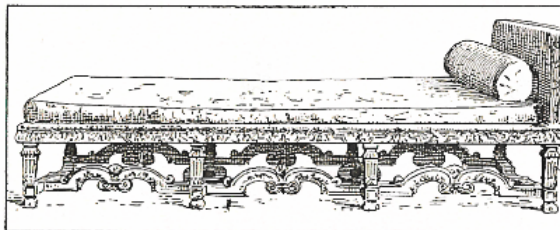
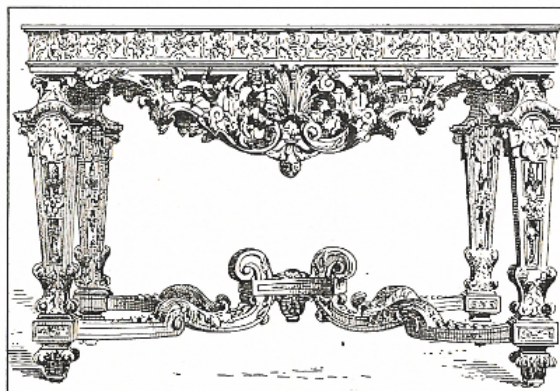
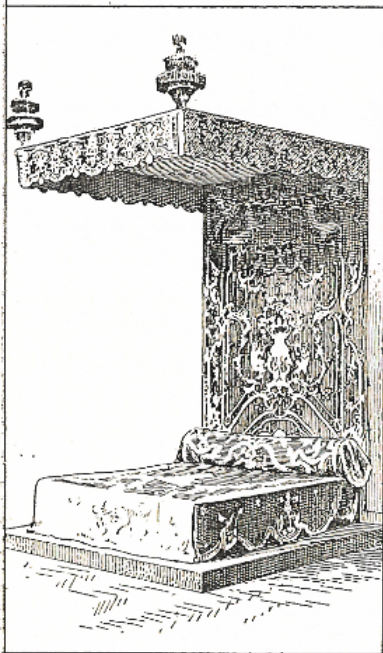
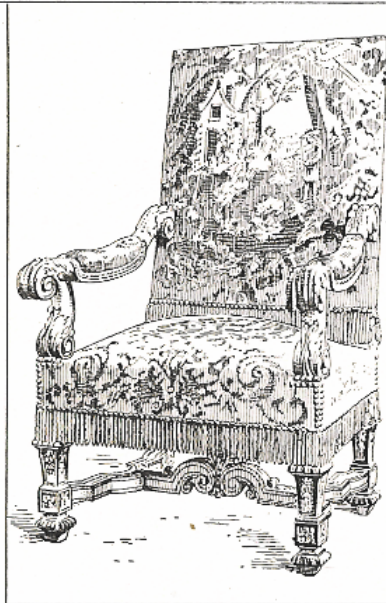
Louis XIV

Panneau de Bérain.



PALAIS
DE
FONTAINEBLEAU

CHAISE
ET
FAUTEUIL



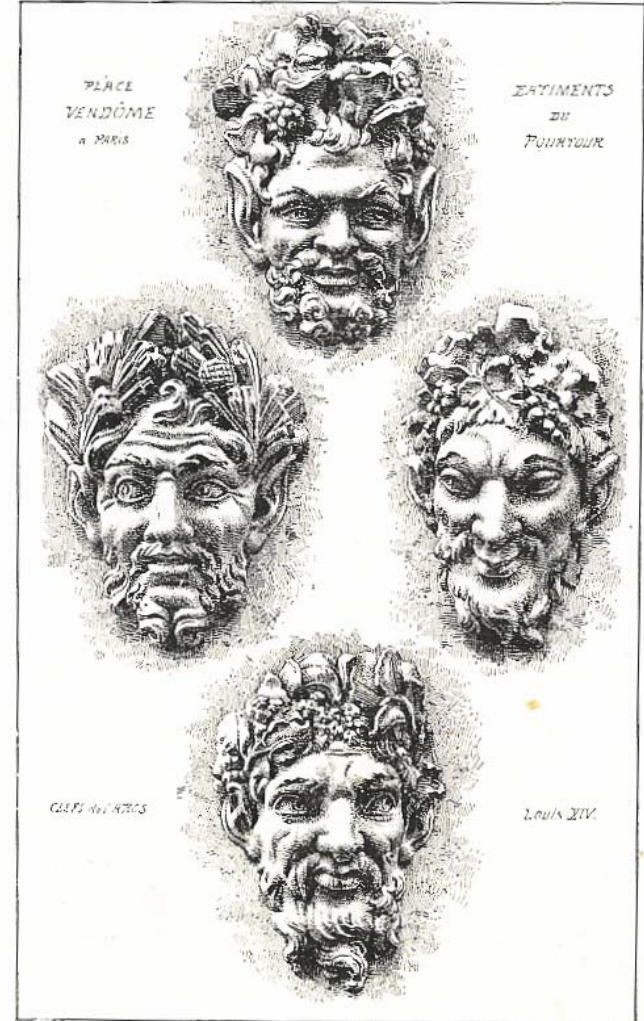
PARIS — MUSÉE DES ARTS DÉCORATIFS — GRAND LIT, LIT de REPOS et TABLE.

Louis XIV



Fauteuils, with *Les Os de Mouton* stretchers

Louis XIV



Mascarons ornant les clefs d'arcs.
Place Vendôme, à Paris.
(Extrait de RAGUENET, Matériaux et documents d'architecture.)

Louis XIV



Commode, 1709, André-Charles Boulle, Cabinet Maker

Louis XIV

Régence Style (1715-1723)

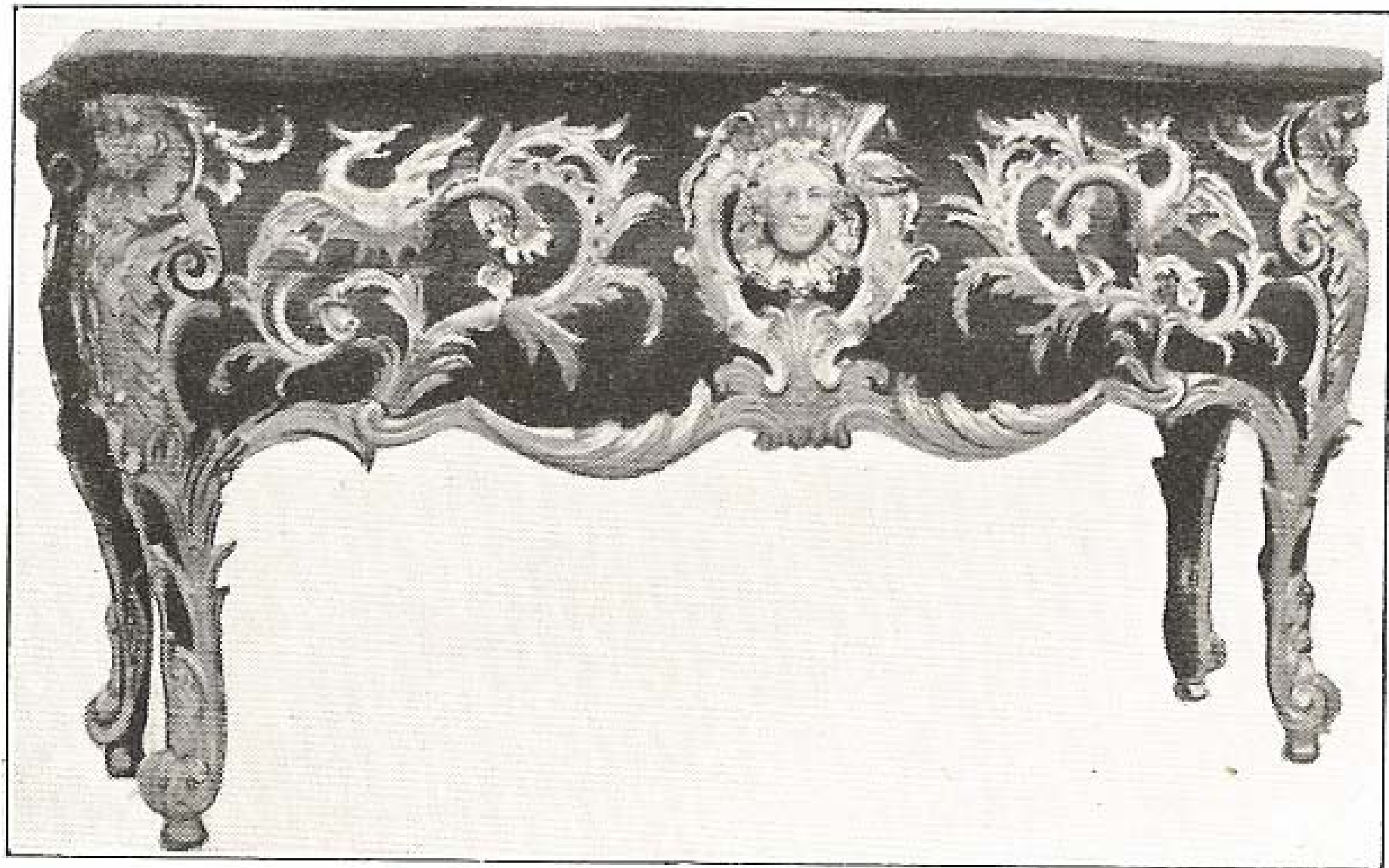


Fig. 6. — Commode, par Cressent.
Collection Wallace, à Londres.

Régence

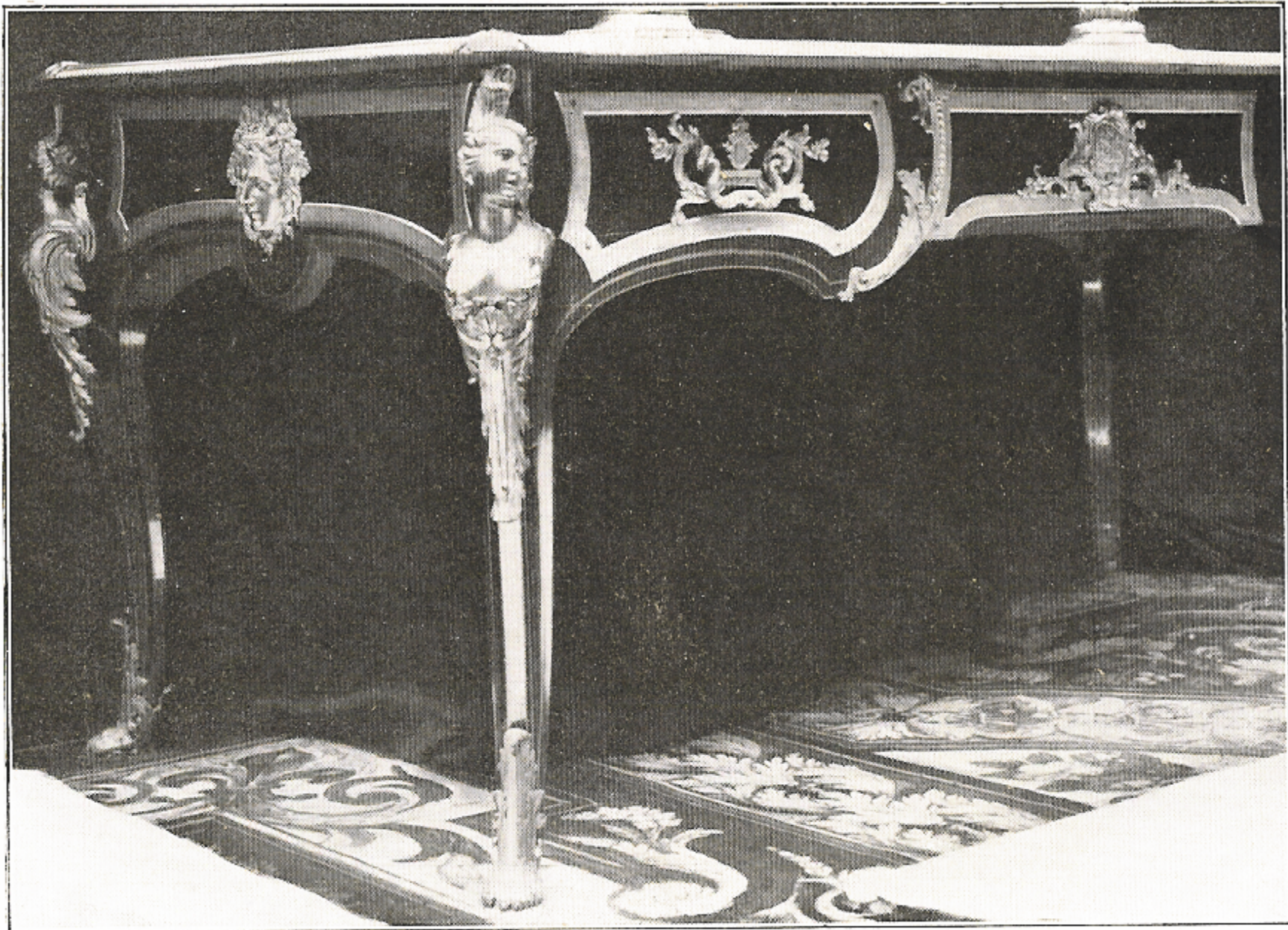


Table-bureau, par Charles Cressent.
Musée du Louvre.

Régence



Fig. 4. — Encadrement d'un panneau.
Galerie dorée de la Banque de France, à Paris.



*Fig. 5. — Chimère et espagnolette, panneau.
Musée des Arts décoratifs, à Paris.*



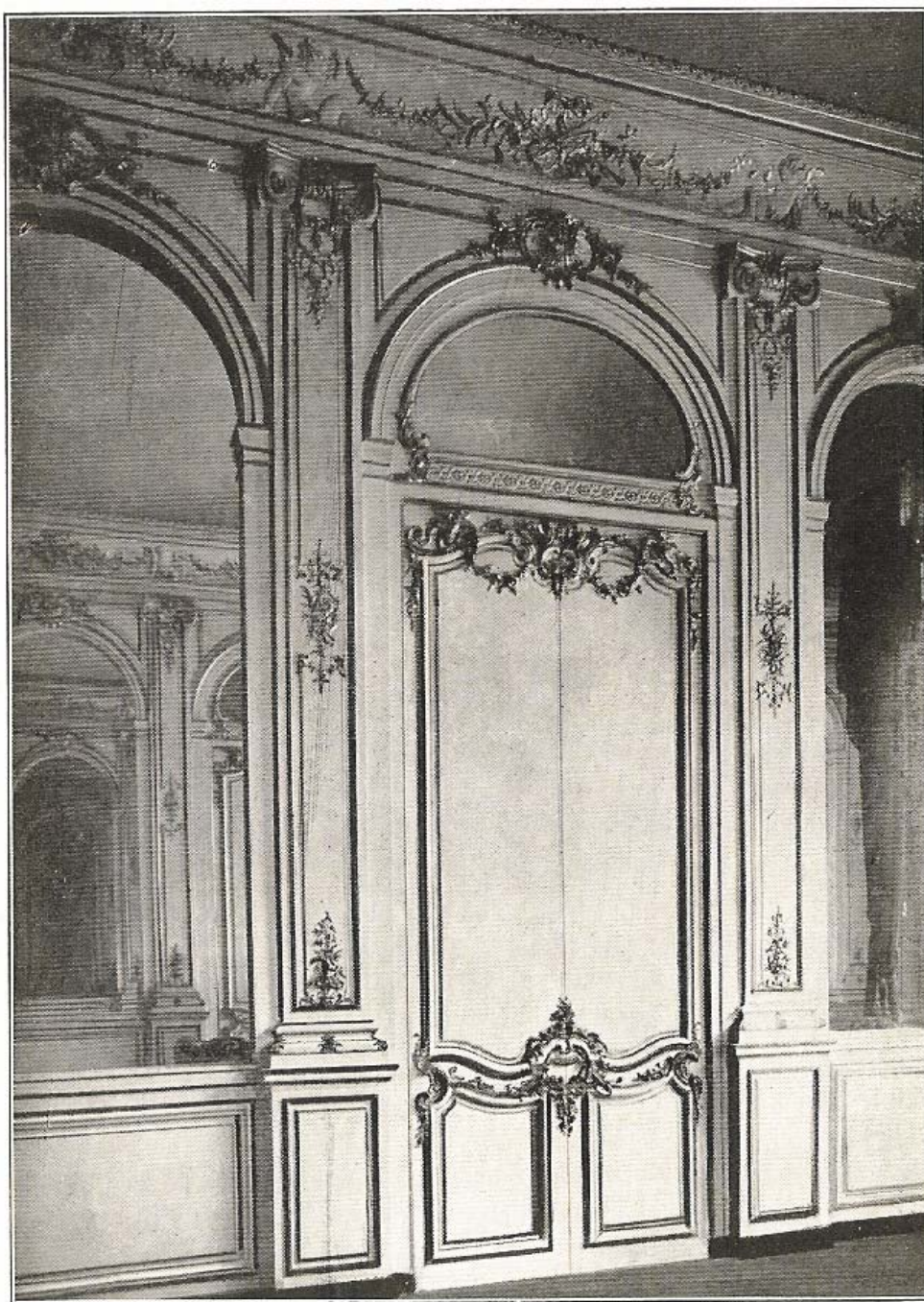
Galerie dorée de la Banque de France, à Paris

Régence



Fig 7. — Fauteuil.
Musée des Arts décoratifs, à Paris.

Régence



Hôtel d'Évreux, place Vendôme, n° 19, à Paris.

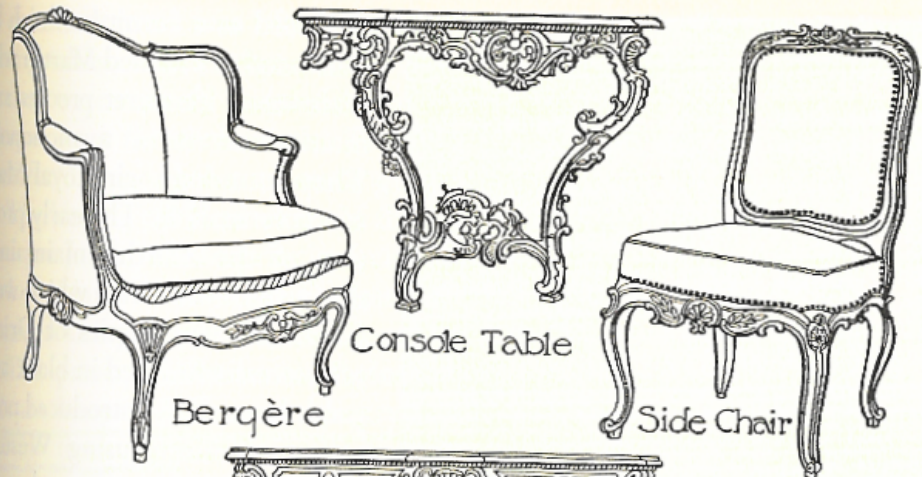
Régence

Louis XV Style (1715-1774)

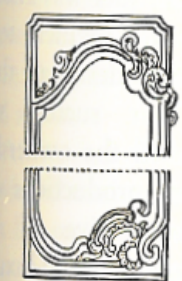


Bergere in Gondola, Claude-Louis Burgat, c. 1760-1770

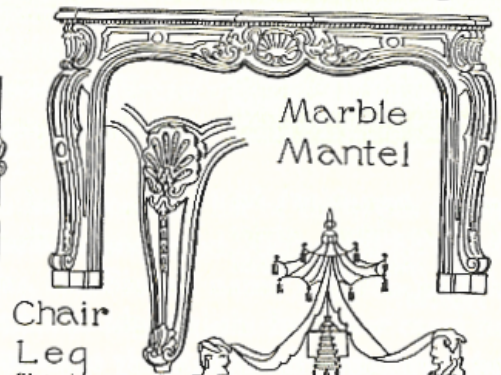
Louis XV



Bergère
Console Table
Side Chair

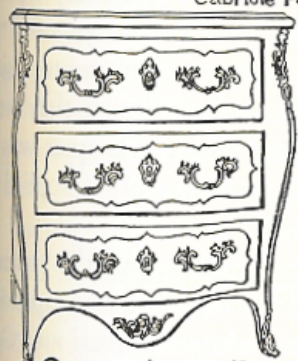


Wood Panel

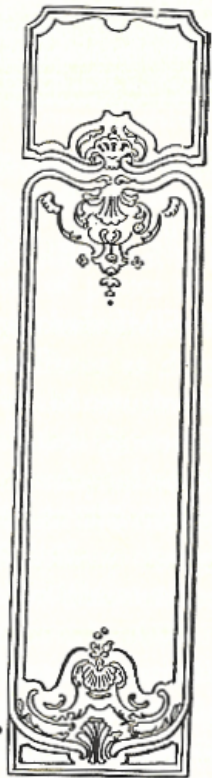


Marble Mantel

Chair Leg
Showing
Cabriole Form



Commode with Ormolu Mounts • Painting showing 'Singerie' and 'Chinoiserie' Motifs



Wood Panel

Louis XV



Plat, Joseph Baumhaur, c. 1761

Louis XV



Commode, Martin Carlin, c. 1770

Louis XV



Chinoiserie and Singerie

Louis XV



Francois Boucher, The Rape of Europa, 1734

Louis XV



Fig. 11. — Cartouche.
Chambre de la Reine, au château de Versailles.

Louis XV



Fig. 32. — Biscuit de Sèvres, par Falconet,
d'après Boucher.

Louis XV



Francois Boucher, Morning Coffee, 1739

Louis XV



Jean-Antoine Watteau, Gersaint's Shopsign, 1720

Louis XV



Jean-Antoine Watteau, The Embarkation to Cythera (a "fête galante"), 1717 **Louis XV**



Jean-Antoine Watteau, *The Embarkation to Cythera* (detail), 1717

Louis XV



Jean-Honore
Fragonard, The
Reader, 1770-1772

Louis XV



Fig. 25. — Bergère.
Musée des Arts décoratifs, à Paris.



Fig. 26. — Bergère à confessionnal.
Musée des Arts décoratifs, à Paris.



Salon ovale de l'hôtel Soubise, à Paris.

Photo Girardon

Louis XV

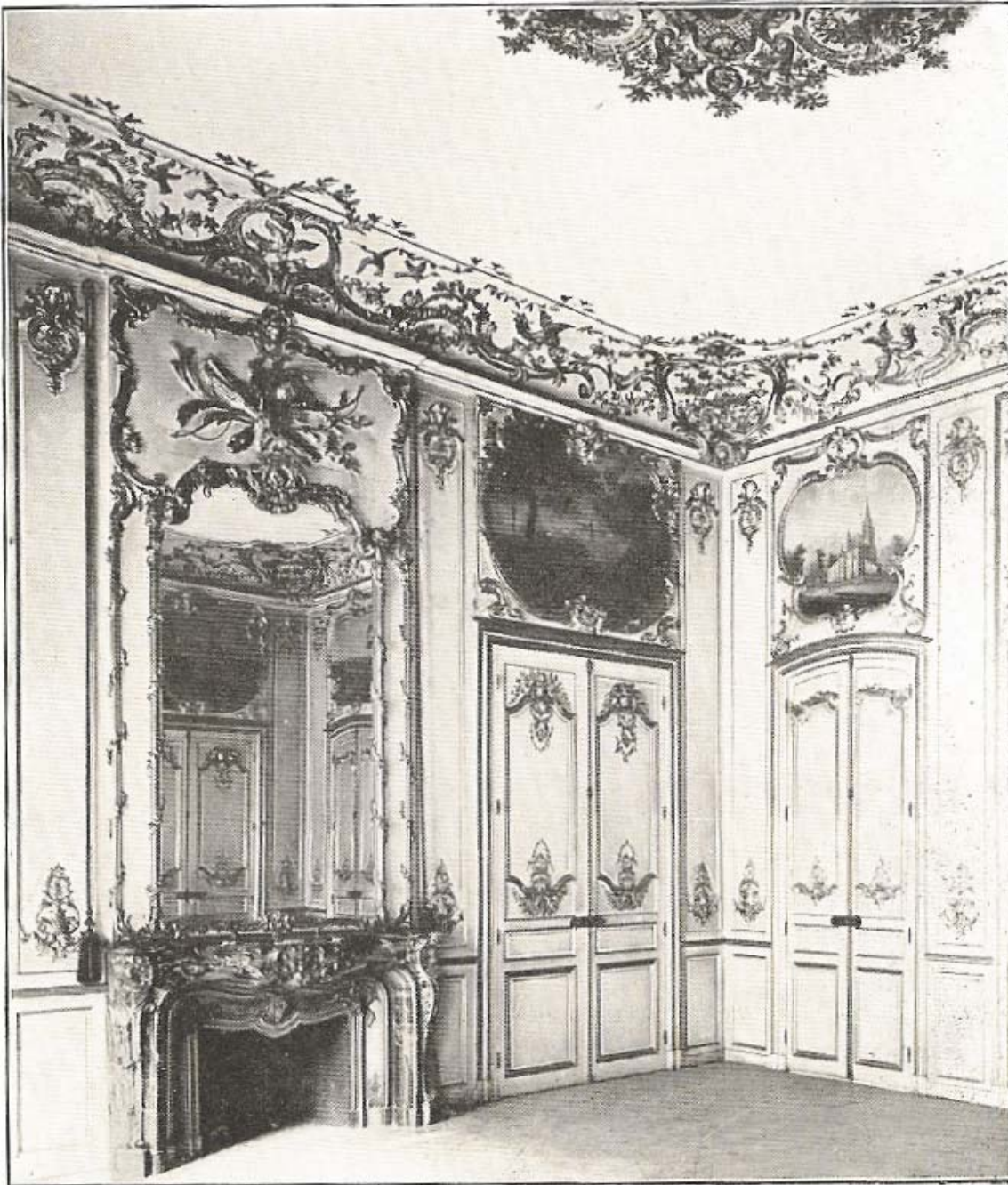


Fig. 20. — Salon de l'archevêché de Bordeaux

Photo Arch. Ph.

Louis XV

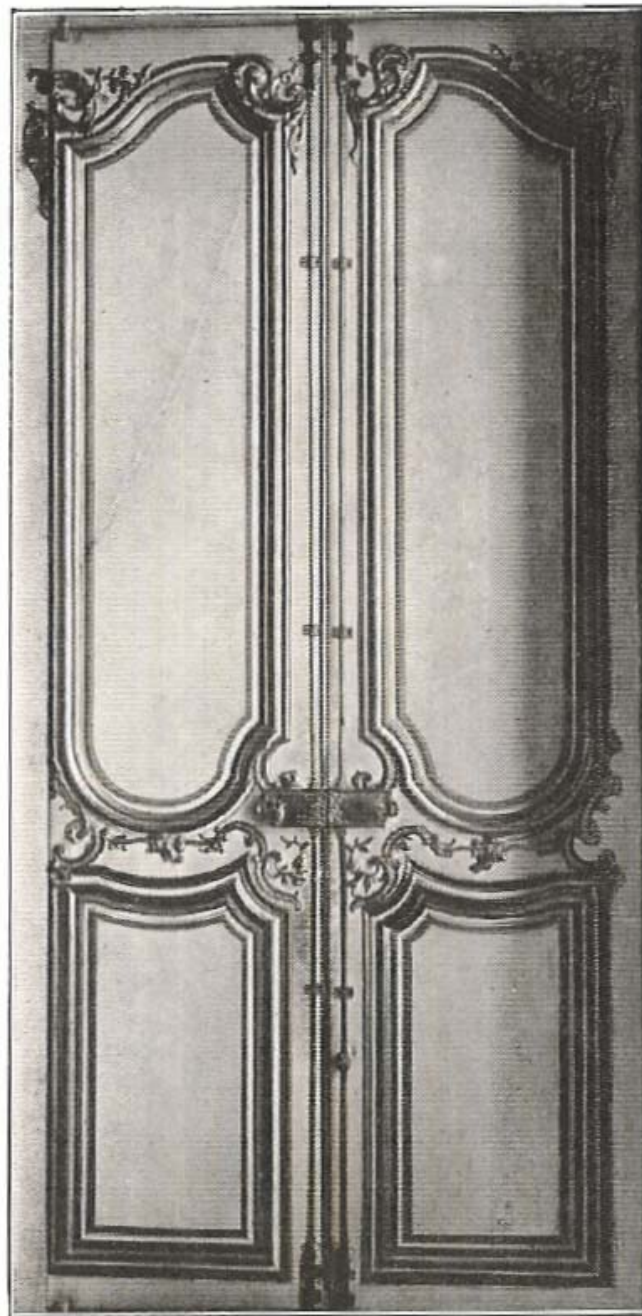


Photo Giraudon

Fig. 21. — Porte de l'hôtel de Rohan, à Paris.

Louis XV

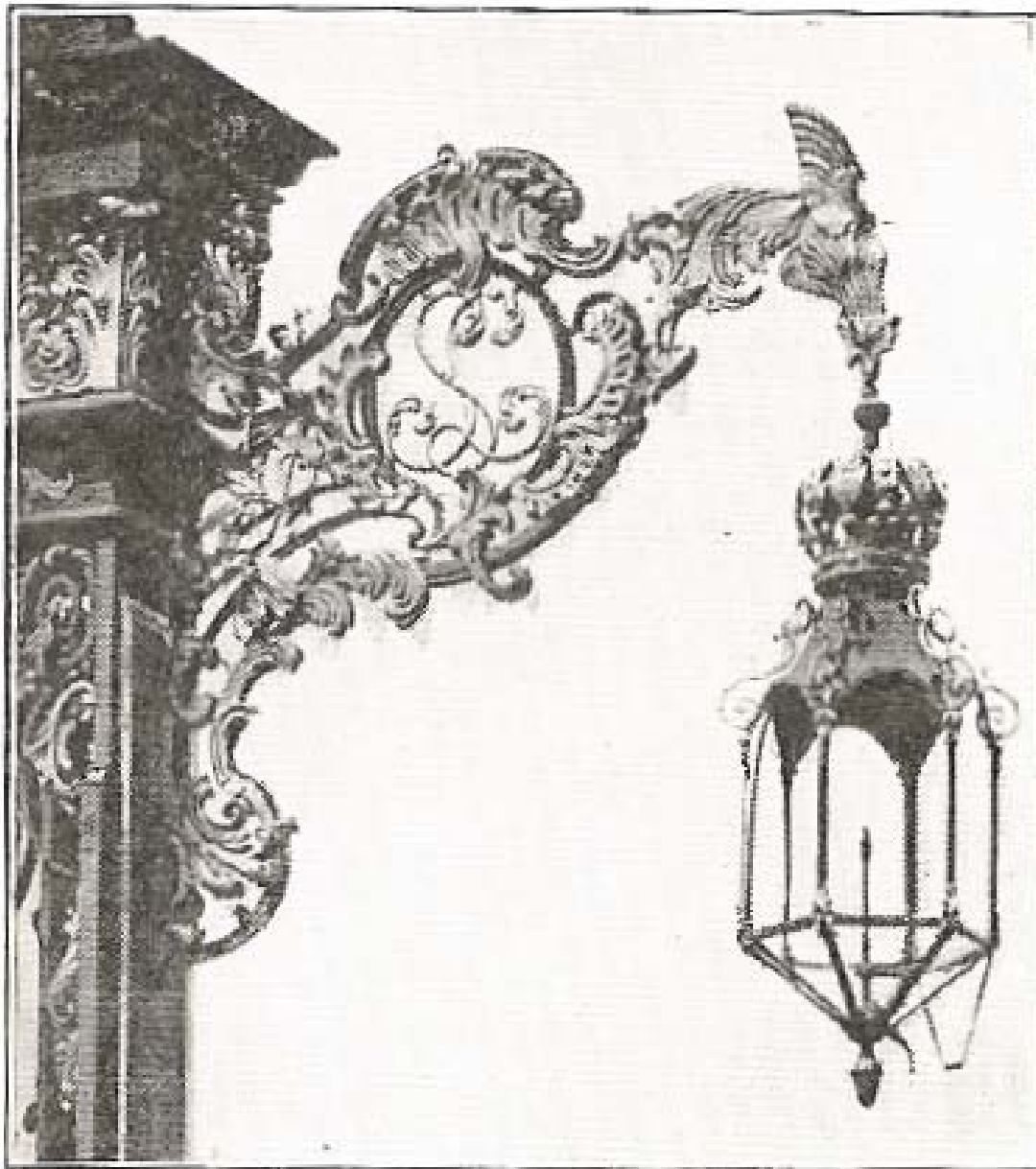


Fig. 31. — Lanterne de la place Stanislas
à Nancy.

Louis XV

Louis XVI Style (1774-1792)



Photo Giraudon.

Fig. 2. — Portique de la cour de l'École militaire, à Paris.

Louis XVI



Fig. 1. — Console du Petit Trianon.

Louis XVI



Hotel Baudard de Saint-James, Francois-Joseph Belanger, 1775-1780

Louis XVI

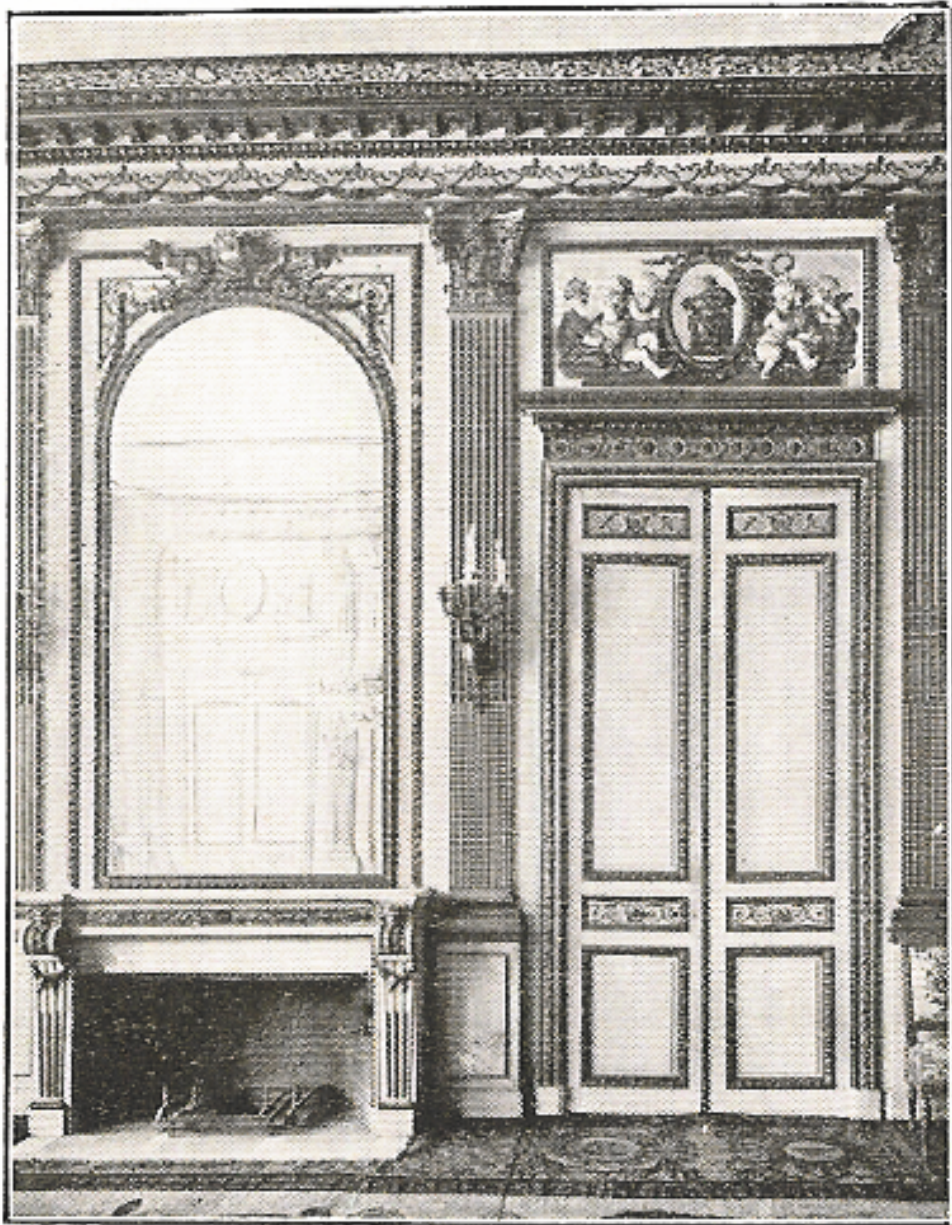


Fig. 18.
Décoration inspirée de l'art antique.

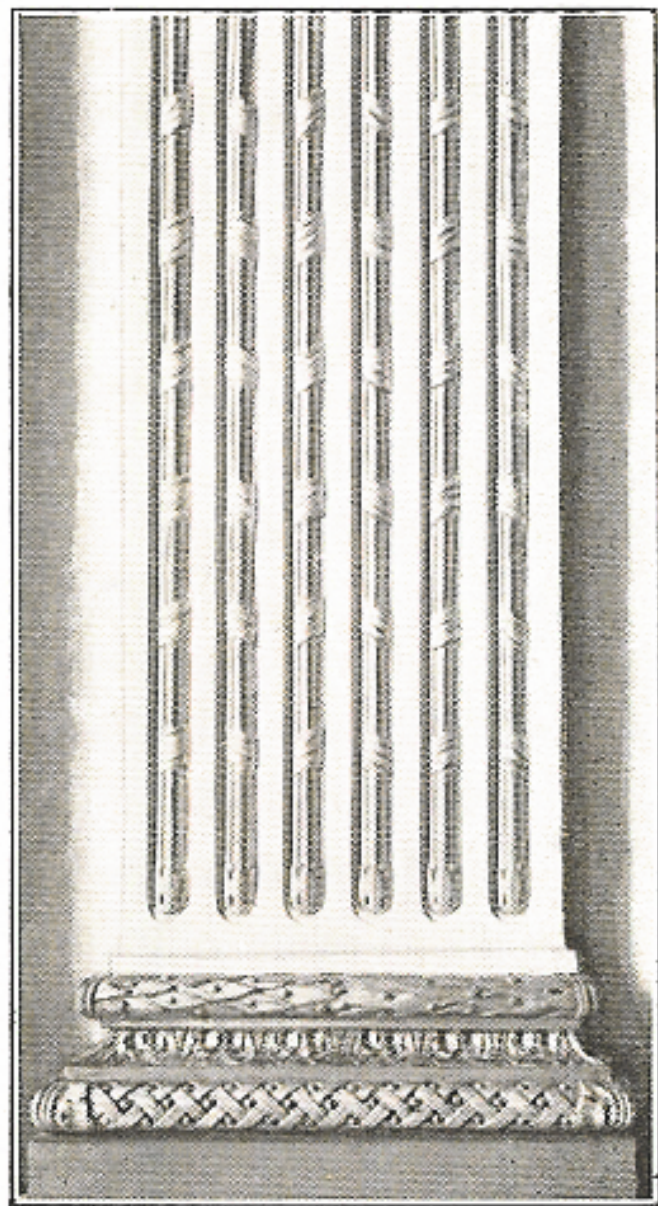
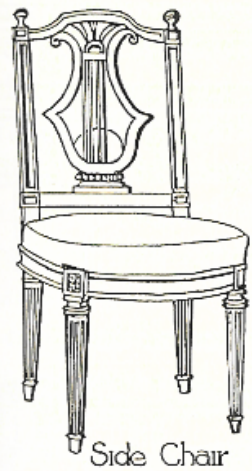
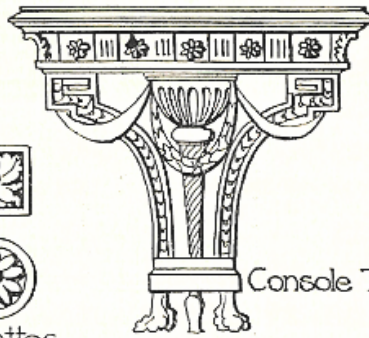


Fig. 19. — Ensemble et base d'un pilastre de l'hôtel de Rochecouart, à Paris.

Louis XVI



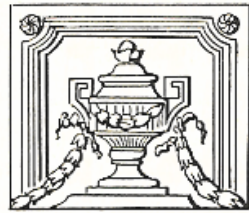
Side Chair



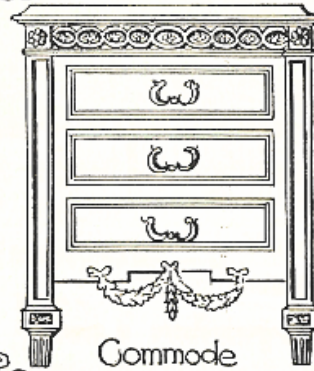
Console Table



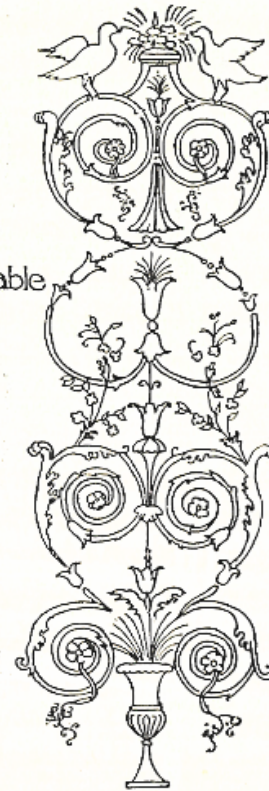
Rosettes



Urn Motif



Commode



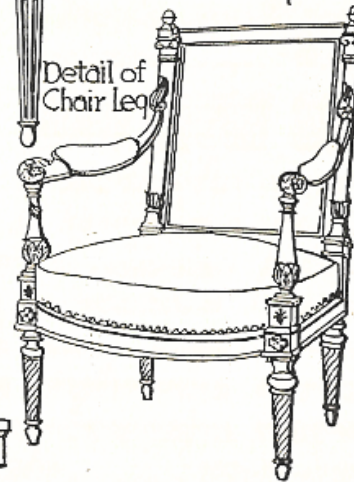
Arabesque



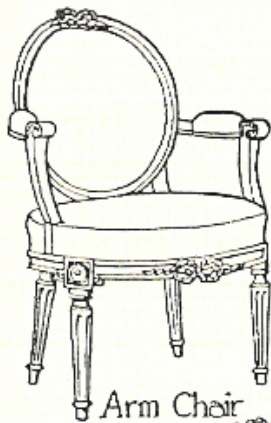
Over-door Motif - Medallion, garland, ribbon



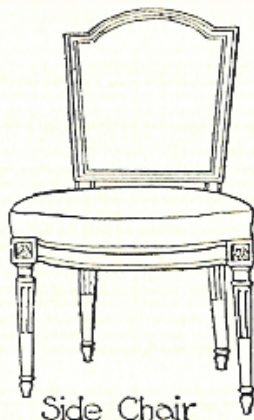
Detail of Chair Leg



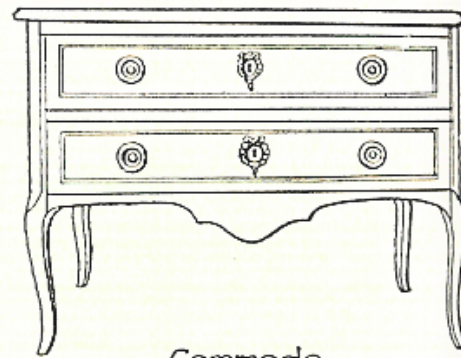
Arm Chair



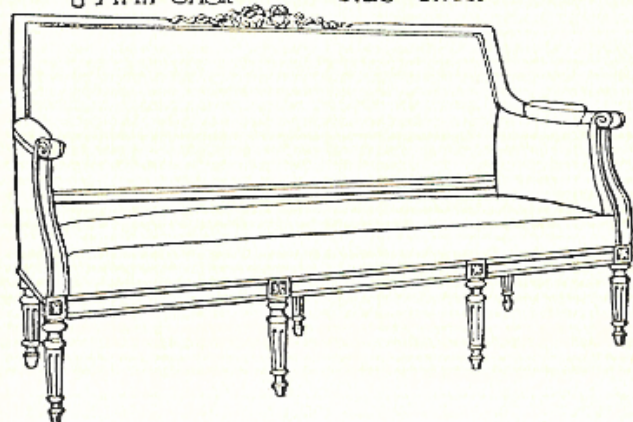
Arm Chair



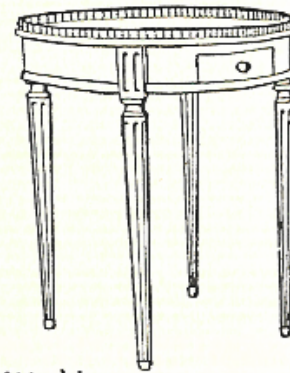
Side Chair



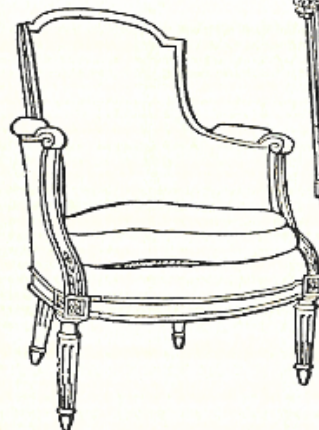
Commode



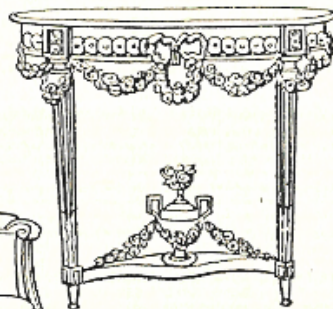
Sofa or Canapé



Bouillotte



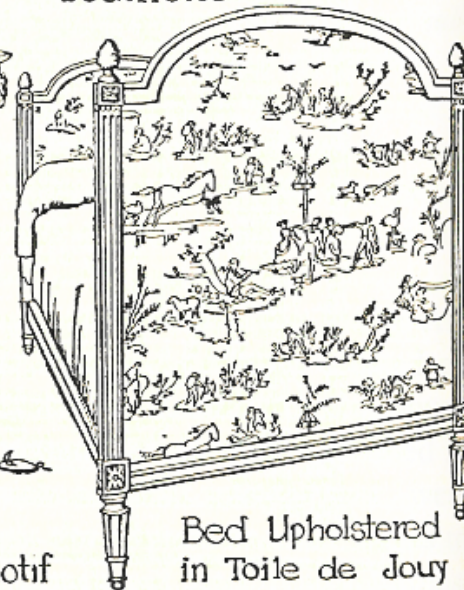
Bergère



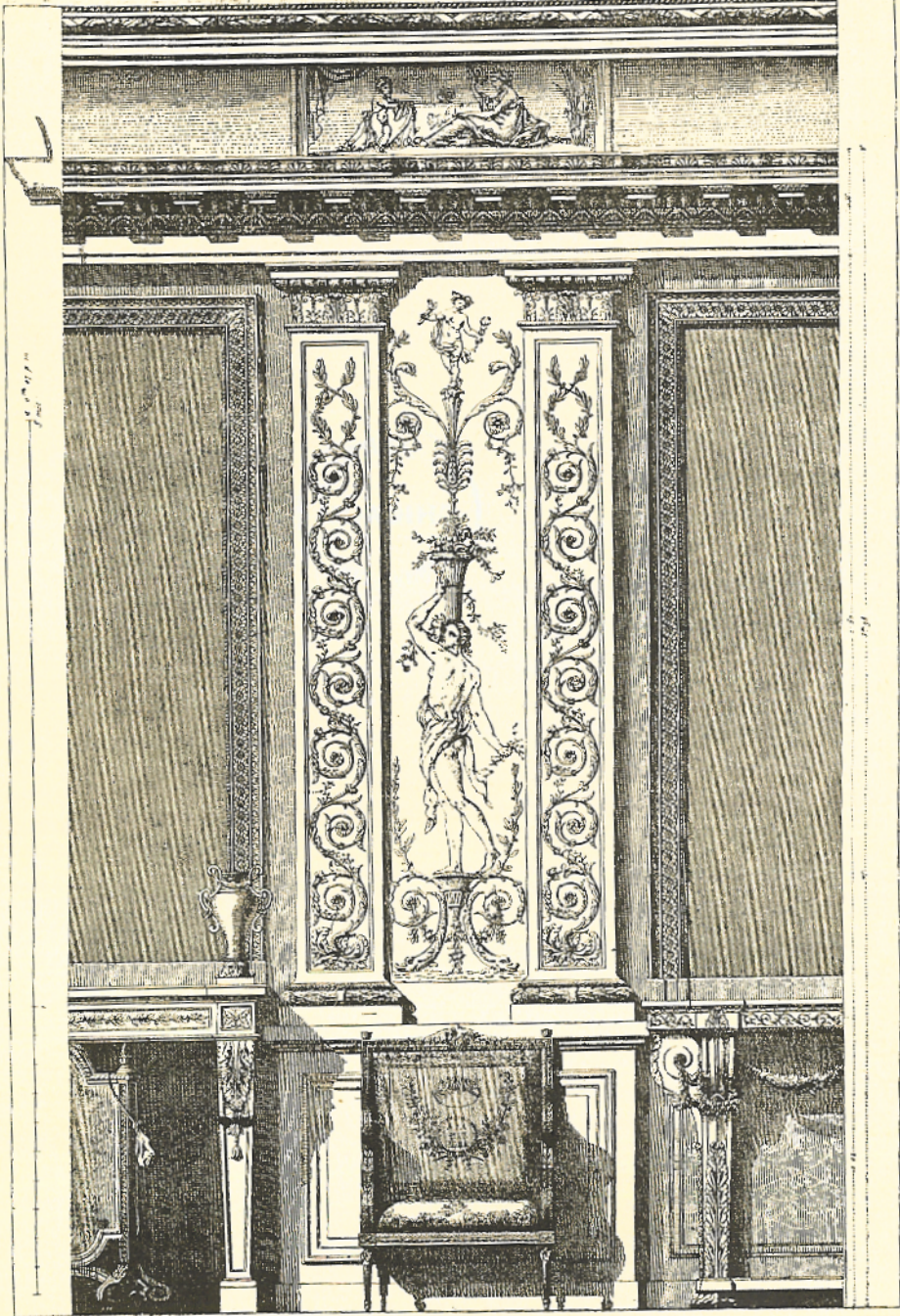
Console



Bow and Quiver Motif



Bed Upholstered
in Toile de Jouy



PART OF A SALON.

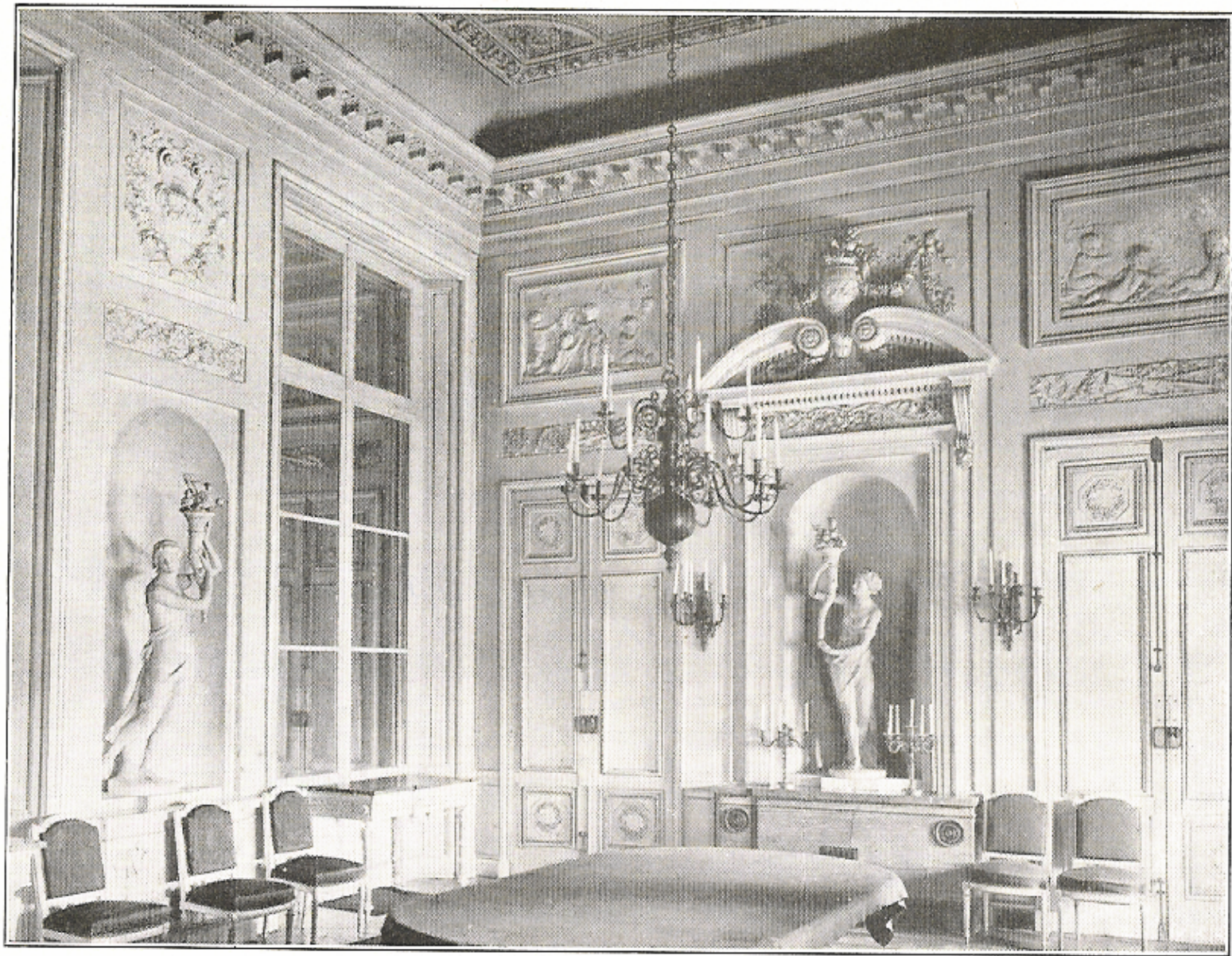
Decorated and Furnished in the Louis XVI. Style.

Louis XVI



*Fig. 20. — Décoration Louis XVI exécutée sous Louis XV.
Salon du Petit Trianon.*

Louis XVI



Décoration affranchie de l'art antique.
Salle à manger de l'hôtel Crillon, à Paris,
Restituée actuellement dans l'hôtel de La Tour d'Auvergne, à Paris.

Louis XVI



Fig. 23. — Salle à manger de l'hôtel du Châtelet, à Paris.

Louis XVI

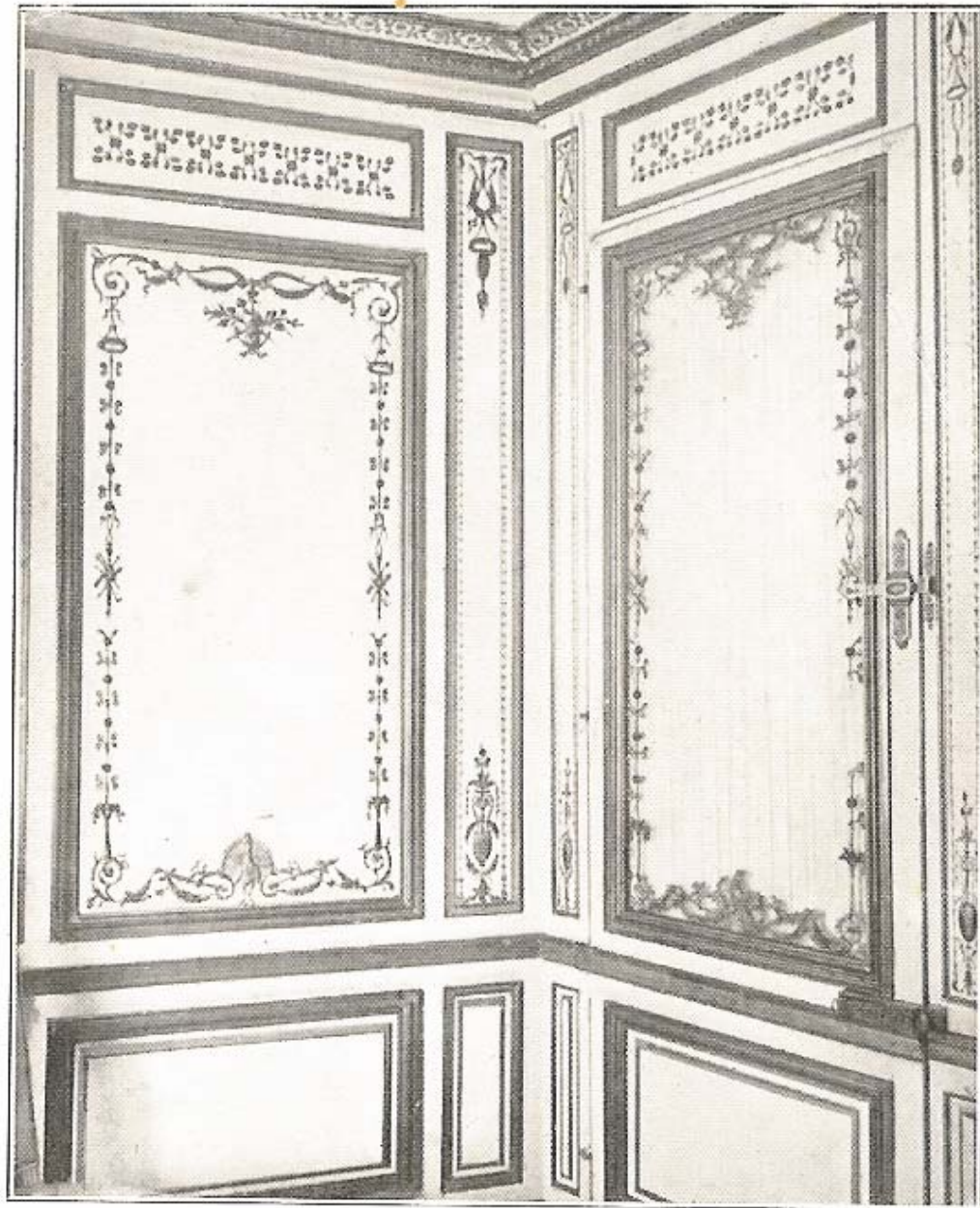


Fig. 22. — Salon de la Méridienne.
Château de Versailles.

Louis XVI

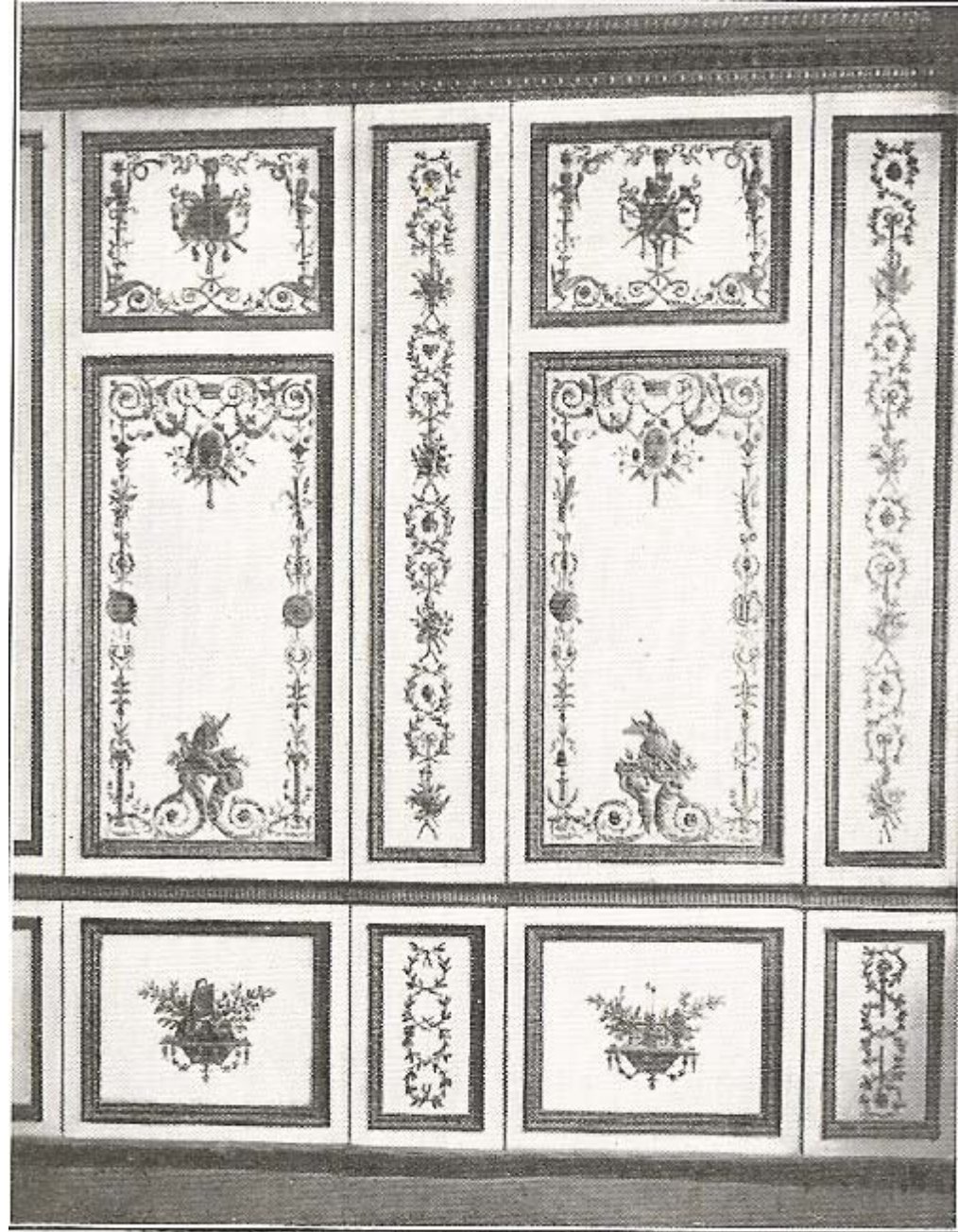


Fig. 21. — Décoration Louis XVI exécutée sous Louis XVI.
Garde-robe de Louis XVI, à Versailles.

Louis XVI



Fig. 28. — Fauteuil « à chapeau »,
Musée des Arts décoratifs, à Paris.



Fig. 29. — Bergère.
Musée des Arts décoratifs, à Paris.



Louis XVI *Chaise*, Georges Jacob, c. 1780

Louis XVI



Louis XVI *Commode* for Marie Antoinette's Chateau St. Cloud,
Jean-Henri Riesener, 1783-1787



Louis XVI Drop Front Cabinet, Adam Weisweiler, c. 1790

Louis XVI



Louis XVI *Bonheur du Jour*, Martin Carlin, c. 1775

Louis XVI



Fig. 30. — Bonheur-du-jour.

Louis XVI



Fig. 31. — Buffet-servante, par Riesener.

Louis XVI



Jaques-Louis David, Death of Socrates, 1787

Louis XVI



Louis XVI

Jean-Antoine
Houdon,
George
Washington,
1785-1791





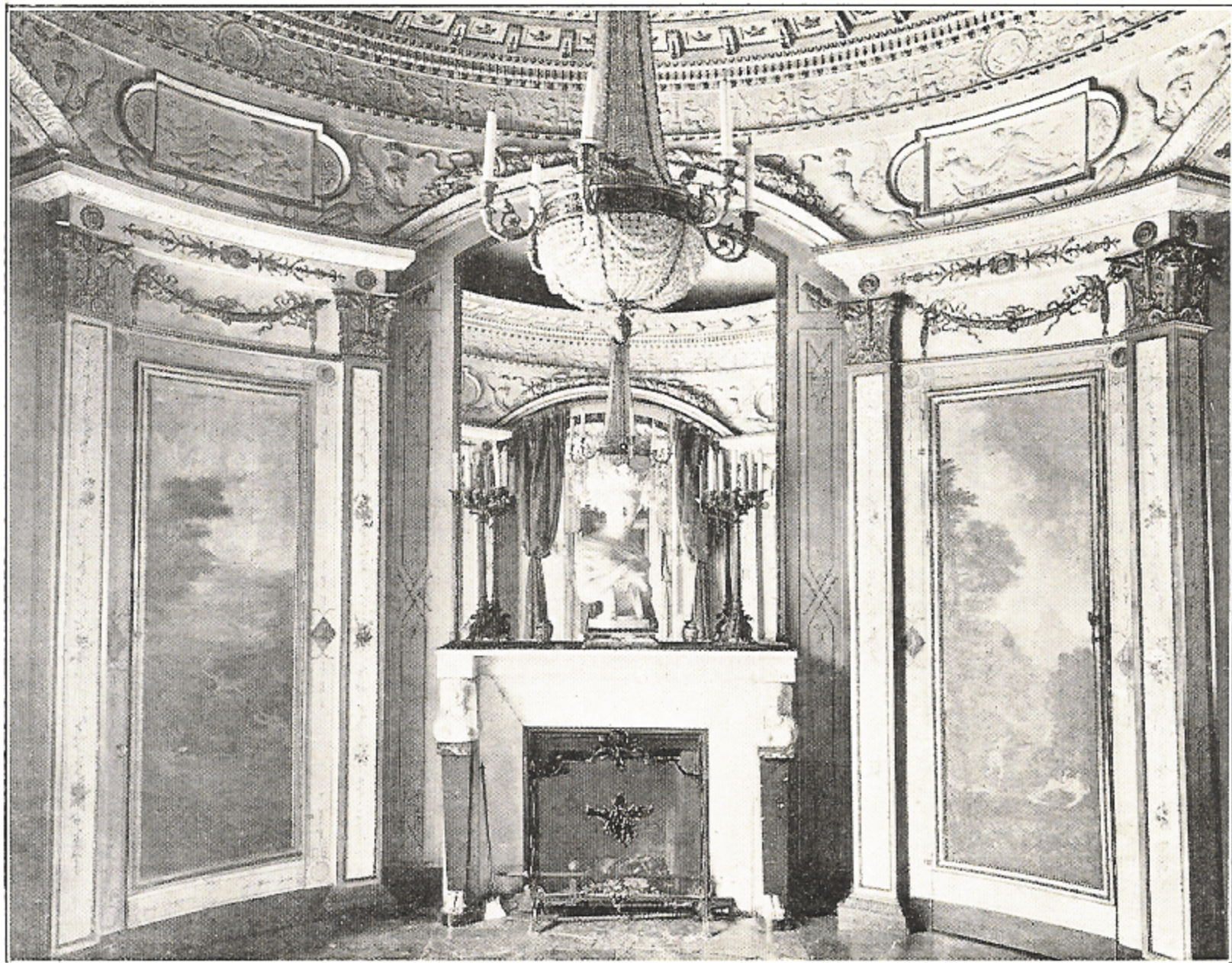
Jean-Antoine
Houdon,
Voltaire, 1781

Louis XVI

Directoire Style (1795-1799)



Fig. 7. — Panneau de l'hôtel Gouthière, à Paris.



Boudoir de l'ancien hôtel d'Estrades, à Versailles.

Directoire



Fig. 8. — Détail de la frise du boudoir de l'ancien hôtel d'Estrades, à Versailles.

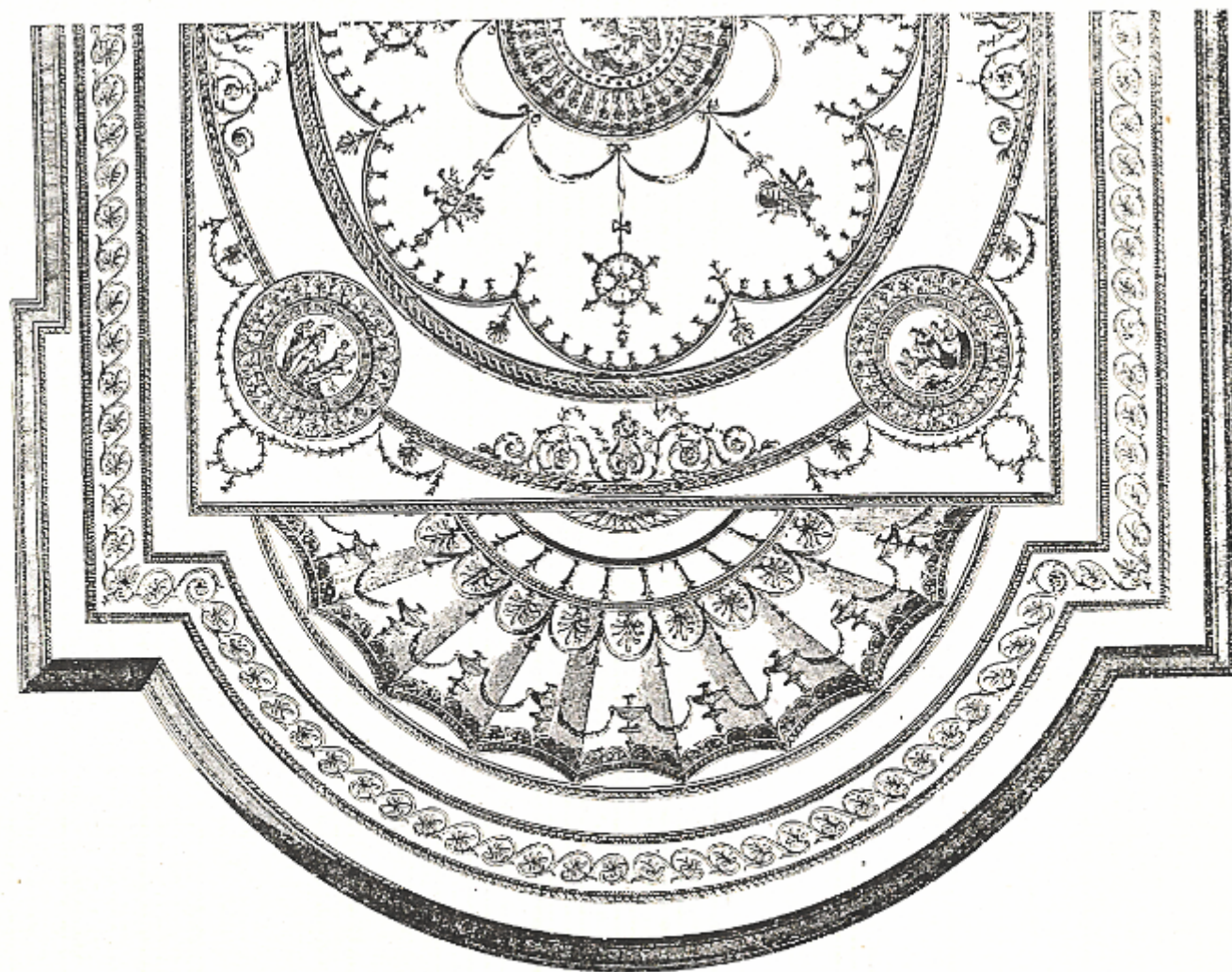


Fig. 12. — Plafond, par R. et J. Adam (1777).





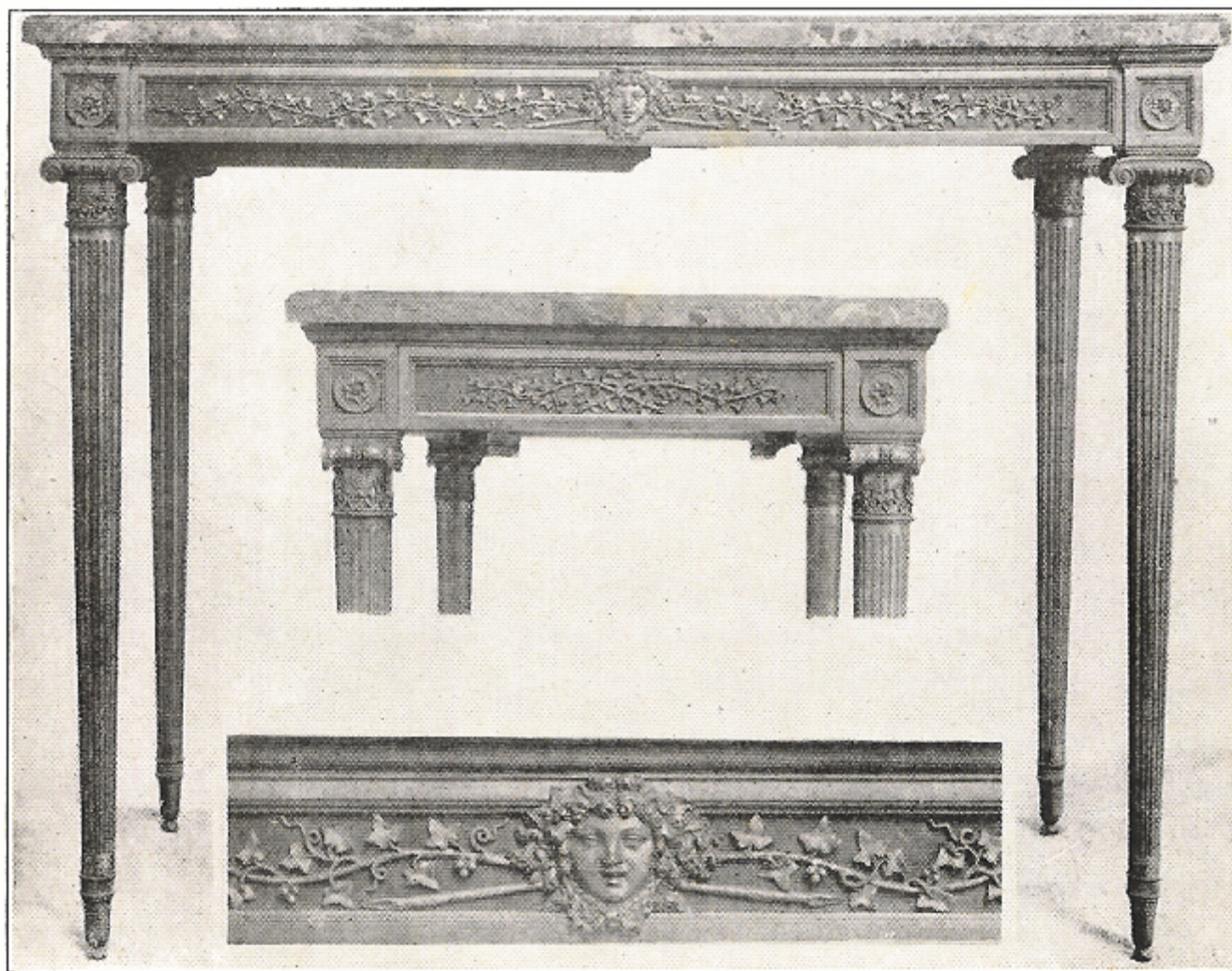


Fig. 17. — Table Directoire.
Palais des Beaux-Arts de la ville de Paris.



Fig. 15. — L'auteuil Directoire.
Musée de Tours

Directoire



Fig. 16 — Bergère Directoire.

Directoire



*Directoire chair showing star and
Greek motifs in its design.*

Directoire

Empire Style (1799-1814)

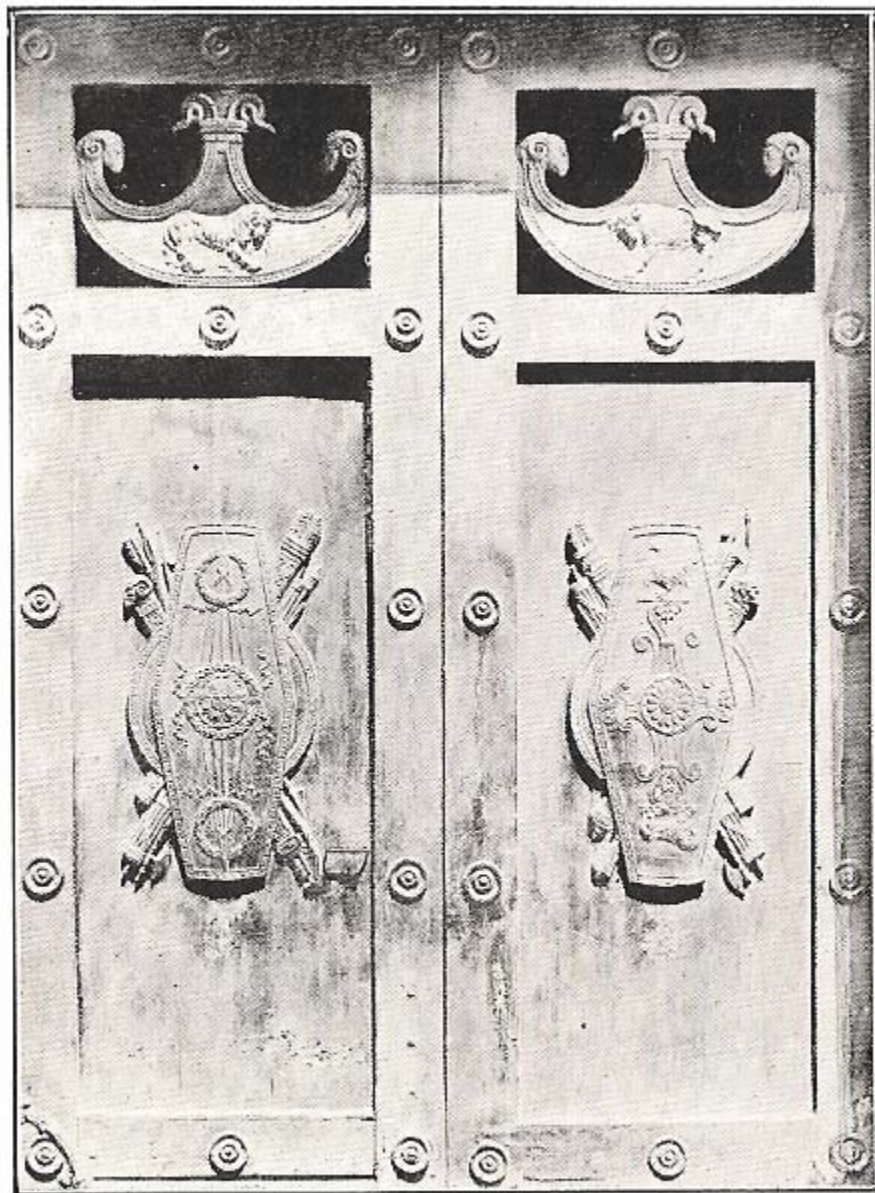


Fig. 21. — Porte de l'ancien hôtel Thélusson, à Paris.

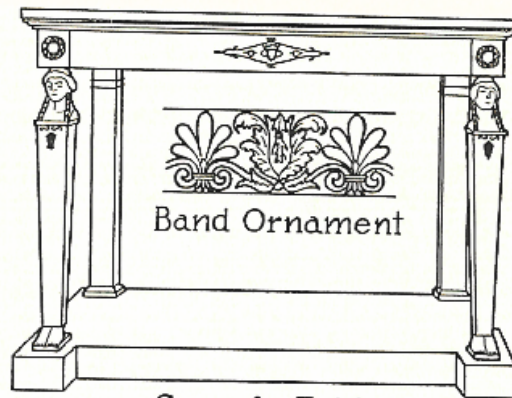
Empire



Military tent bedroom built by Percier and Fontaine for Empress Josephine's use in Malmaison. The panels are draped in red silk. The bed drapery is lined with ermine.

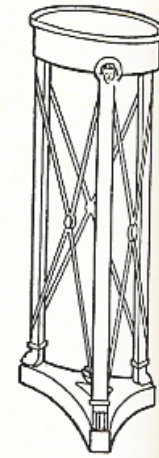


Table Support

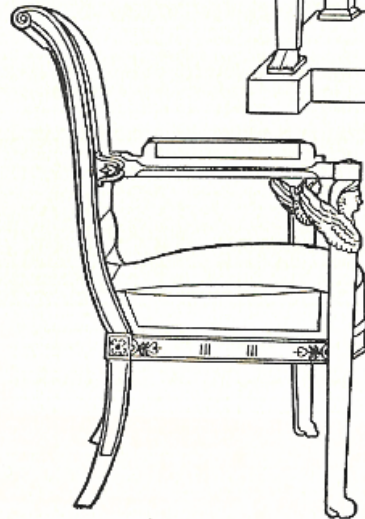


Band Ornament

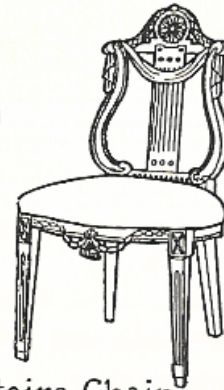
Console Table



Tripod Table



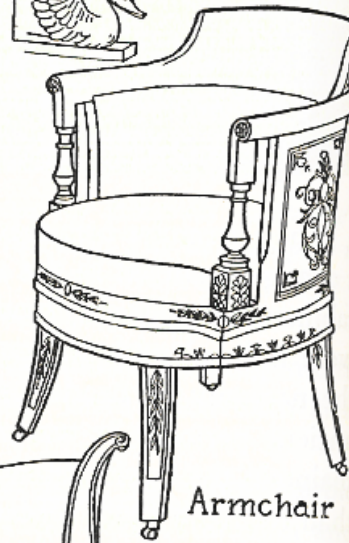
Armchair



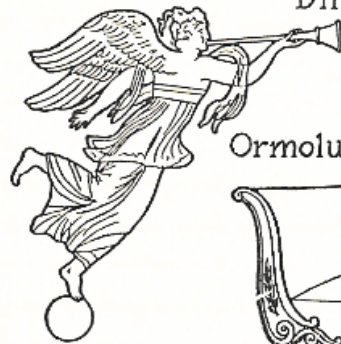
Directoire Chair



Swan Motif



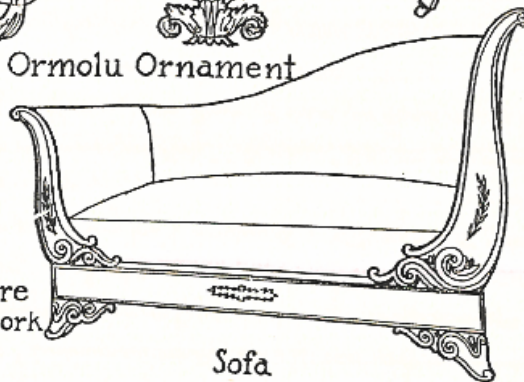
Armchair



Classical Figure used in metalwork and painting



Ormolu Ornament



Sofa



Cornucopia



Saucière, par Claude Odiot.
Musée des Arts décoratifs, à Paris.

Empire

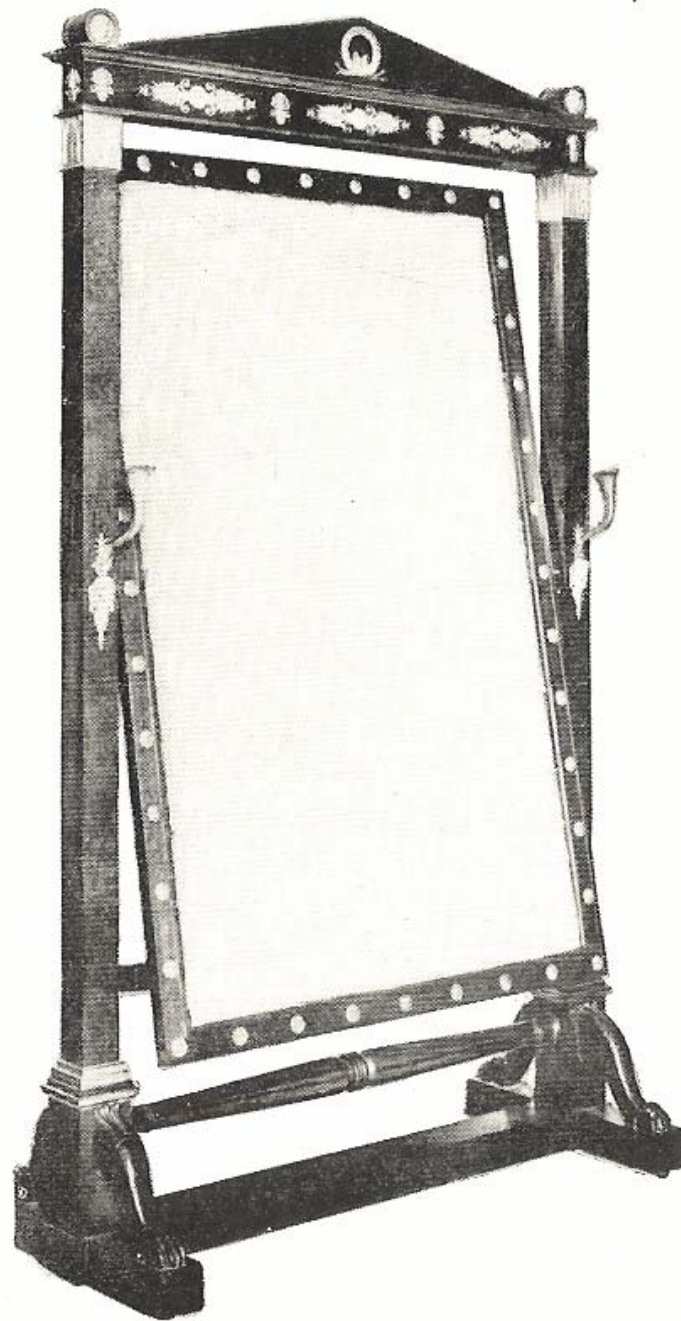


Fig. 28. — Psyché de Lætitia Bonaparte, mère de Napoléon I^{er}
Palais de Fontainebleau.

Empire

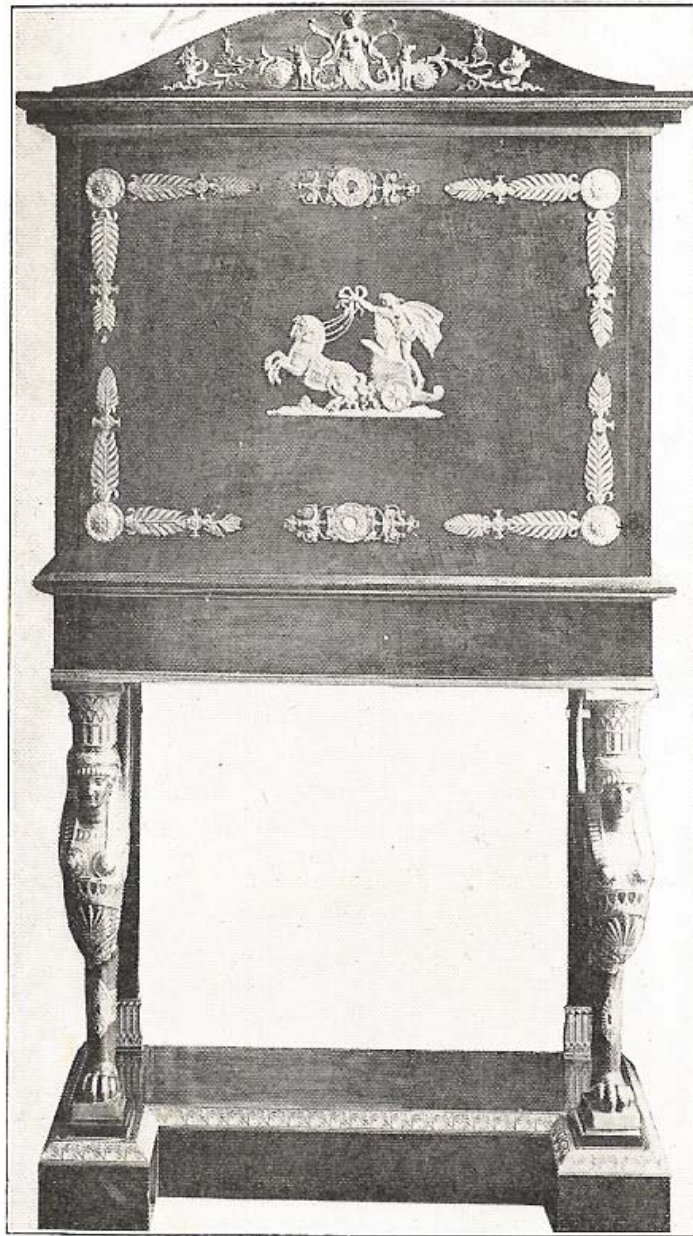


Fig. 26. — Secrétaire à abattant.
Château de la Malmaison.

Empire



Fig. 24. — Fauteuil Empire, par Jacob frères.
Palais de Fontainebleau.

Empire



Salon des Saisons.
Hôtel Eugène de Beauharnais, rue de Lille, n° 78, à Paris.

Empire

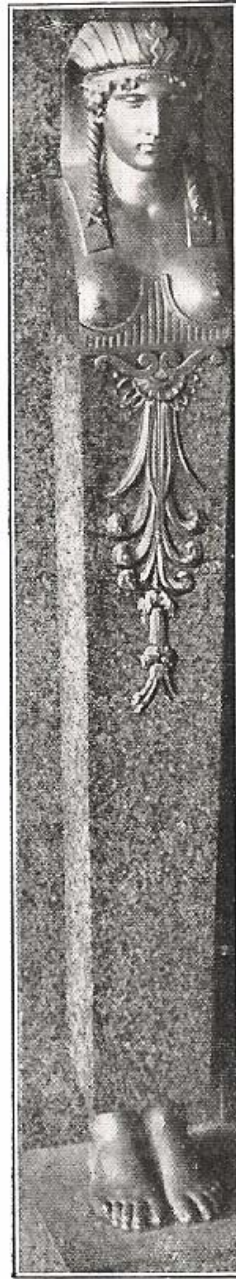
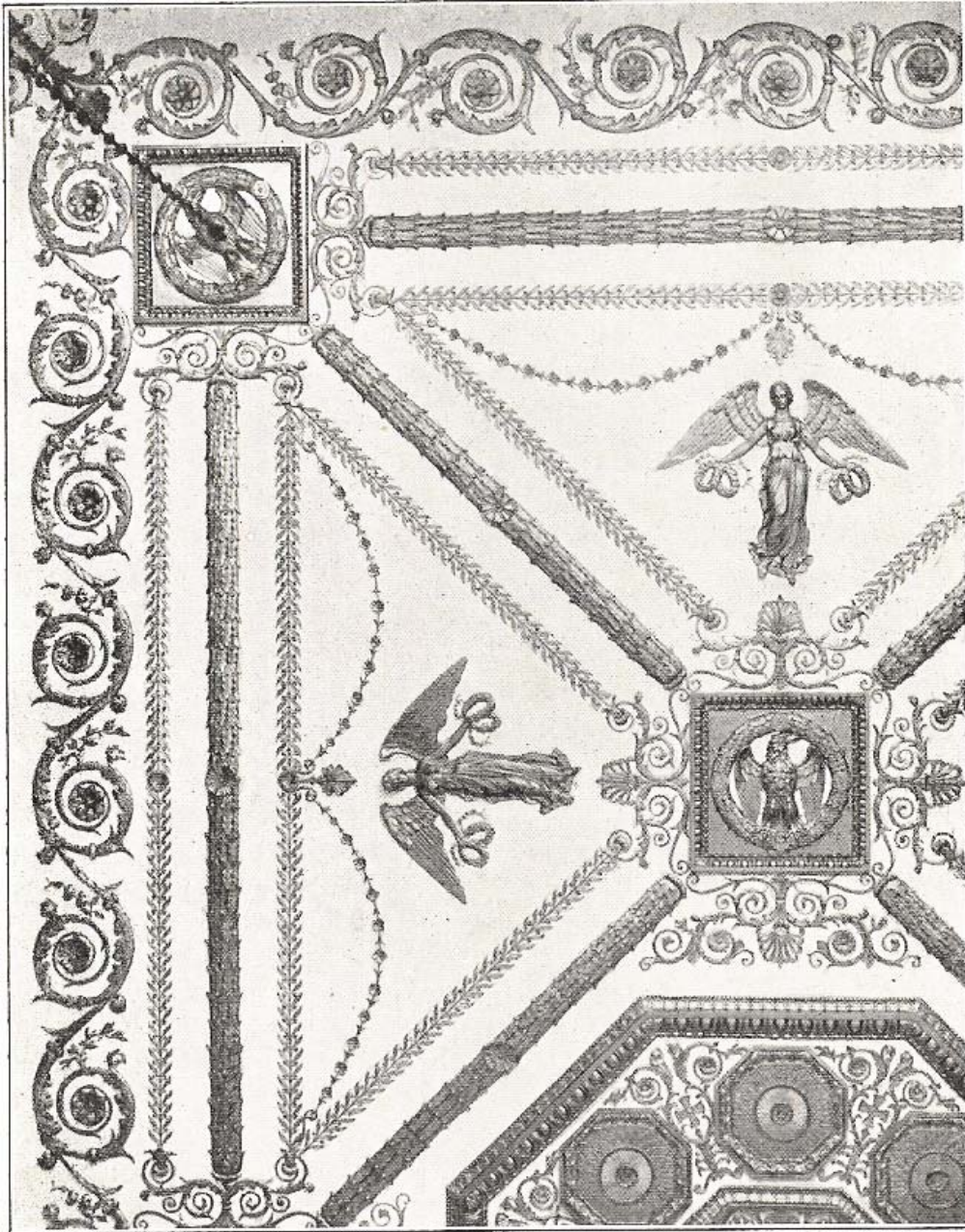


Fig. 23. — Caryatide
d'une cheminée.
Palais de Compiègne.

Empire



Plafond du salon des Saisons.
Hôtel Eugène de Beauharnais, rue de Lille, n° 78, à Paris.

Empire

Circa	WORLD STYLE	ENGLISH	FRENCH	GERMAN	AMERICAN
1550	Gothic	Elizabethan	Renaissance	Renaissance	Pilgrim
1610	Gothic	Jacobean	Renaissance	Renaissance	Pilgrim
1620	Gothic	Jacobean	Louis XIII	Renaissance	Pilgrim
1625	Baroque	Cromwellian	Louis XIII	Renaissance	Pilgrim
1650	Baroque	Commonwealth	Louis XIV	Baroque	Pilgrim
1660	Baroque	Restoration	Louis XIV	Baroque	Early Colonial
1690	Baroque	William & Mary	Louis XIV	Baroque	Early Colonial
1715	Baroque	Queen Anne	Rengence	Baroque	William & Mary
1725	Rococo	Queen Anne	Louis XV	Baroque	William & Mary
1730	Rococo	Queen Anne	Louis XV	Rococo	Queen Anne
1740	Rococo	Chippendale	Louis XV	Rococo	Queen Anne
1750	Rococo	Chippendale	Louis XV	Rococo	Chippendale
1760	Neo Classic	Chippendale	Louis XV	Neo-Classicism	Chippendale
1790	Neo Classic	Hepplewhite	Louis XVI	Neo-Classicism	Federal
1795	Neo Classic	Sheraton	Directoire	Neo-Classicism	Federal/Hepplewhite
1800	Empire	Sheraton	Empire	Empire	Federal/Sheraton
1815	Regency	Regency	Restauration	Biedermeier	Federal/Neo Classic
1830	Eclectic Style	Regency	Louis Philipps	Biedermeier	Late Federal
1840	Eclectic Style	William IV	Louis Philipps	Biedermeier	Empire
1860	Eclectic Style	Victorian	2nd Empire	Revivale	Victorian
1880	Arts & Crafts	Arts & Crafts	3rd Republic	Jugendstil	Vict. / Arts & Crafts
1900	Art Nouveau	Edwardian	Art Nouveau	Jugendstil	Art Nouveau/Mission
1930	Art Moderne	Edwardian	Art Moderne	Art Moderne	Art Deco

French Provincial Style

Copied Louis XV styles

Less costly than the Parisian styles

Biedermeier Style

1815 – 1845

German and Austria reaction to English and French Rococo styles

Copied Empire Style

Comfortable

Beautiful woods with little ornament











