

Georgian Furniture

Late 18th Century Furniture in England

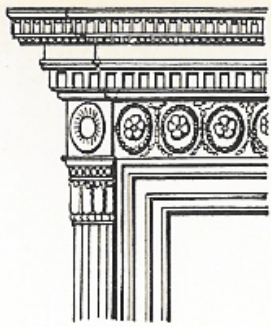
Adam

Chippendale

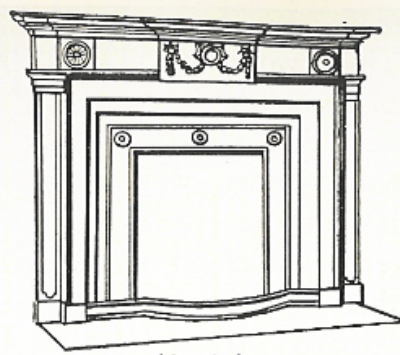
Hepplewhite

Sheraton

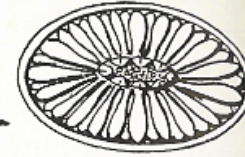
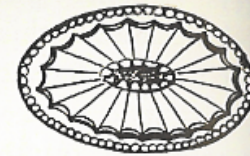
Robert Adam, interior designer
(1728-1792)



Corner of Door Trim



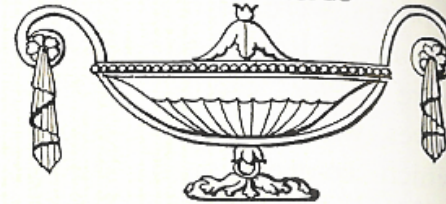
Mantel



Paterae



Frieze Ornament



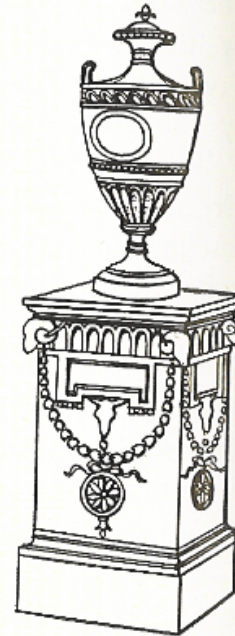
Vase Motif



Sconce



Architectural Wall and Doorway



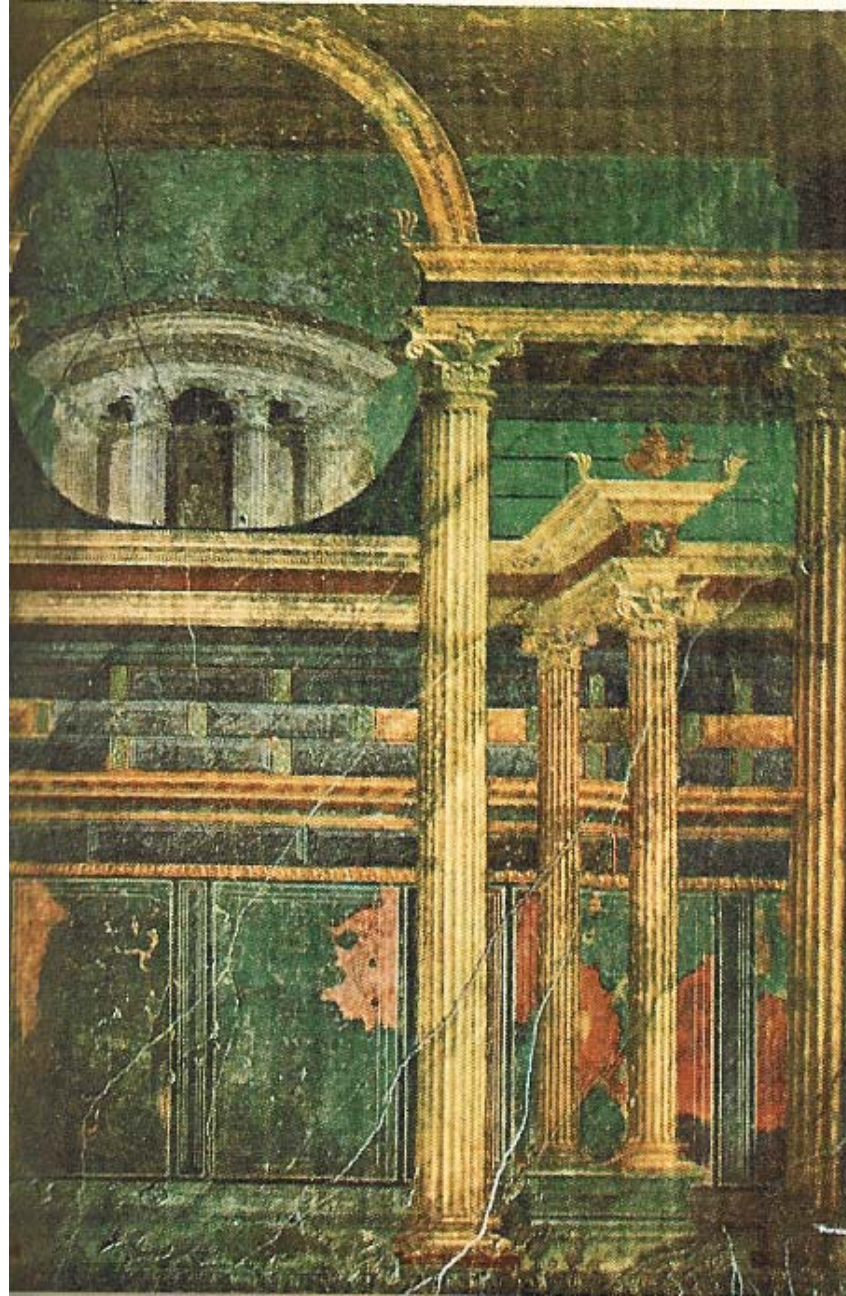
Pedestal and Urn



Mural from Pompeii, discovered in 1750s



Mural from Pompeii, discovered in 1750s



Mural from Pompeii, discovered in 1750s



Mural from Pompeii, discovered in 1750s



Drawing of the Gallery at Syon House by Robert Adam, 1773



The Kimbolton Cabinet designed by Robert Adam, 1771 – this piece of furniture was not functional but was used to display the *pietra dura* plaques on the outside



Detail of the Kimbolton Cabinet Mahogany and oak, with marquetry in satinwood and rosewood, *pietra dura* (marble stone) plaques and ormolu (gilt-bronze) mounts designed by Robert Adam, 1771



Clothes Press
designed by Robert
Adam, 1764



Chair designed by Robert Adam and manufactured by Thomas Chippendale, cabinet maker, 1765

Romanticism:

An artistic and intellectual movement originating in Europe in the late 18th century and characterized by a heightened interest in nature, emphasis on the individual's expression of emotion and imagination, departure from the attitudes and forms of classicism, and rebellion against established social rules and conventions.



Romantic painting by by Robert Adam, 1770s A Chasm with Figures



Ophelia, Sir John Everett Millais, 1852



The Lady of Shalott
John Waterhouse 1916

Thomas Chippendale, cabinet maker
(1718-1779)

*Gentleman and Cabinet-Maker's
Director, 1754*

T H E
GENTLEMAN and CABINET-MAKER'S
D I R E C T O R :

Being a large COLLECTION of the

Most ELEGANT and USEFUL DESIGNS
O F
HOUSEHOLD FURNITURE,

In the Most FASHIONABLE TASTE.

Including a great VARIETY of

CHAIRS, SOPAS, BEDS, and COUCHES; CHINA-TABLES, DRESSING-TABLES, SHAVING-TABLES, BASON-STANDS, and TEAKETTLE-STANDS; FRAMES for MARBLE-SLAES, BUREAU-DRESSING-TABLES, and COMMODES; WRITING-TABLES, and LIBRARY-TABLES; LIBRARY-BOOK-CASES, ORGAN-CASES for private Rooms, or Churches, DESKS, and BOOK-CASES; DRESSING and WRITING-TABLES with BOOK-CASES, TOILETS, CABINETS, and CLOATHS-PRESSES; CHINA-	CASES, CHINA-SHELVES, and BOOK-SHELVES; CANDLE-STANDS, TERMS for BUSTS, STANDS for CHINA JARS, and PEDESTALS; CISTERNS for WATER, LANTHORNS, and CHANDELIERS; FIRE-SCREENS, BRACKETS, and CLOCK-CASES; PIER-GLASSES, and TABLE-FRAMES; GIRANDOLES, CHIMNEY-PIECES, and PICTURE-FRAMES; STOVE-GRATES, BOARDERS, FRETS, CHINESE-RAILING, and BRASS-WORK, for Furniture.
--	---

A N D O T H E R
O R N A M E N T S.

TO WHICH IS PREFIXED,

A Short EXPLANATION of the Five ORDERS of ARCHITECTURE;

W I T H

Proper DIRECTIONS for executing the most difficult Pieces, the Mouldings being exhibited at large, and the Dimensions of each DESIGN specified.

The Whole comprhended in Two HUNDRED COPPER-PLATES, neatly engraved.

Calculated to improve and refine the present TASTE, and suited to the Fancy and Circumstances of Persons in all Degrees of Life.

By THOMAS CHIPPENDALE,
CABINET-MAKER and UPHOLSTERER, in St. Martin's Lane, London.

THE THIRD EDITION.

L O N D O N :

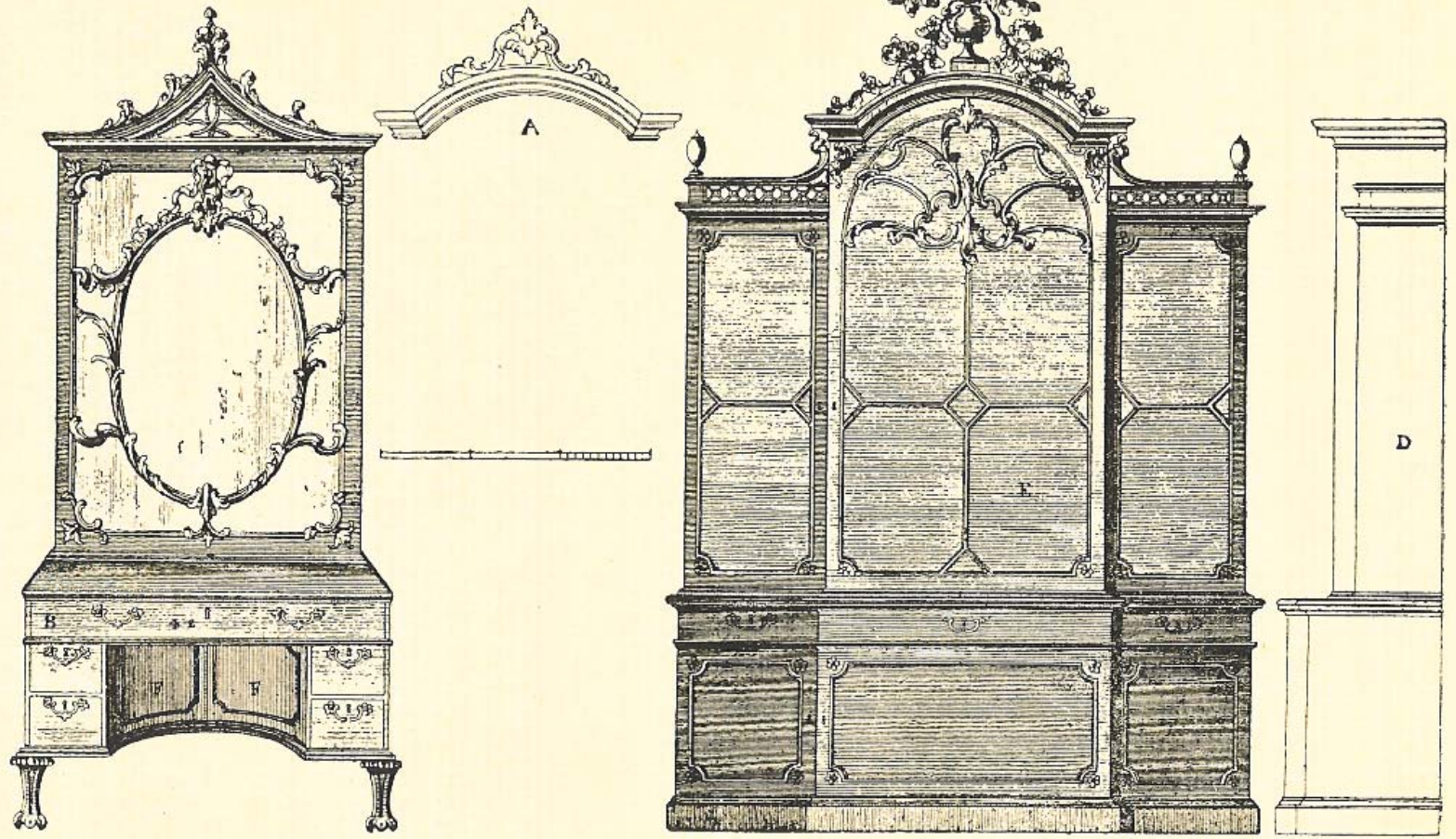
Printed for the AUTHOR, and sold at his Houfe, in St. Martin's Lane;
Also by T. BECKET and P. A. DE HOND T, in the Strand.

MDCCLXII.

*Fac-simile of the Title Page of Chippendale's "Director."
(Reduced by Photography.) The Original is in Folio size.*

Two Bookcases.

N^o. LXXXVII



T. Chippendale inv^o et delin^o.

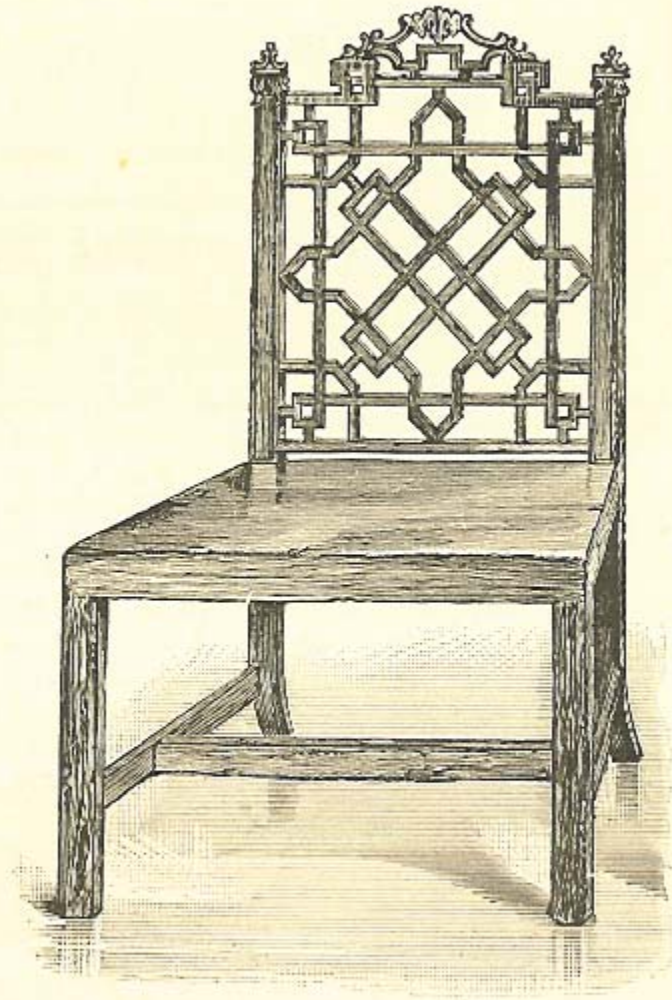
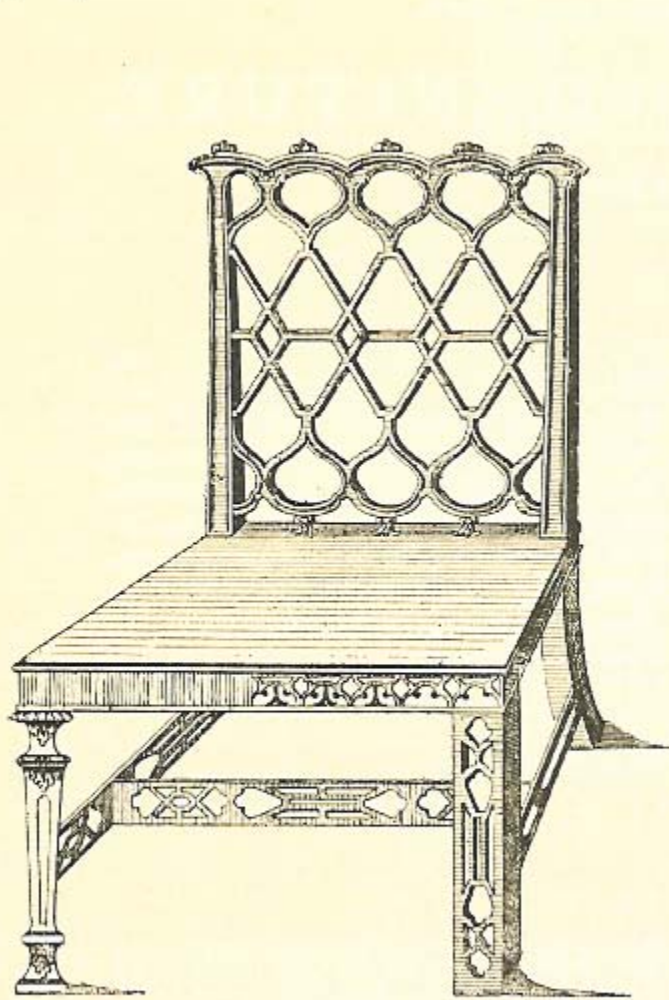
Published according to Act of Parliament 1759.

J. Taylor. Sculp

FAC-SIMILE OF A PAGE IN CHIPPENDALE'S "DIRECTOR." (The original is folio size.)

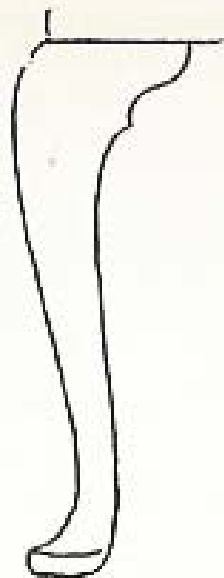


PARLOUR CHAIRS, BY CHIPPENDALE.

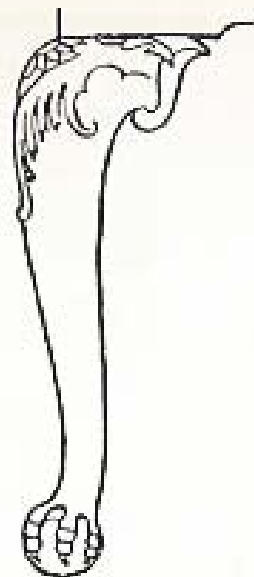


CHAIRS,
With ornament in the Chinese style, by Thomas Chippendale.

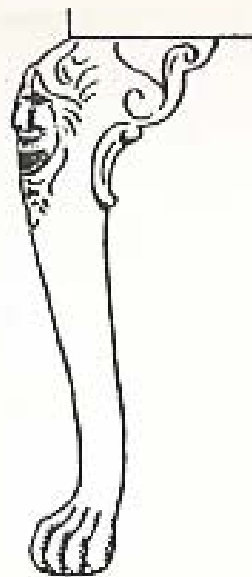
Example of *Chinoiserie*



Club
1700



Dragon
Claw
1708



Lions Paw
1725



Late
Chippendale
1760

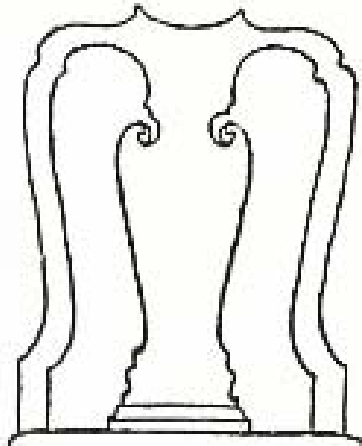


Marlborough
1760

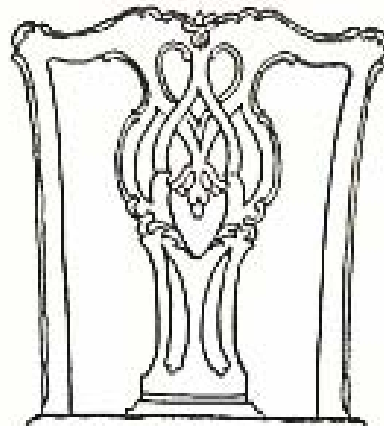


Spade
1770

The development of the 18th century English chair leg giving approximate date of the introduction of the various forms.

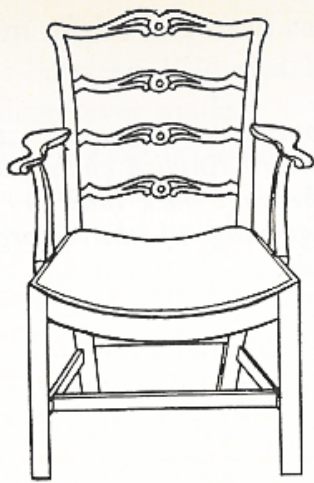


Queen Anne

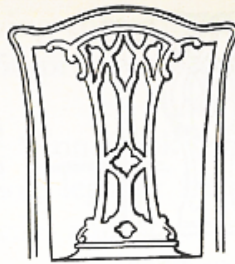


Yoke Back

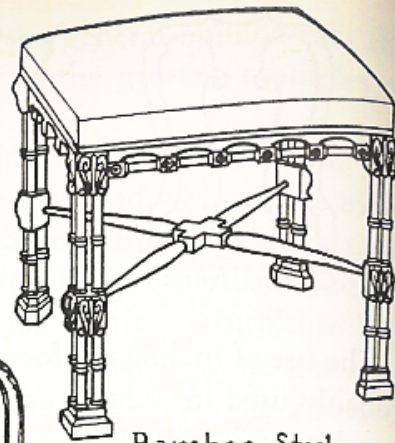
Comparison of early 18th century English chair backs. The yoke back indicates the beginning of the Georgian style.



Ladder Back



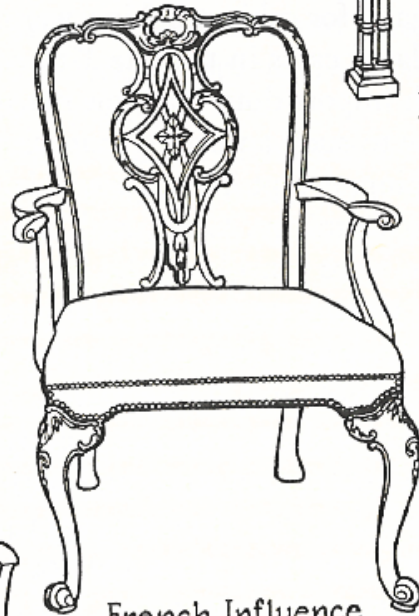
Chair Back



Bamboo Style



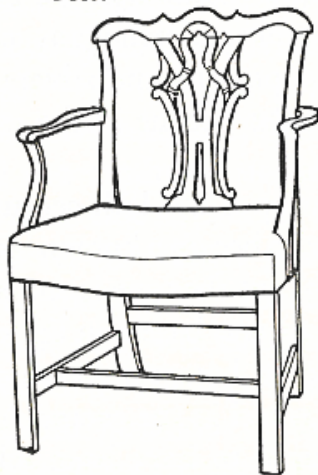
Chair Back



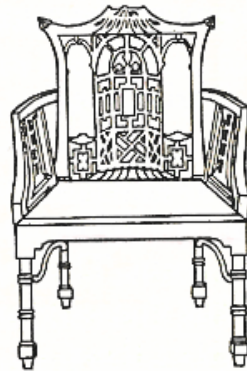
French Influence



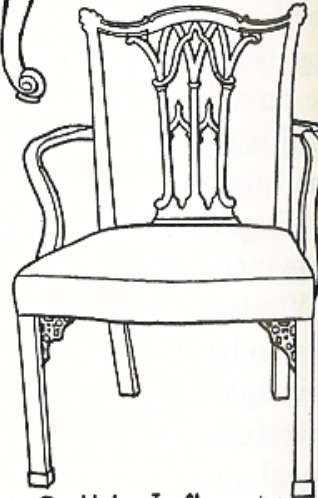
Chair Back



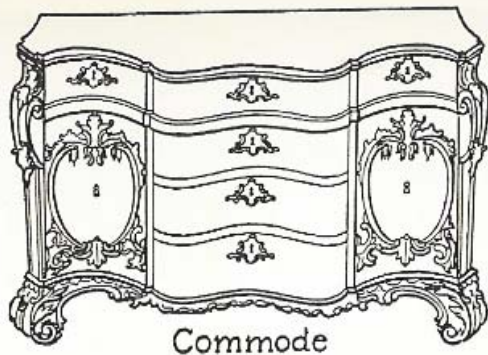
Riband Back



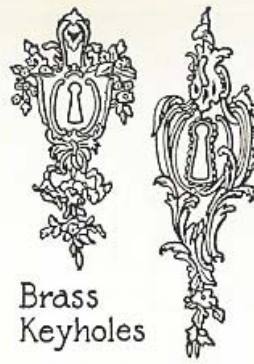
Chinese Influence



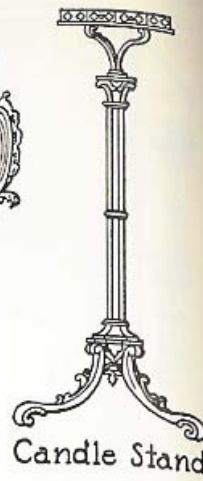
Gothic Influence



Commode



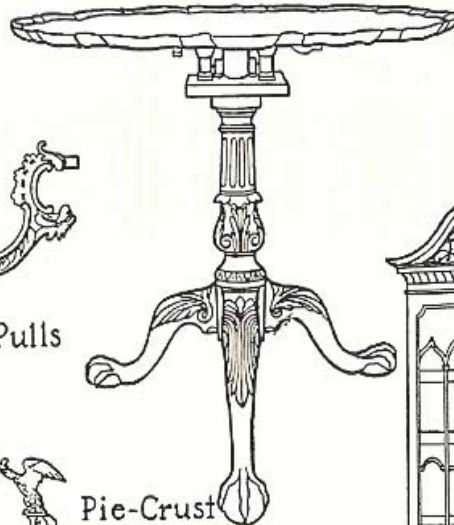
Brass Keyholes



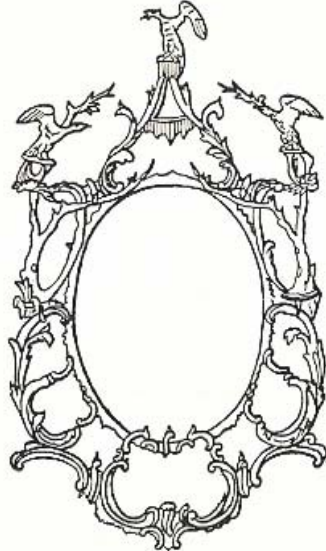
Candle Stand



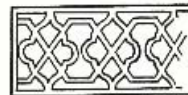
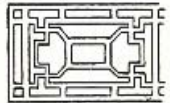
Brass Drawer Pulls



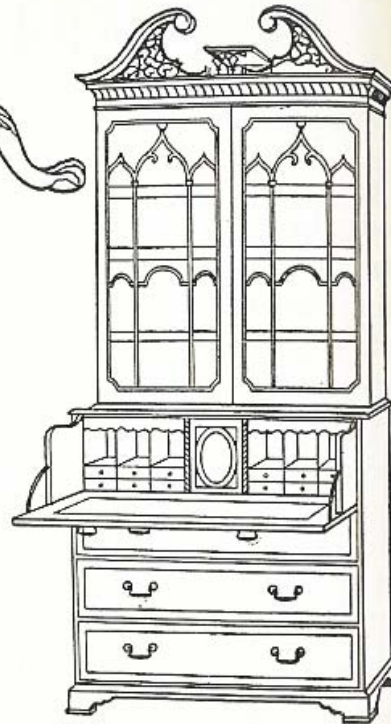
Pie-Crust
Tip-Top Table



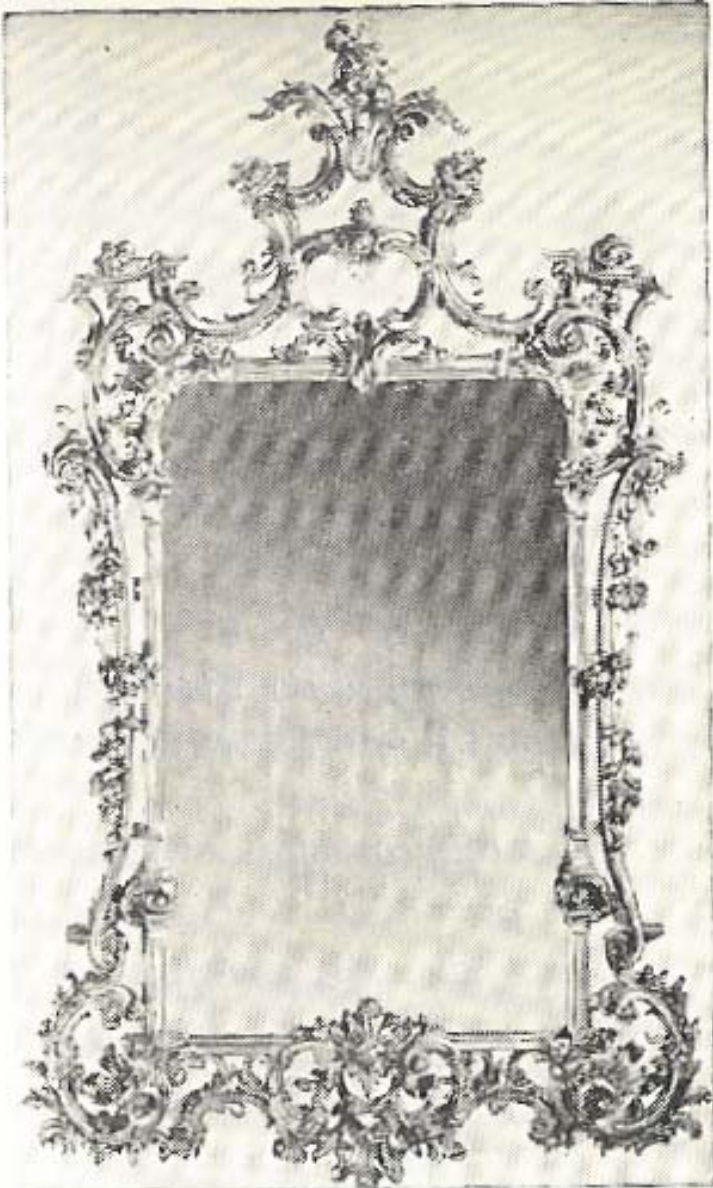
Gilded Mirror



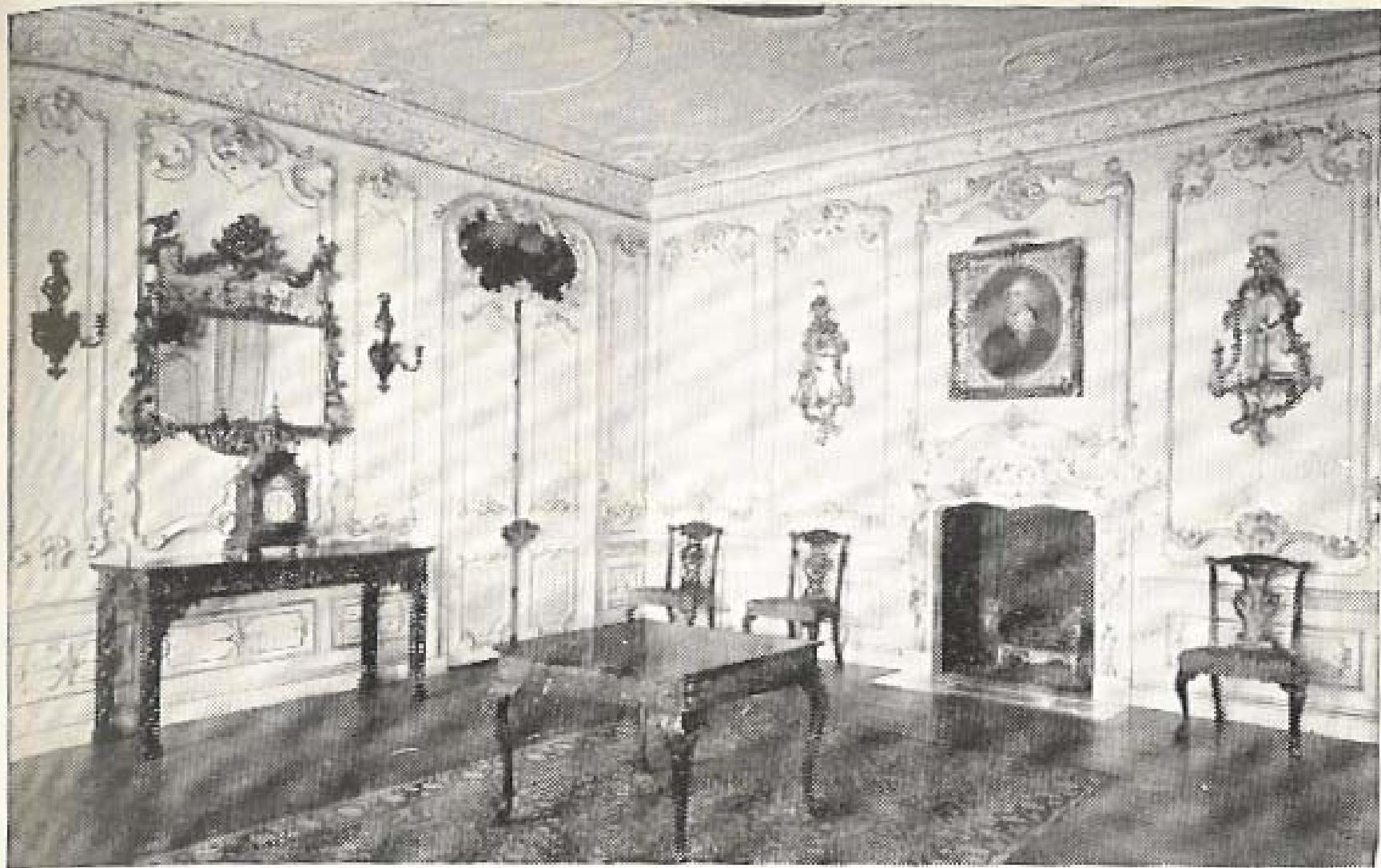
Frets



Secretary Bookcase



Chippendale type carved and gilded mirror frame showing French Rococo and Chinese influences. Total height, 6 feet 9 inches.

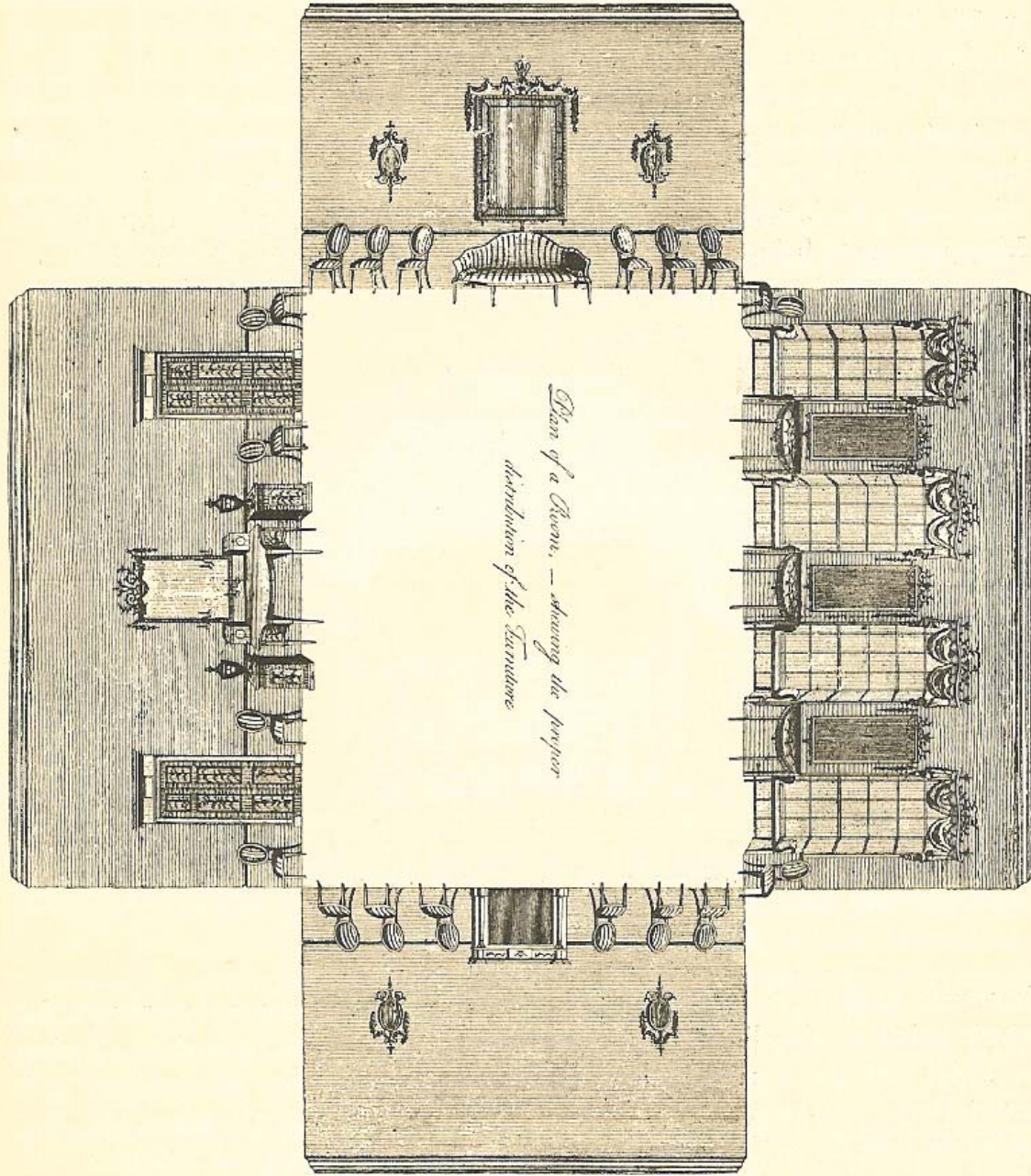


Courtesy Museum of Fine Arts, Boston

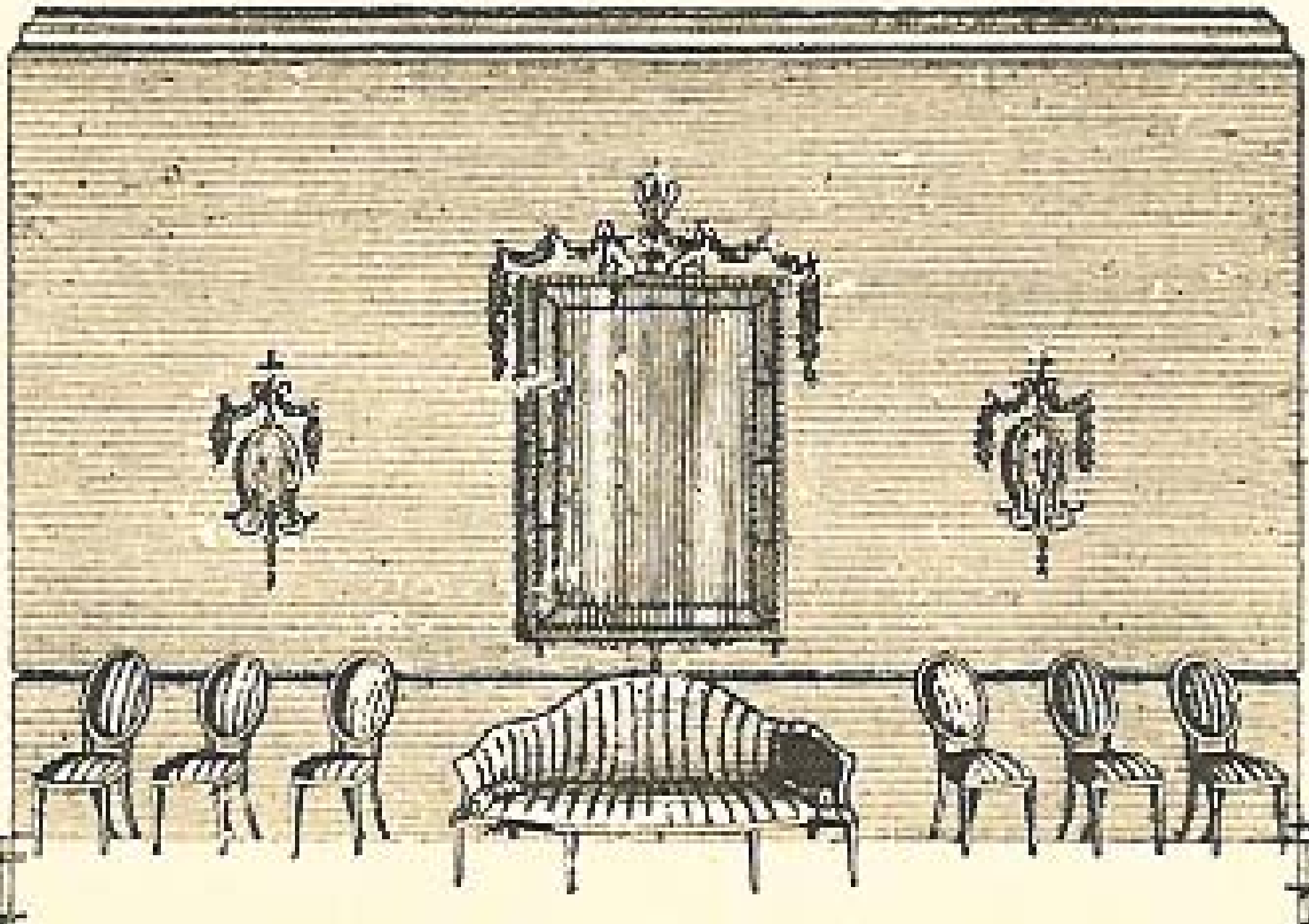
Panelled and painted room attributed to Chippendale, but showing a strong French influence in the panel shapes.

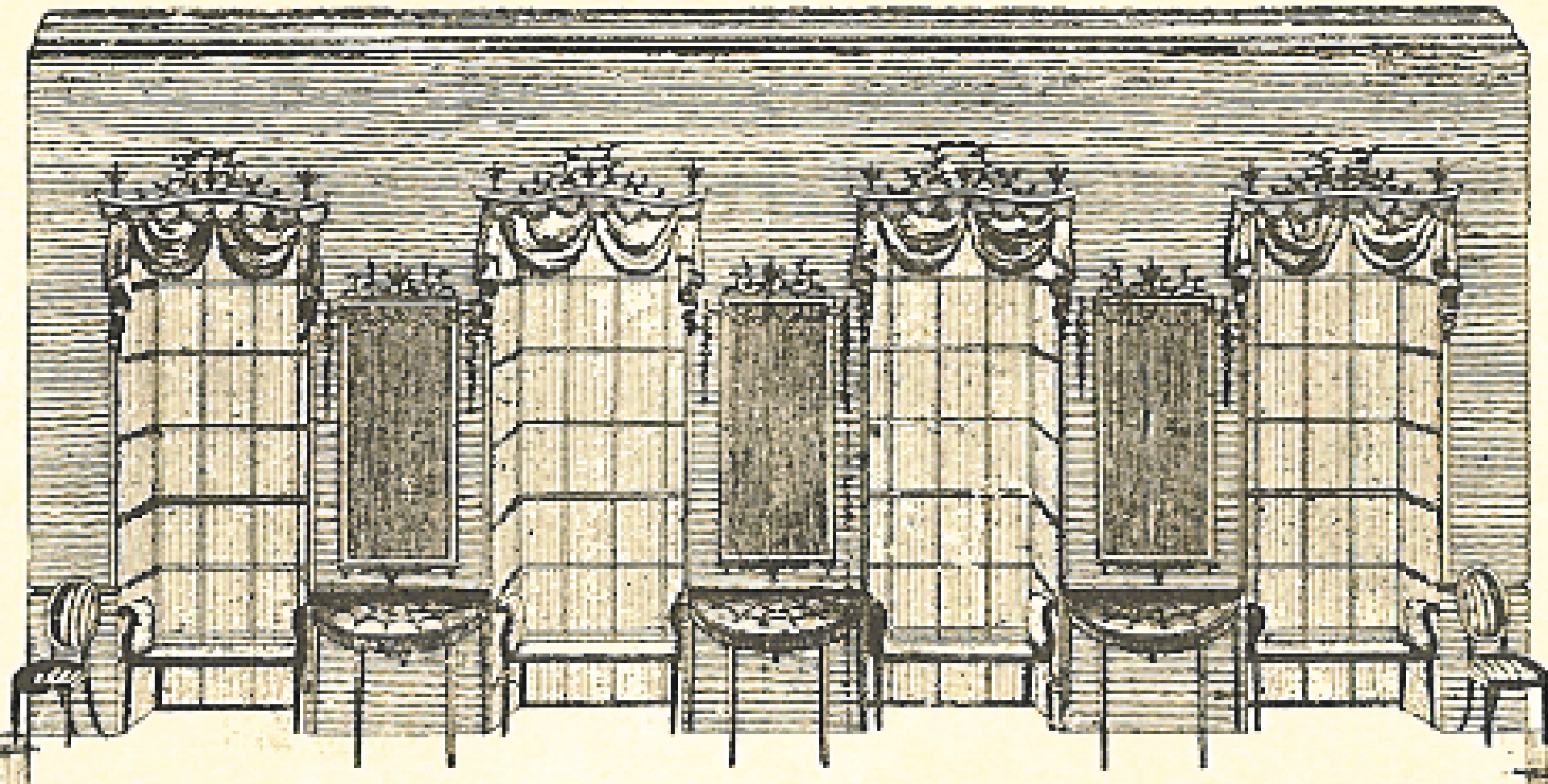
George Hepplewhite, cabinet maker
(17---1786)

*Cabinet-Maker and Upholsterer's
Guide (1788)*



FAC SIMILE OF PAGE IN HEPPLEWHITE'S "CABINET MAKER'S GUIDE,"
PUBLISHED IN 1787.

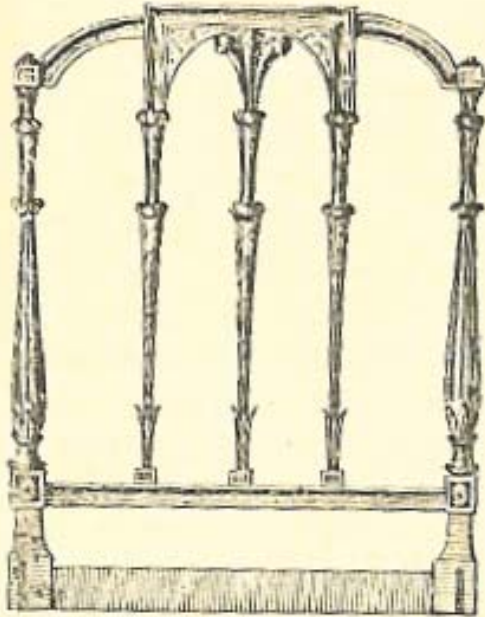




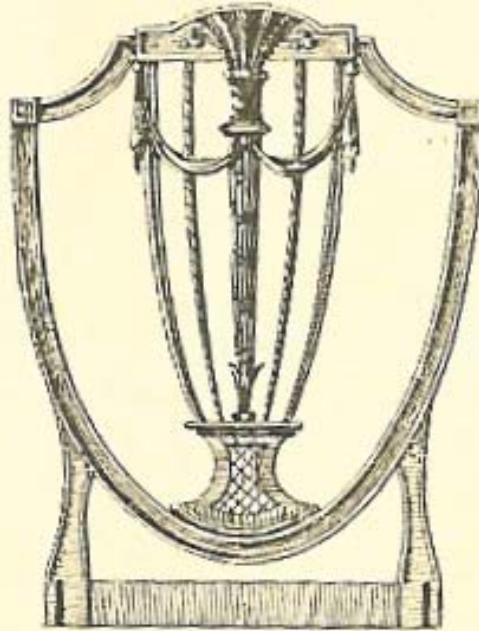
Thomas Sheraton, cabinet maker
(1751 -1806)

*Cabinet-Maker and Upholsterer's
Drawing-Book (1791–94)*

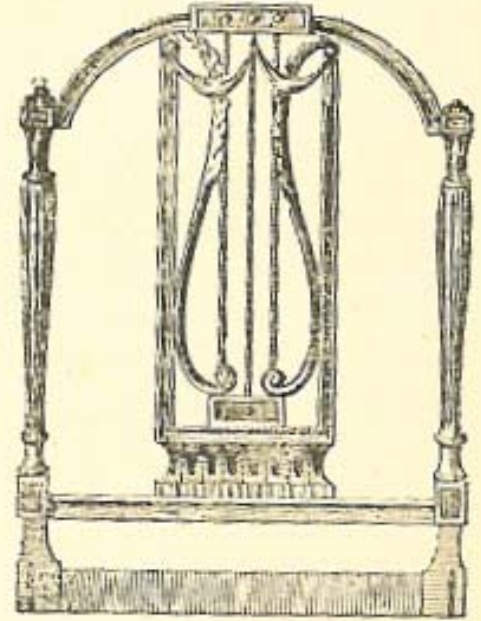
N.1.



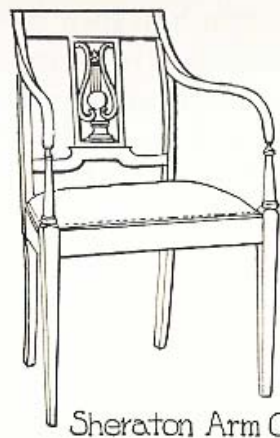
N.3.



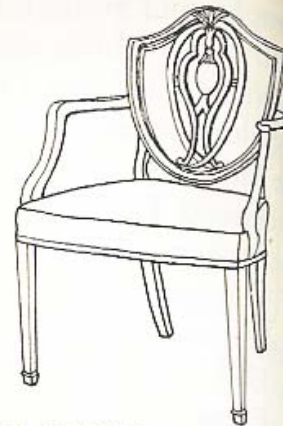
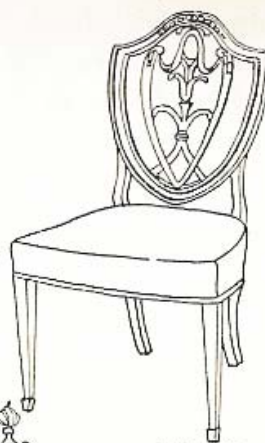
N.6.



CHAIR BACKS, FROM SHERATON'S "CABINET MAKER."



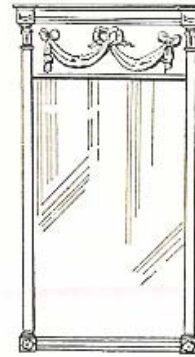
Sheraton Arm Chair



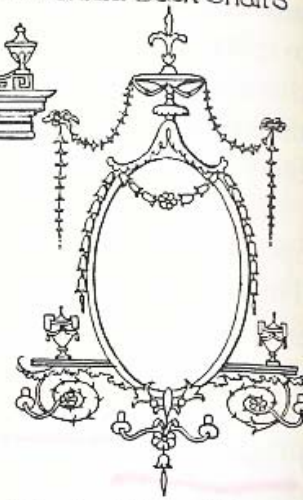
Two Hepplewhite Shield Back Chairs



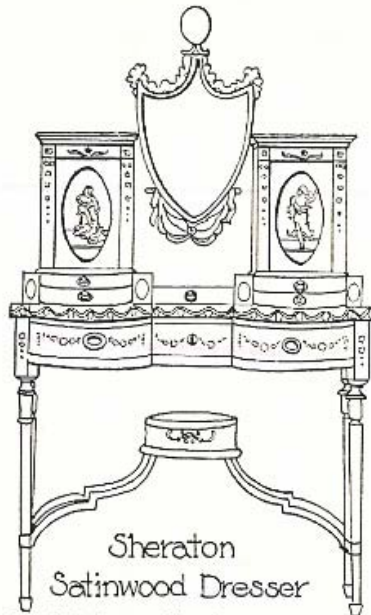
Sheraton
Pediment for Bookcase



Sheraton Mirror



Hepplewhite Mirror

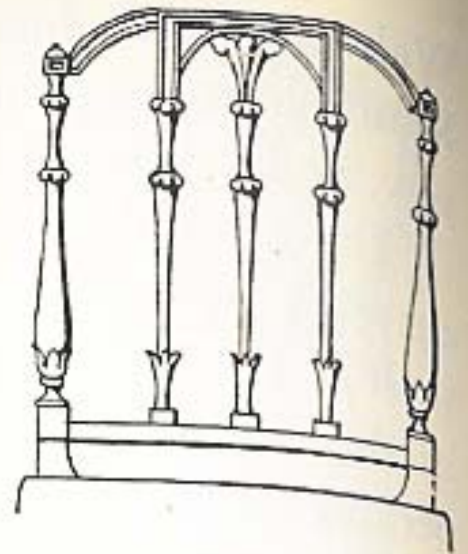
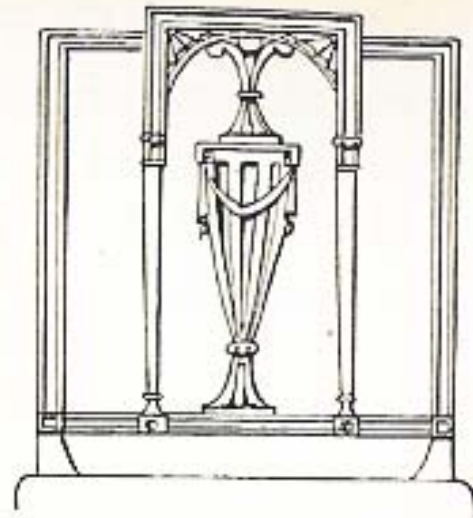
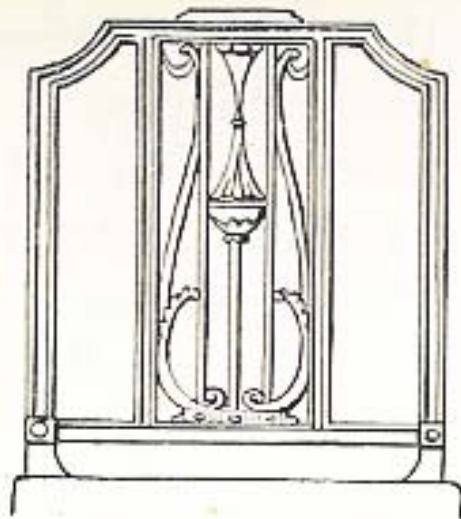


Sheraton
Satinwood Dresser

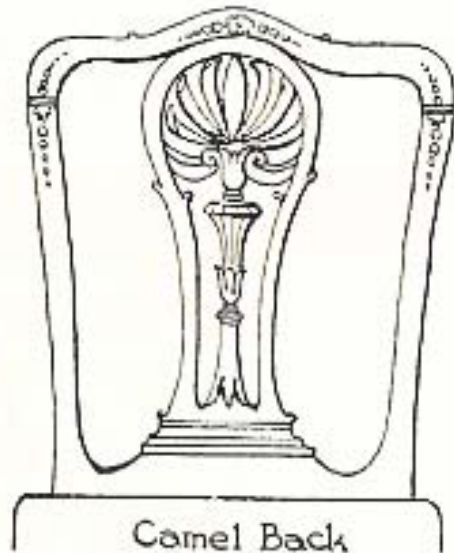
Painted Decoration by Angelica Kauffmann



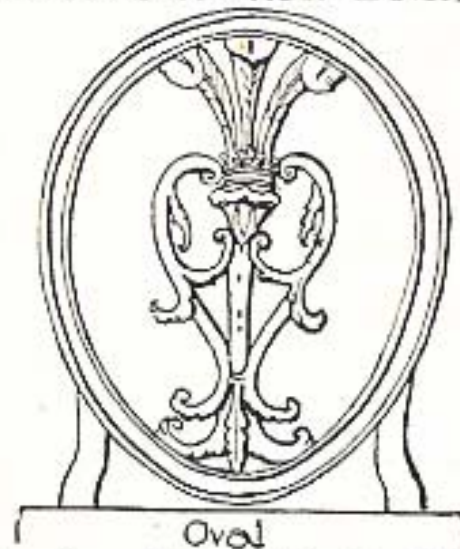
Hepplewhite Sideboard



Sheraton Chair Backs

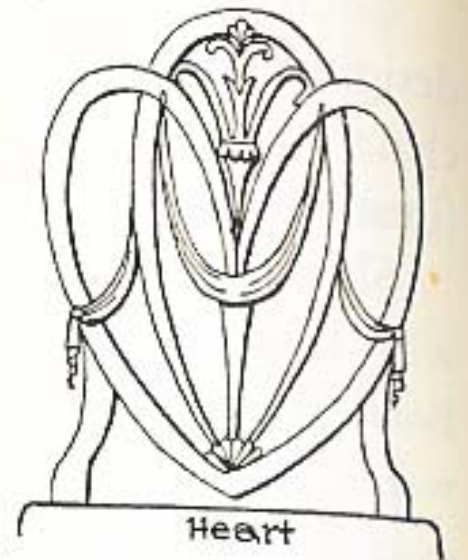


Camel Back



Oval

Hepplewhite Chair Backs



Heart

COMPARISON OF SHERATON AND HEPPLEWHITE CHAIR BACKS.

American Styles of late 18th Century



Fan Back 1770



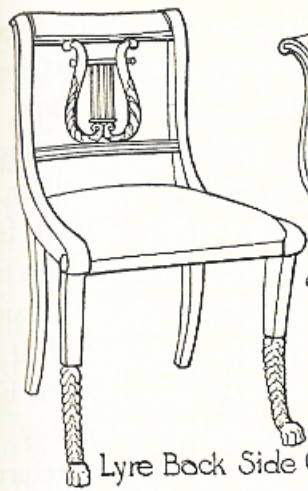
Comb Back 1770



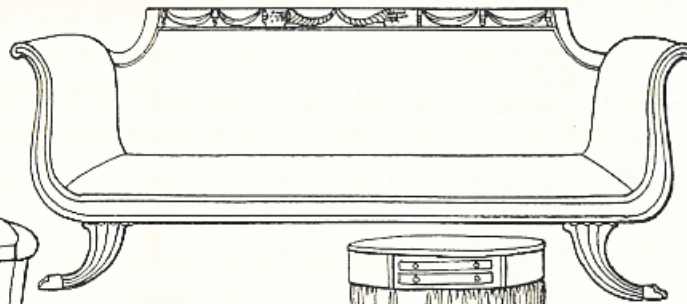
Loop Back 1770

AMERICAN WINDSOR CHAIRS.

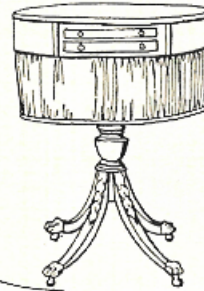
Duncan Phyfe, cabinet maker
(1768-1854)



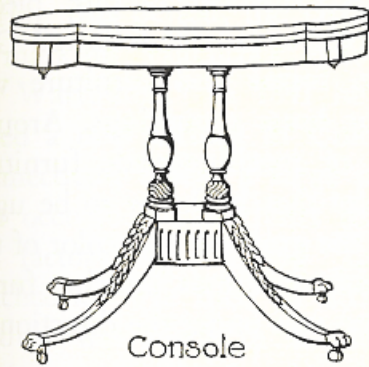
Lyre Back Side Chair



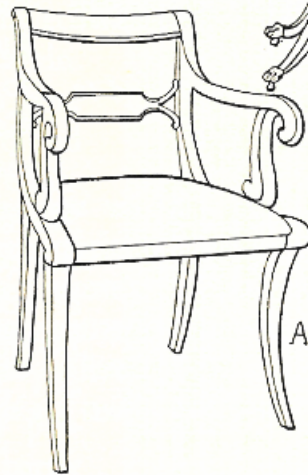
Cornucopia Leg
Sofa



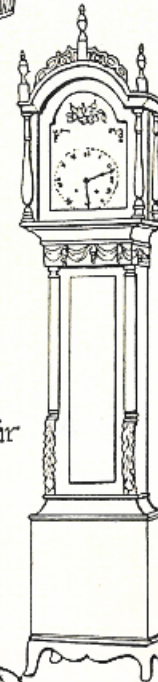
Sewing
Table



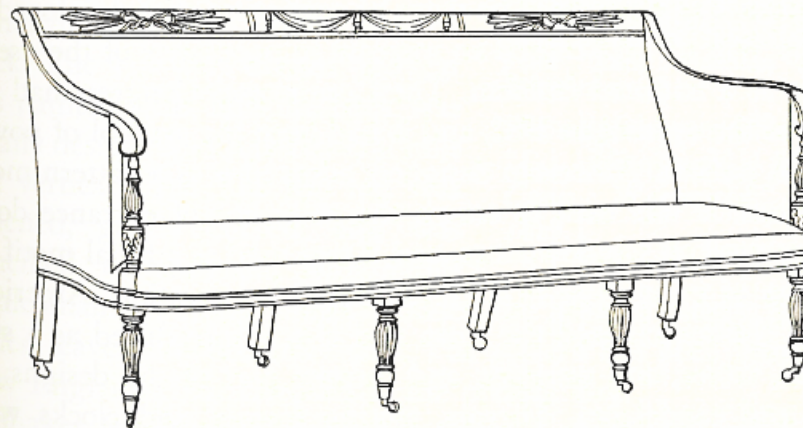
Console
Showing flared legs



Arm Chair



Tall Case
Clock



Sheraton
Type Sofa



Duncan Phyfe Chair,
1771

Lambert Hitchcock, cabinet maker
(1795-1852)



Hitchcock Chair, 1825



Hitchcock Chair, 1825



From "Early American Decoration," by
Brazer ©

*An original stencilled chair labeled
"L. Hitchcock, Hitchcocksville,
Conn. Warranted." Made about
1827.*