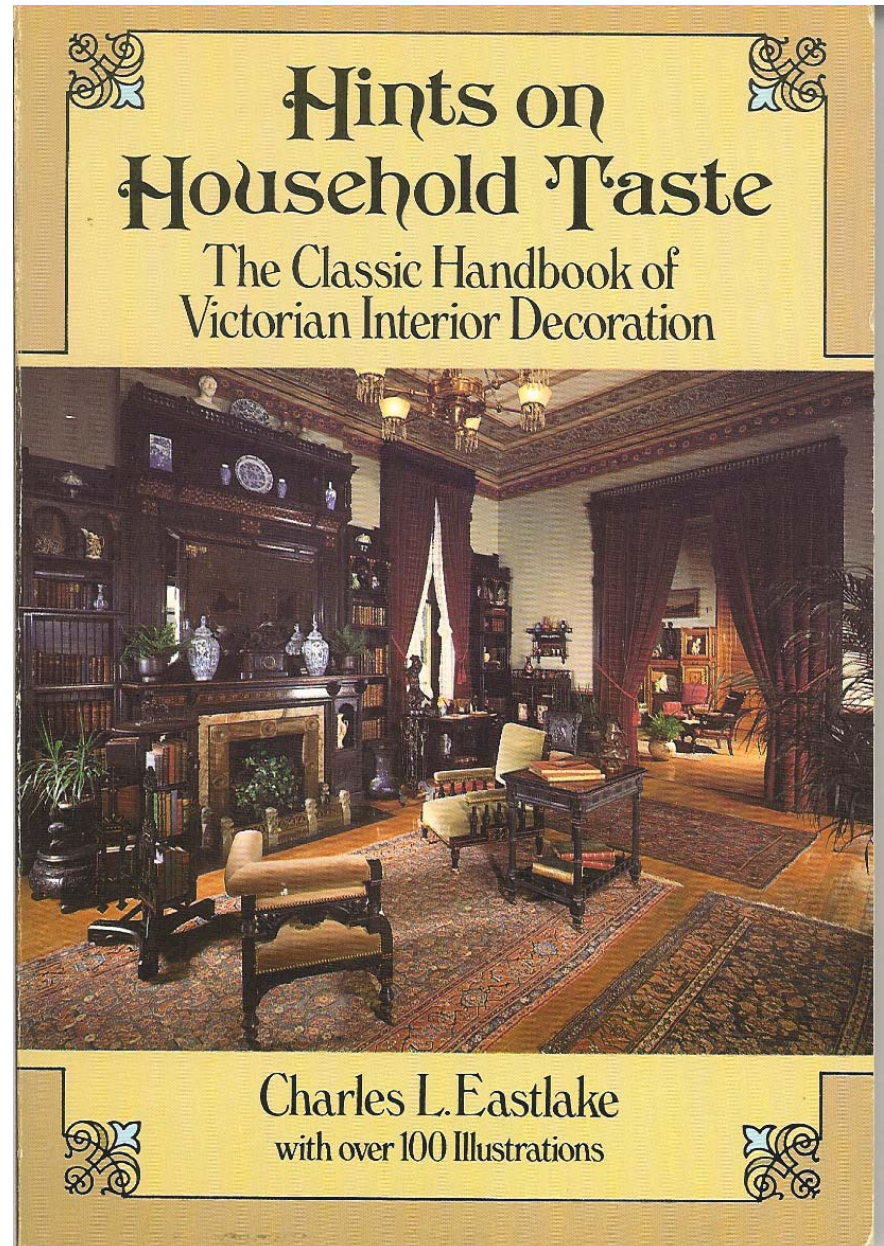
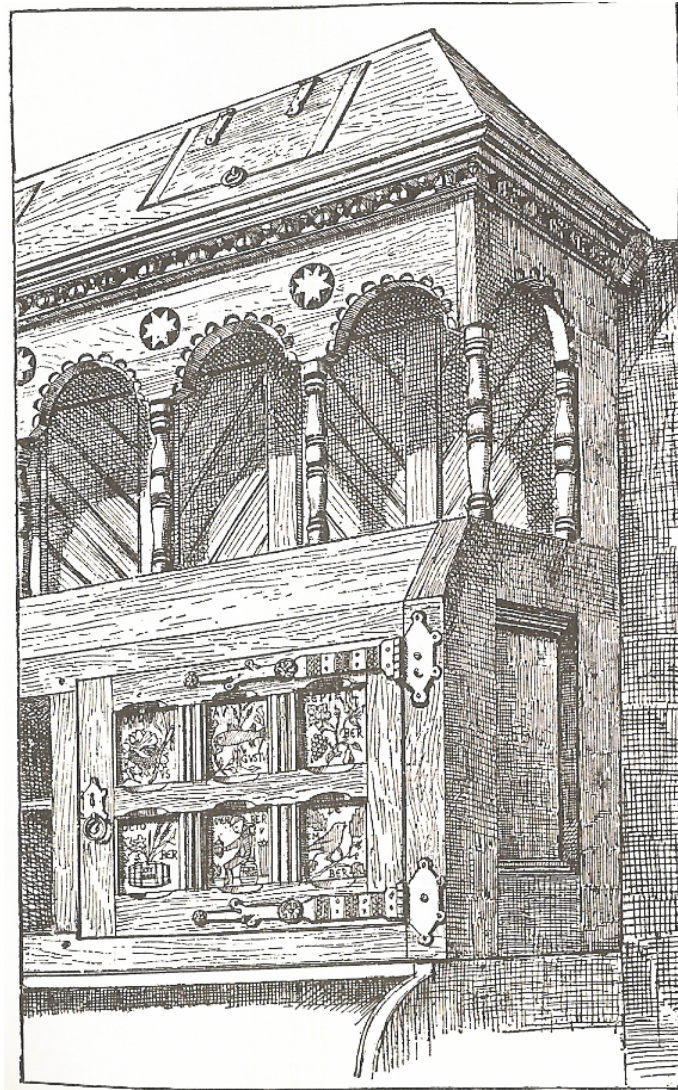


Hints on Household Taste by
Charles Eastlake, published
from articles in *The Queen*
magazine in England
beginning in 1865



THE 19TH CENTURY – EASTLAKE

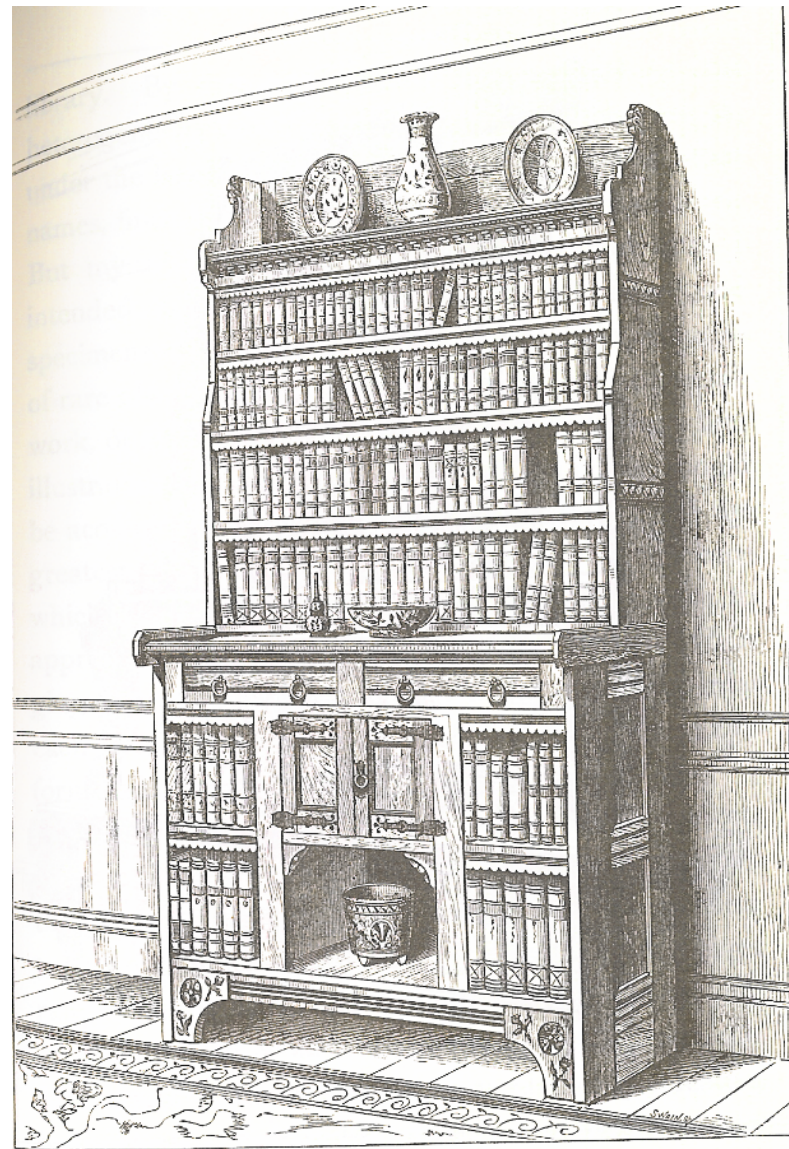


*Portion of a Cabinet,
executed from a Design by Charles L. Eastlake.*

THE 19TH CENTURY – EASTLAKE



THE 19TH CENTURY – EASTLAKE

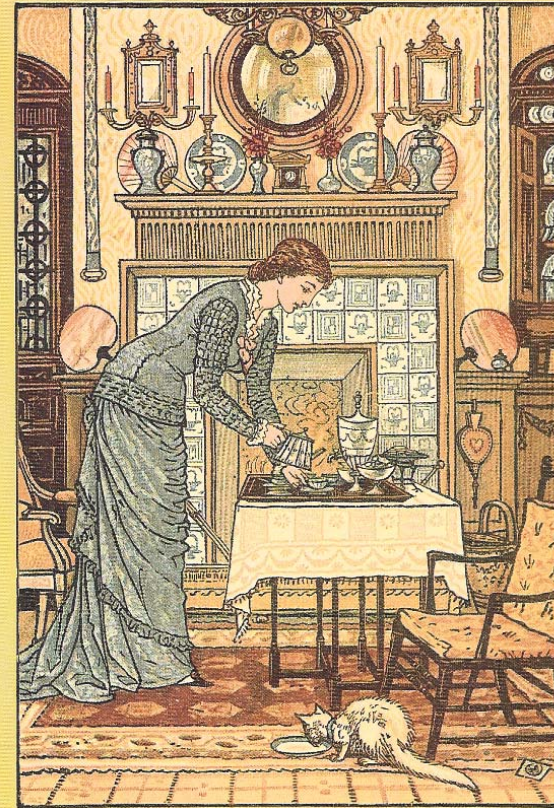


*Library Bookcase,
executed by Jackson & Graham from a design by Charles L. Eastlake.*

***The House Beautiful* by
Clarence Cook, published
from articles from Scribner's
Monthly in America beginning
in 1877**

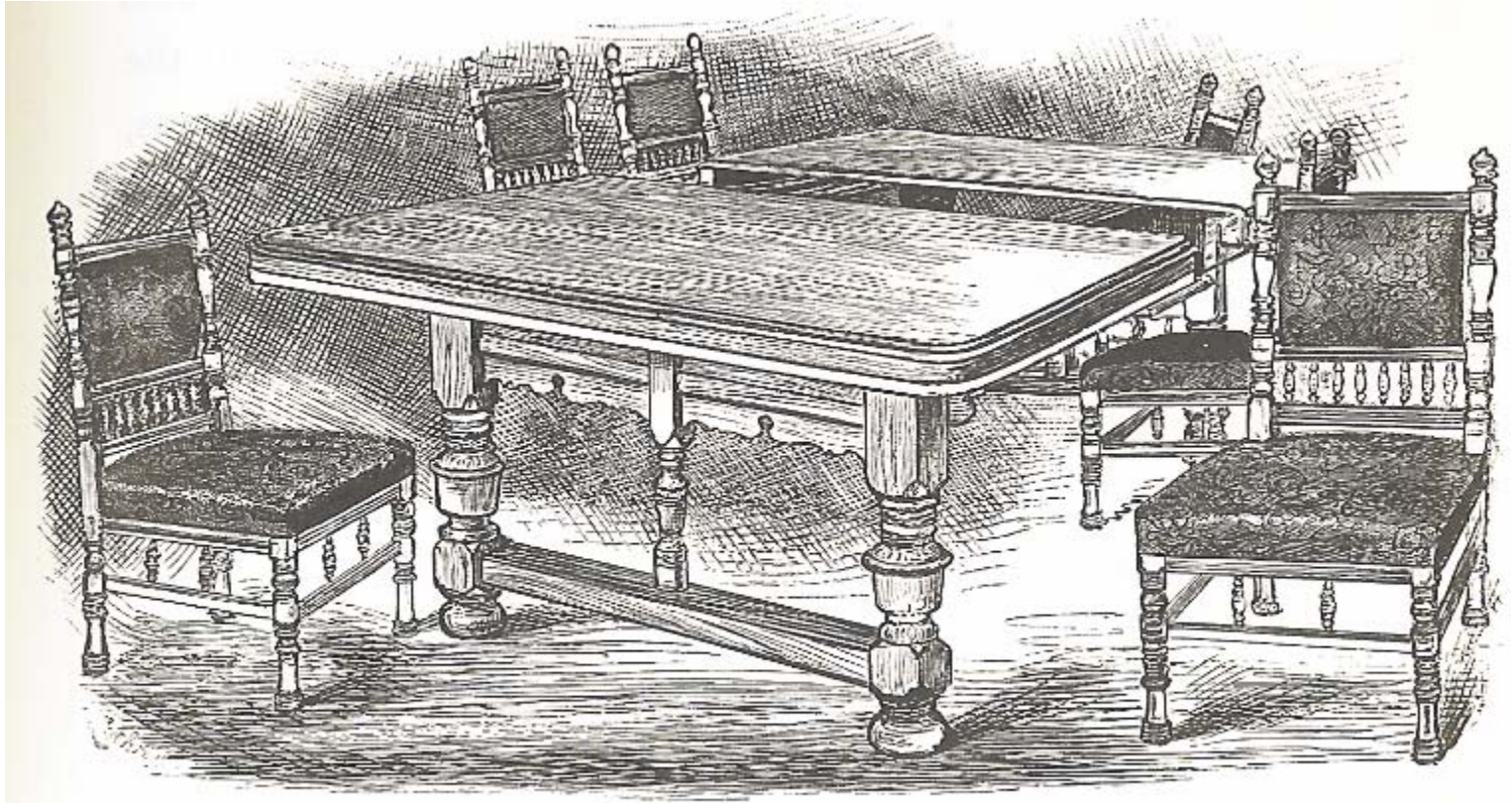
THE HOUSE BEAUTIFUL

An Unabridged Reprint of the
Classic Victorian Stylebook



Clarence Cook
With 98 Illustrations

THE 19TH CENTURY – EASTLAKE



Extension Dining-Table and Chairs.
No. 76.

THE 19TH CENTURY – EASTLAKE



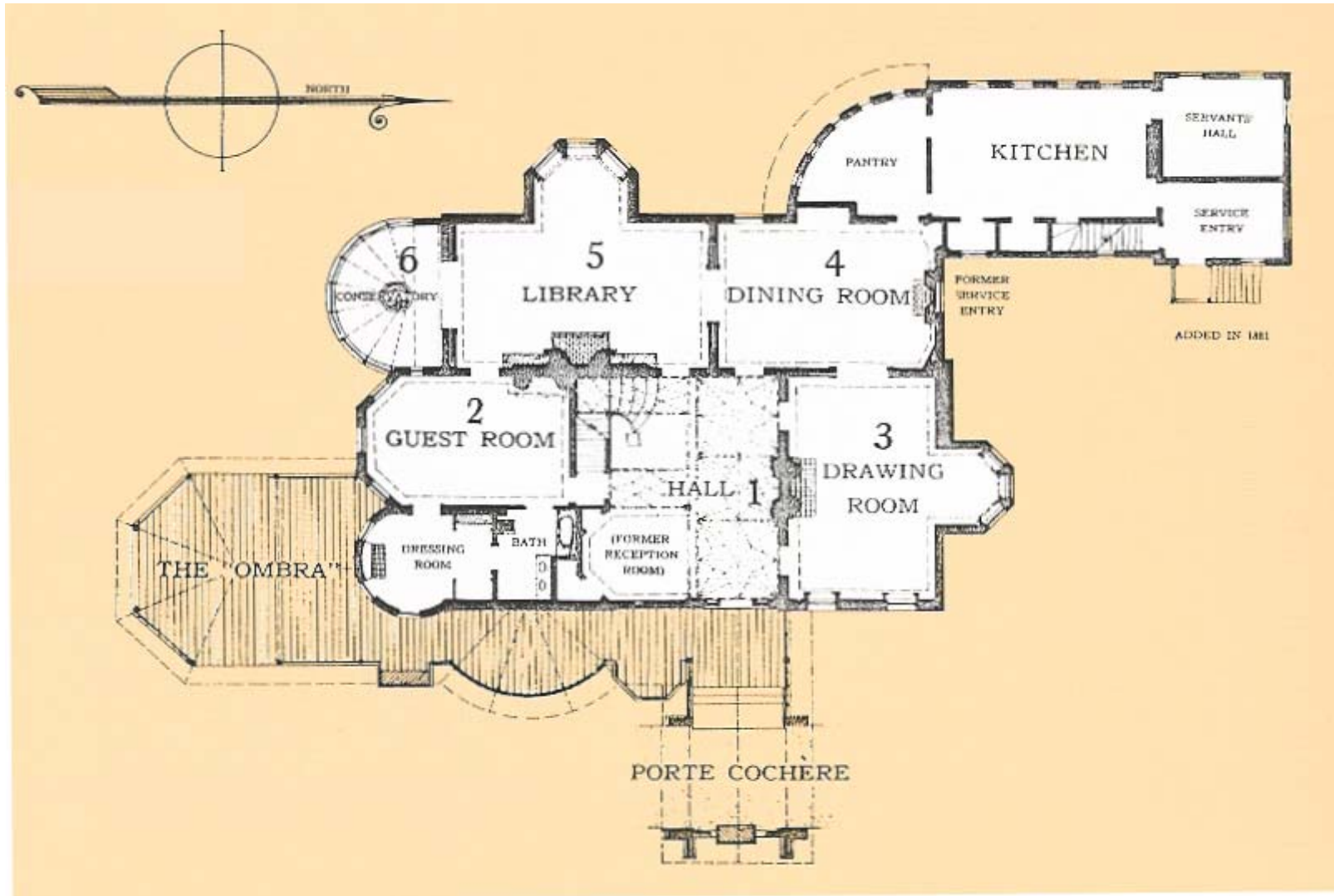
Mark Twain's House, Hartford, Connecticut, Edward Tuckerman Potter, architect and Louis Comfort Tiffany, interior designer, 1874

THE 19TH CENTURY – EASTLAKE



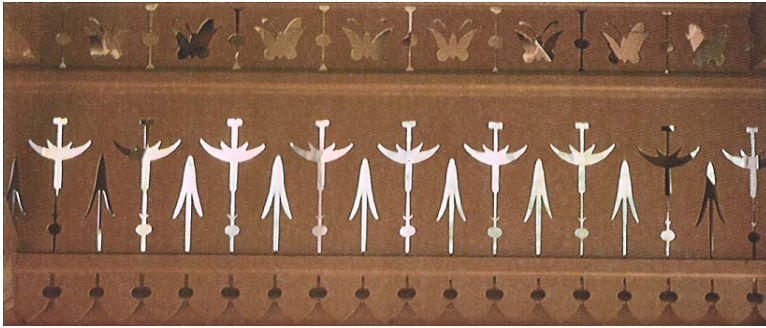
Mark Twain's House

THE 19TH CENTURY – EASTLAKE



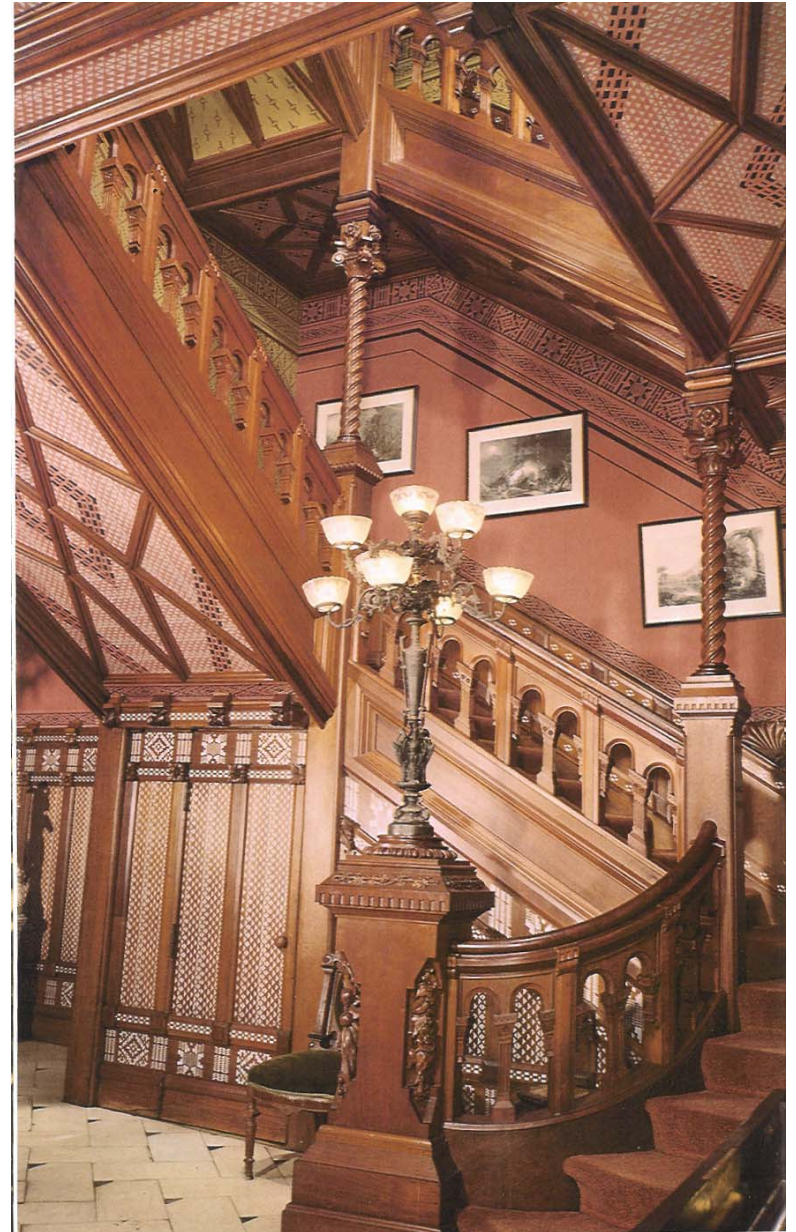
Mark Twain's House

THE 19TH CENTURY – EASTLAKE



Cutout pattern

Mark Twain's House - stairway



THE 19TH CENTURY – EASTLAKE



Mark Twain's House – Drawing Room

THE 19TH CENTURY – EASTLAKE



Mark Twain's House – Dining Room

THE 19TH CENTURY – EASTLAKE



Mark Twain's House - Library

THE 19TH CENTURY – EASTLAKE



Mark Twain's House – Library

THE 19TH CENTURY – EASTLAKE



Mark Twain's Bedroom

THE 19TH CENTURY – EASTLAKE



Gaslight sconce



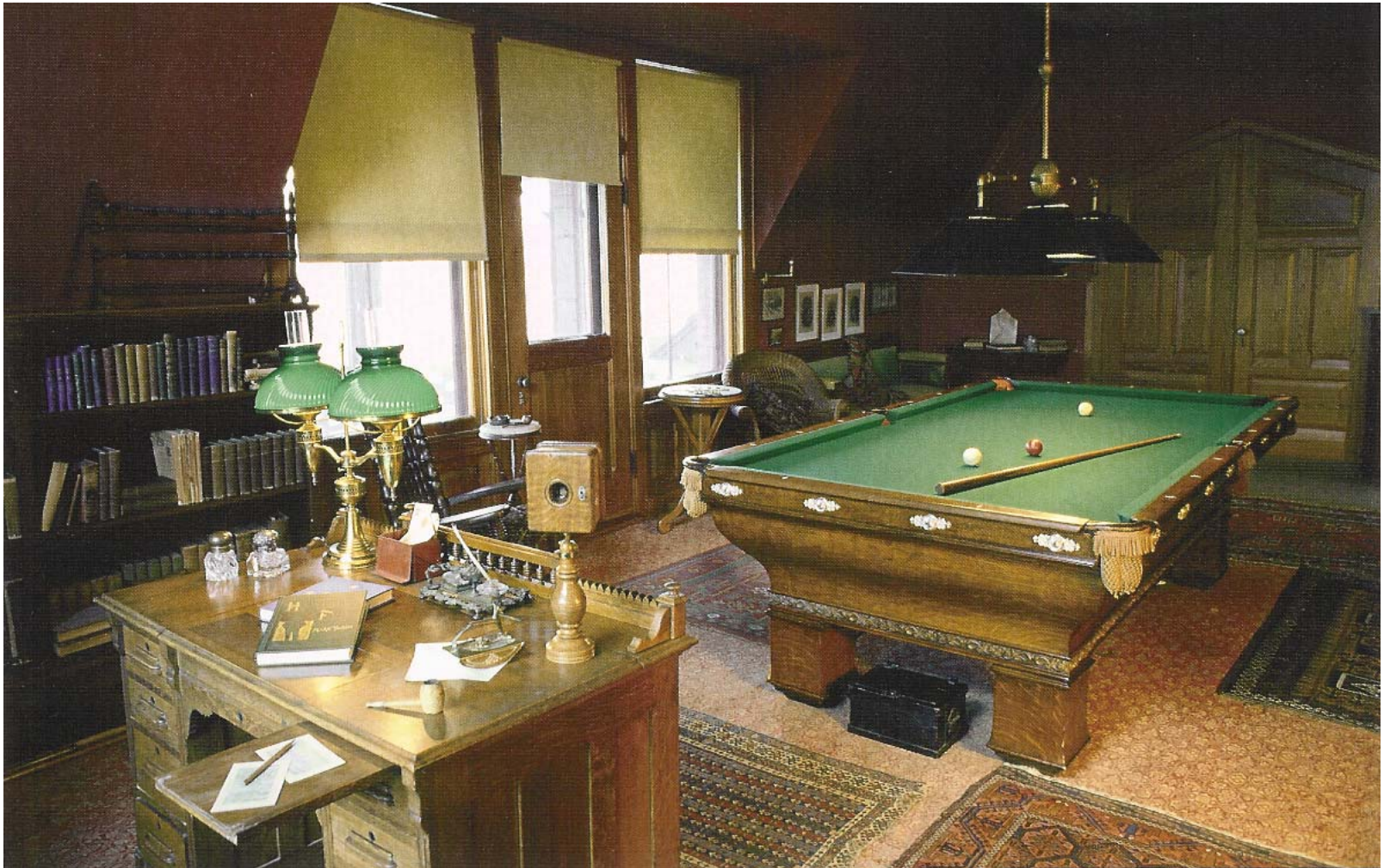
Mark Twain's House – Guest Bedroom

THE 19TH CENTURY – EASTLAKE



Mark Twain's House - Nursery

THE 19TH CENTURY – EASTLAKE



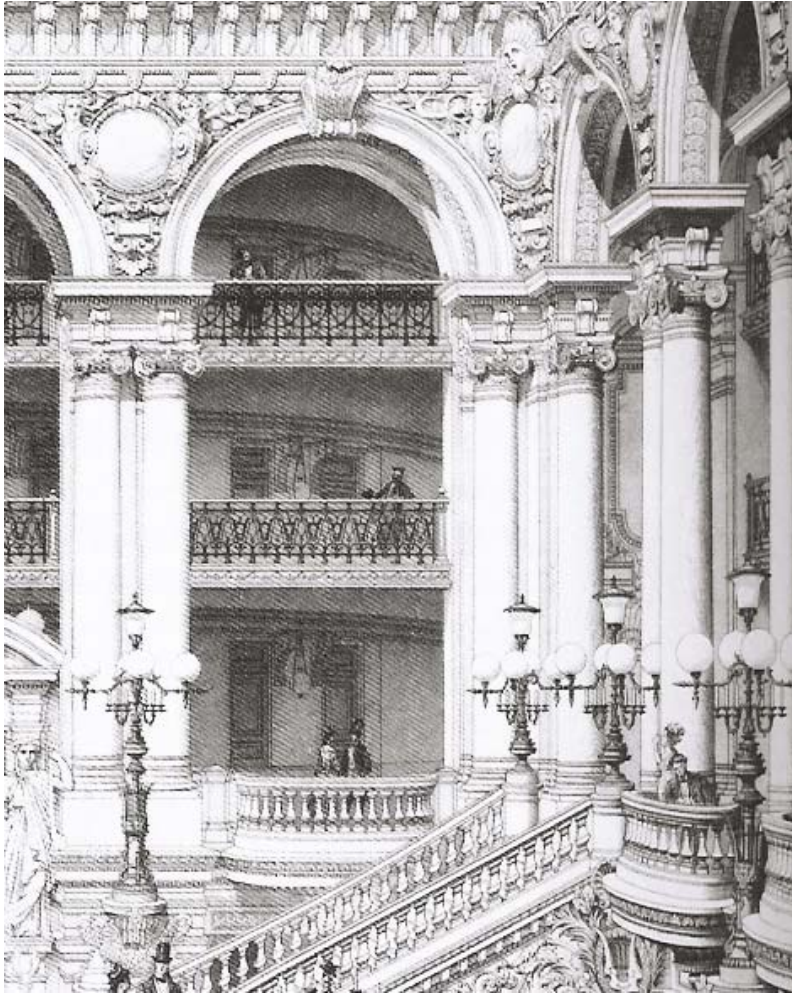
Mark Twain's House – Billiard Room

ECLECTICISM

Late 19th c. to mid 20th c.

- Ecole de Beaux Arts in Paris promoted eclecticism – a choosing of a style
- Based on History
- Promoted “Traditional” design
- Eclecticism re-created styles from the past,
- Not a revival, but pure copy – not much original
- Most popular in America

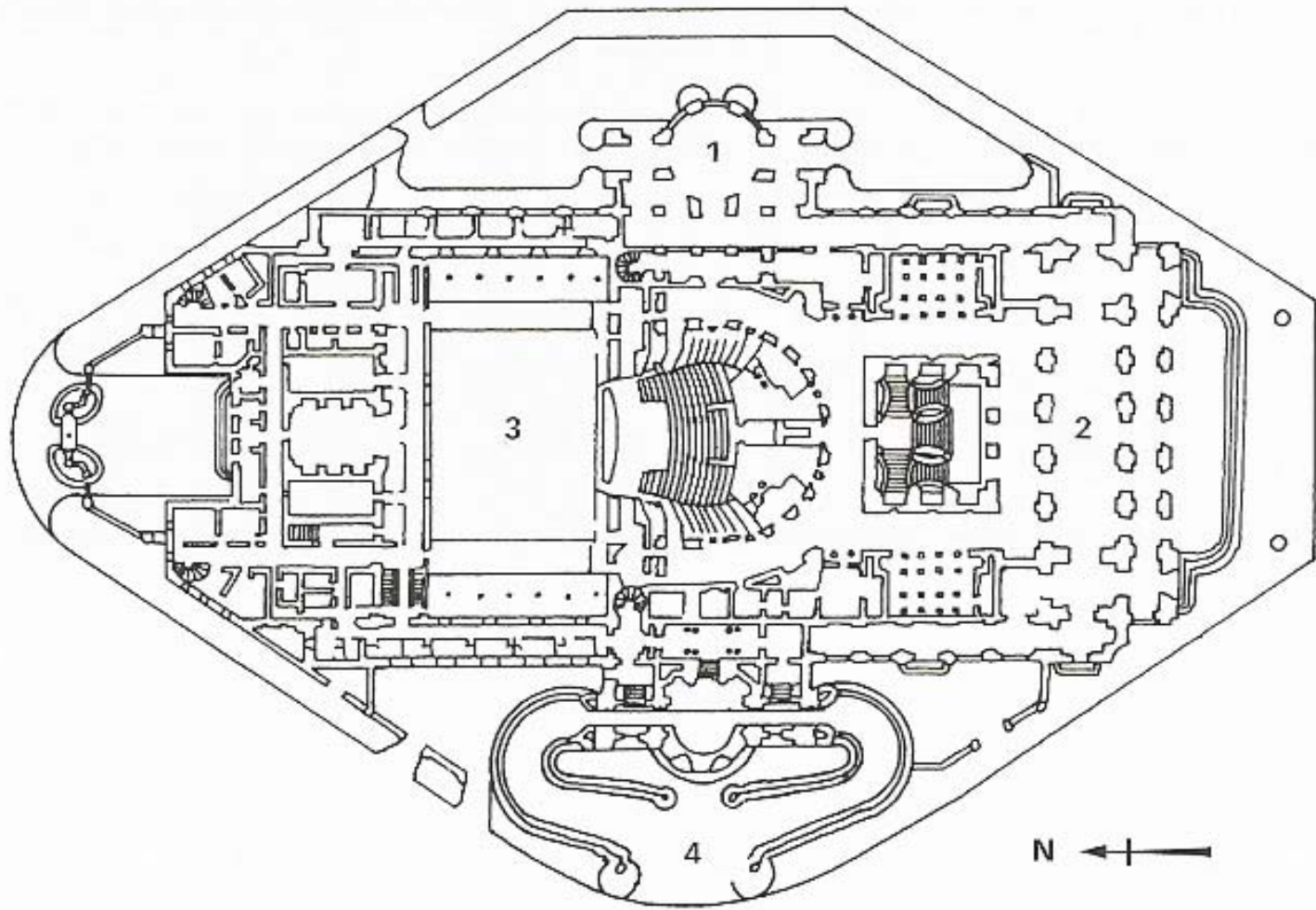
ECLECTICISM



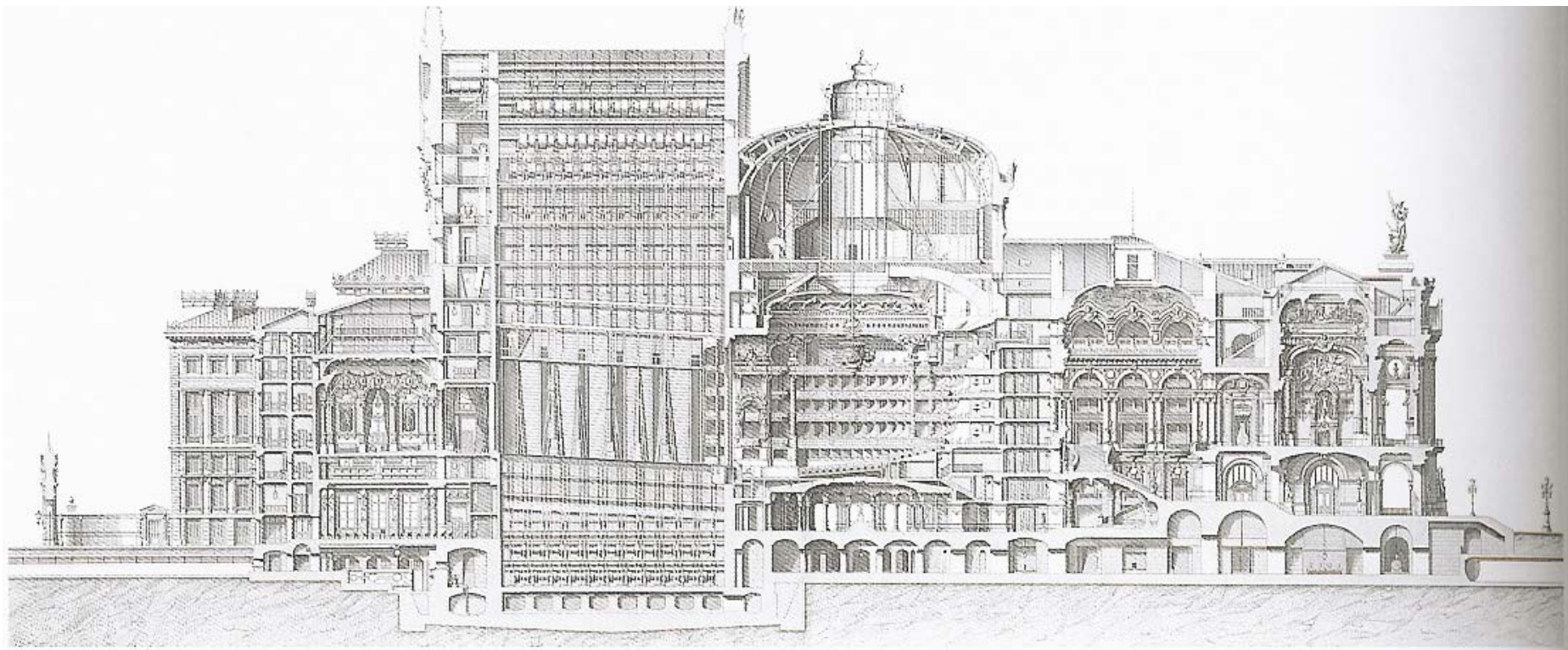
The Paris Opera, Detail



The Paris Opera, Charles Garnier, 1875



The Paris Opera, Plan, 1875



The Paris Opera, Section, 1875

ECLECTICISM



The Chicago World's Fair (World's Columbian Exposition), 1875

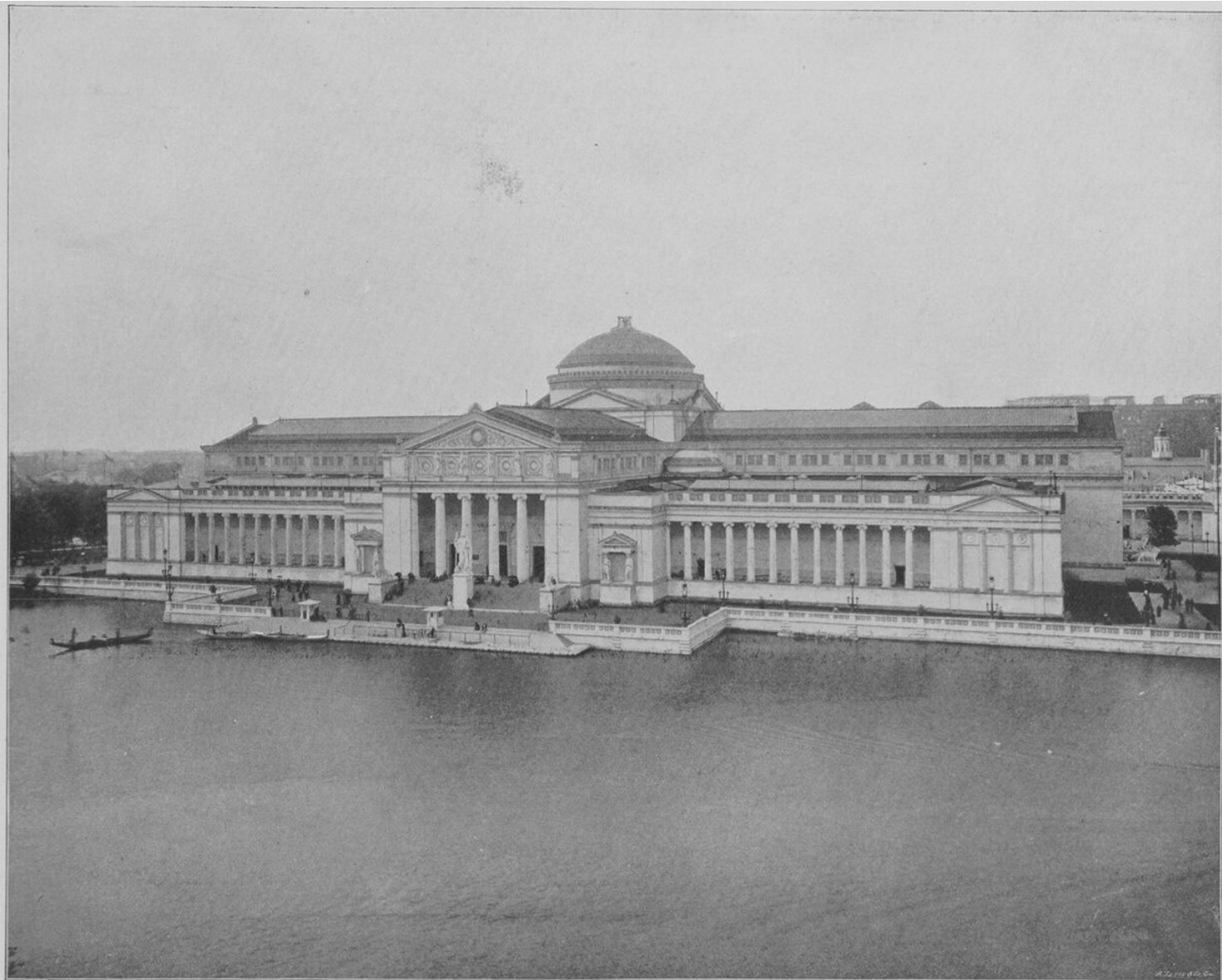
ECLECTICISM



ECLECTICISM



ECLECTICISM



The Palace of Fine Arts (now the Museum of Science and Industry), Charles Atwood

ECLECTICISM

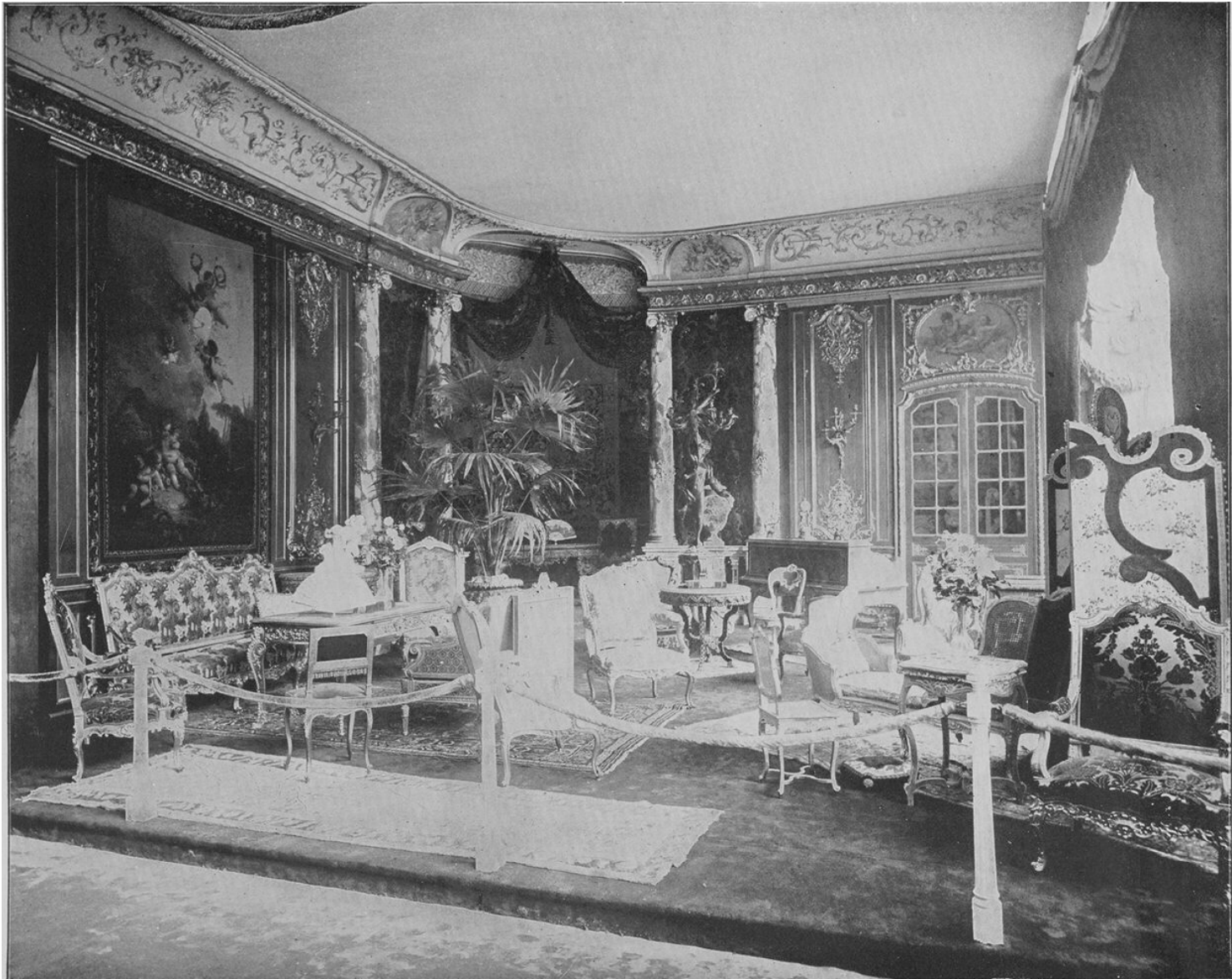


ECLECTICISM

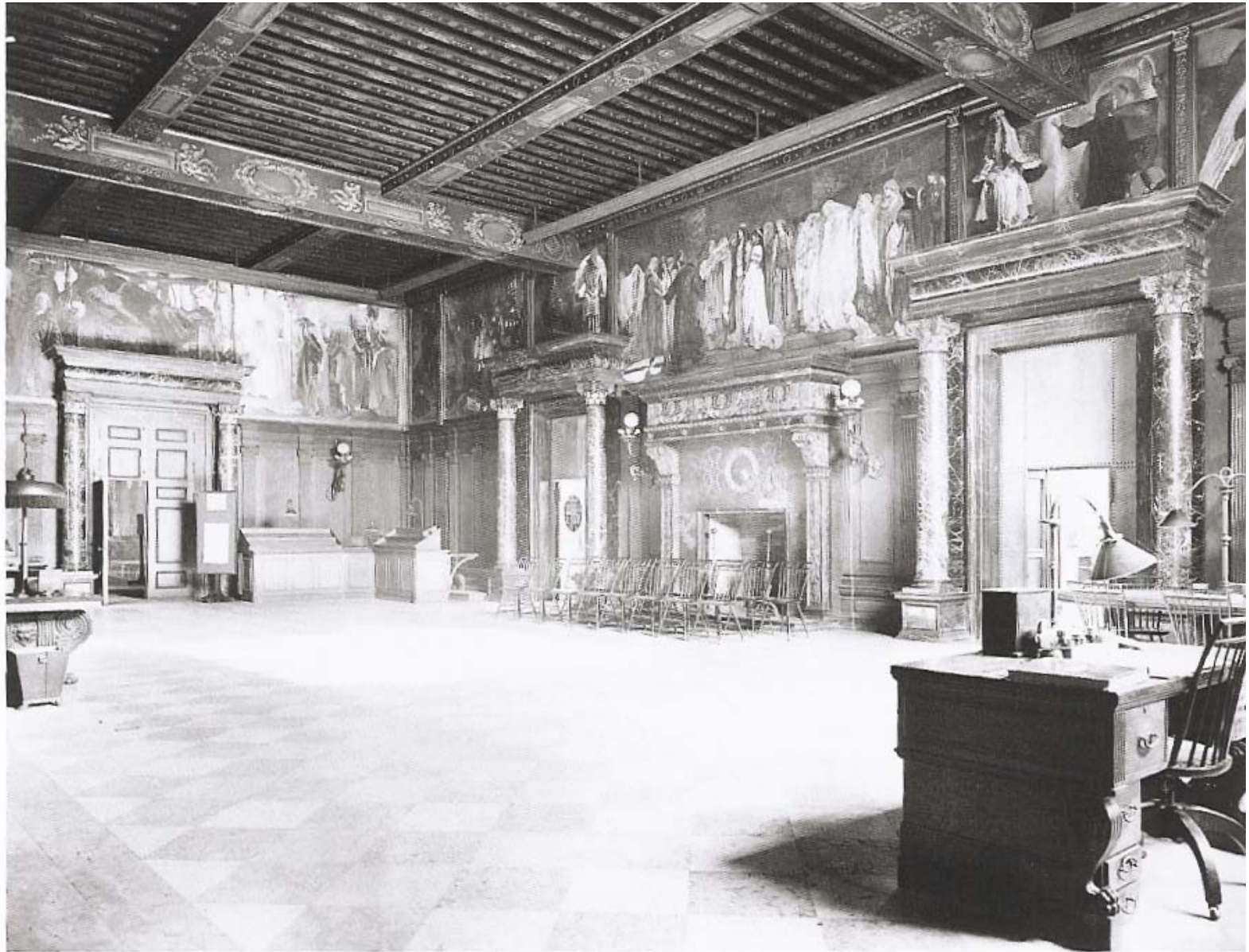


Grand Loggia of the Machinery Hall

ECLECTICISM



French furniture on display



McKim, Mead & White, Boston Public Library, 1895



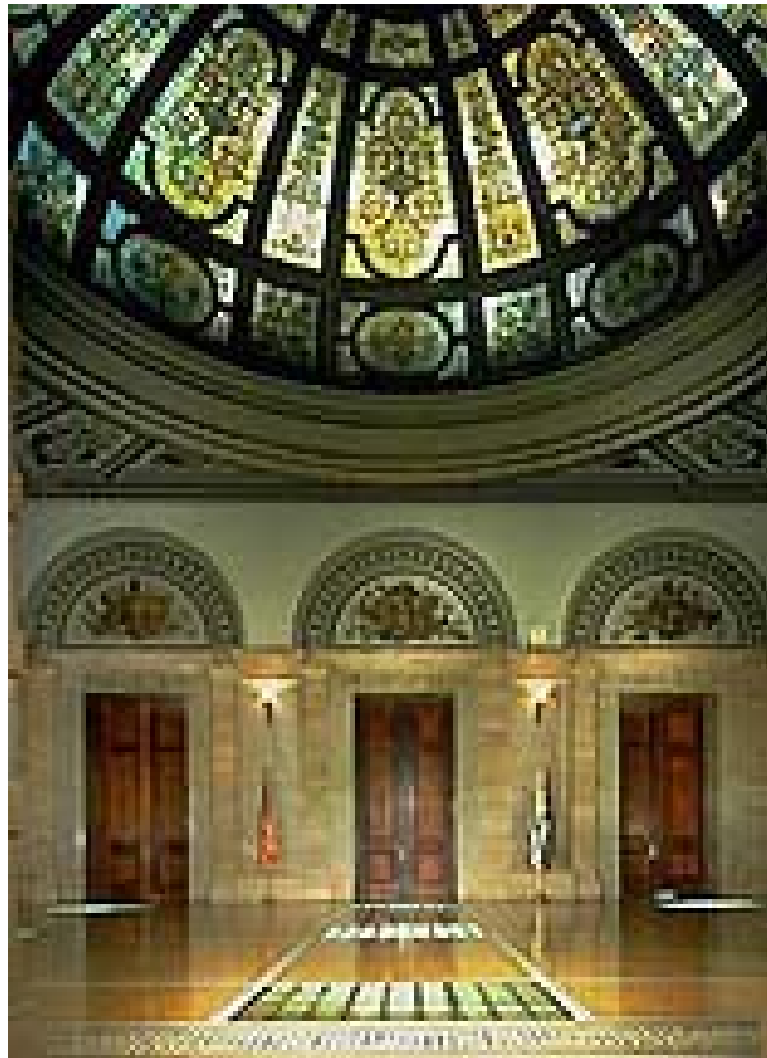
**Shepley, Rutan and Coolidge, Chicago Cultural Center
(formerly Chicago Public Library, 1897)**



**Shepley, Rutan and Coolidge, Chicago Cultural Center
(formerly Chicago Public Library, 1897)**



**Shepley, Rutan and Coolidge, Chicago Cultural Center
(formerly Chicago Public Library, 1897)**



**Shepley, Rutan and Coolidge, Chicago Cultural Center
(formerly Chicago Public Library, 1897)**



Carriere and Hastings, New York Public Library, 1911



Cass Gilbert, Woolworth Building Lobby, New York, 1913

ECLECTICISM

- Eclecticism: Chateausque Style
 - Richard Morris Hunt
 - Biltmore, Asheville, North Carolina
 - 1895



Biltmore, Asheville, North Carolina, Richard Morris Hunt, 1895

ECLECTICISM

- Eclecticism

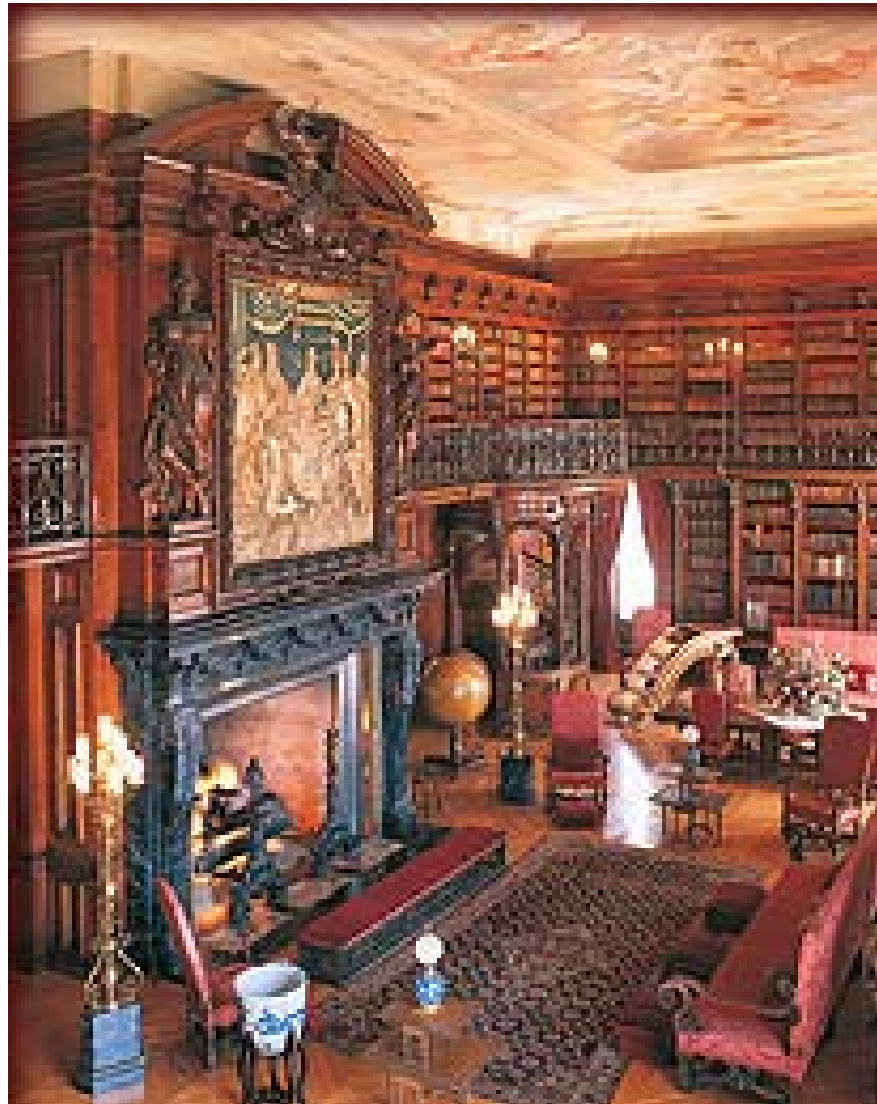
- Richard Morris Hunt

- Biltmore, Asheville, North Carolina

- 1895



Richard Morris Hunt, by John Singer Sargent, 1895



Biltmore, Asheville, North Carolina, Richard Morris Hunt, 1895

ECLECTICISM

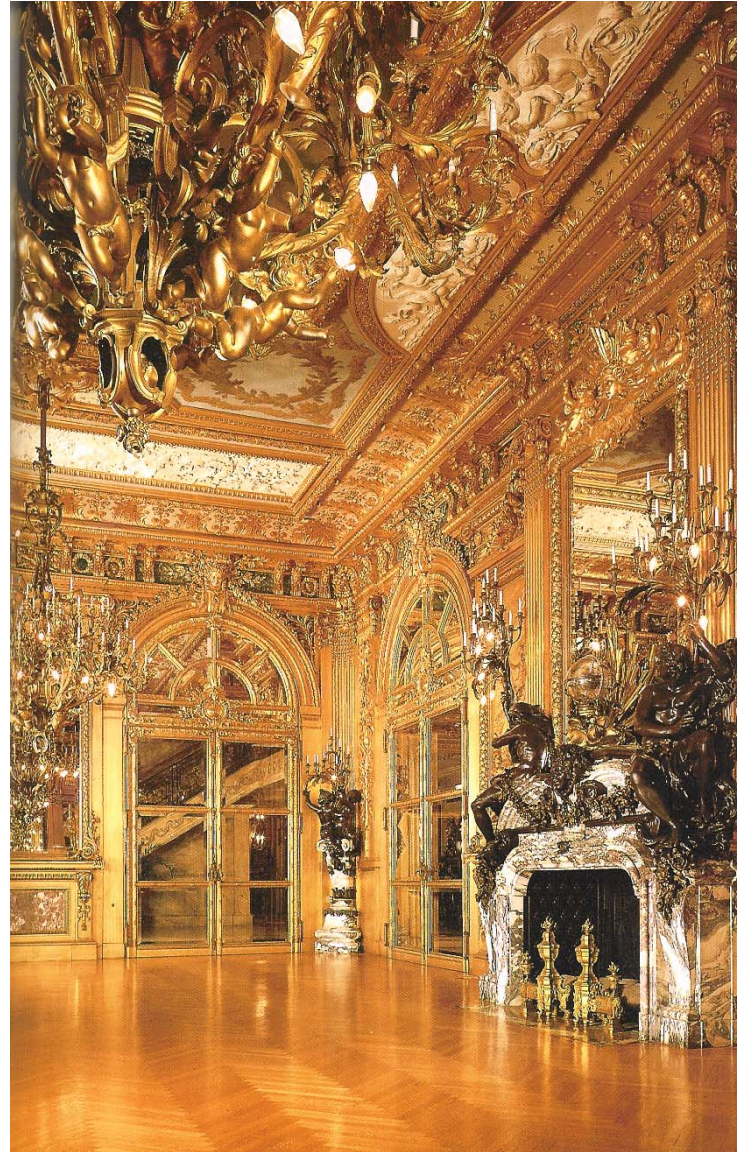
- Eclecticism: Second Empire Style
 - Richard Morris Hunt
 - Chateau-sur-Mer, Newport, Rhode Island
 - 1870s



Chateau-sur-Mer, Newport, Rhode Island, enlarged by Richard Morris Hunt, 1870s

ECLECTICISM

- The Victorian Era
 - Richard Morris Hunt
 - Marble House, Newport, Rhode Island
 - 1892



Marble House, Newport, Rhode Island, Richard Morris Hunt, 1892

ECLECTICISM

- Eclectic: Renaissance Revival
 - Richard Morris Hunt
 - The Breakers, Newport, Rhode Island
 - 1893



**The Breakers, Newport, Rhode Island, 1893,
Richard Morris Hunt**

ECLECTICISM

- Eclecticism: Renaissance Revival
 - Horace Trumbauer
 - The Elms, Newport, Rhode Island
 - 1901



The Elms, Newport, Rhode Island, Horace Trumbauer 1901

ECLECTICISM



The Elms, Newport, Rhode Island, Horace Trumbauer 1901 – Grand Staircase by Jules Allard

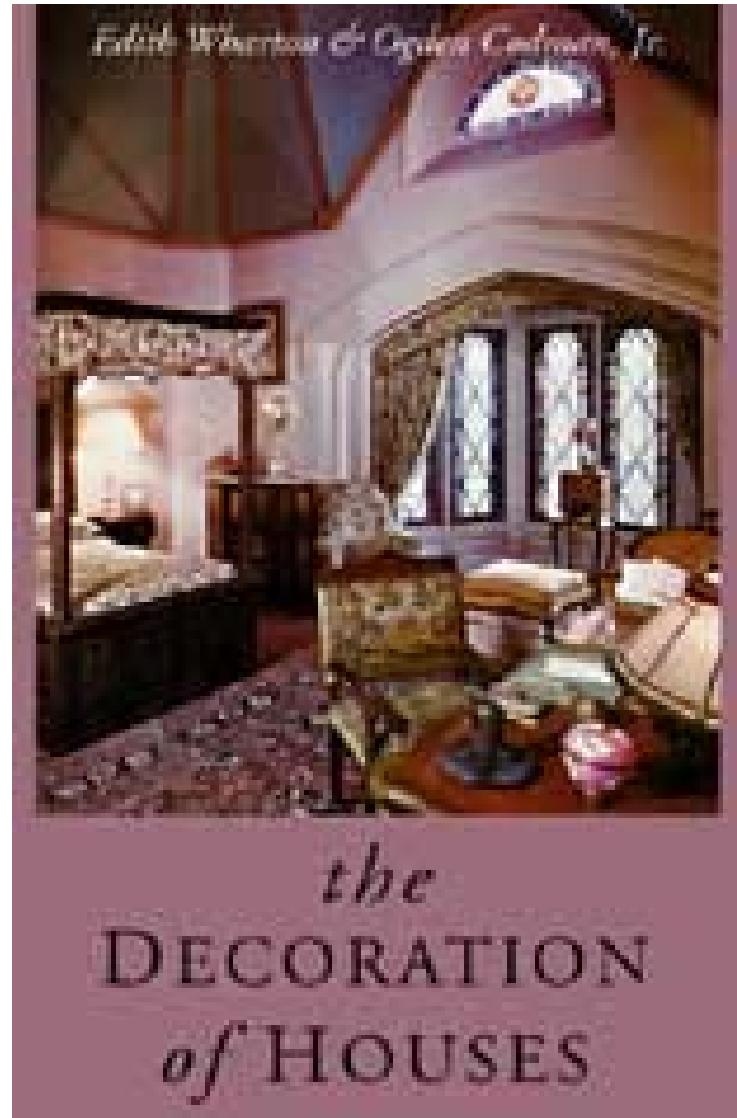
ECLECTICISM

- The Victorian Era
 - McKim, Mead and White
 - Rosecliff, Newport, Rhode Island
 - 1902



Rosecliff, Newport, Rhode Island, Stanford White, 1902

***The Decoration of
Houses* by Edith
Wharton and Ogden
Codman, 1897**





**Edith Newbold Jones
(later Edith Wharton) at age 18 (1880)**



Edith Wharton) at the Mount, 1905



Edith Wharton's The Mount, Lenox Massachusetts, 1905



Edith Wharton's The Mount, Drawing Room, 1905

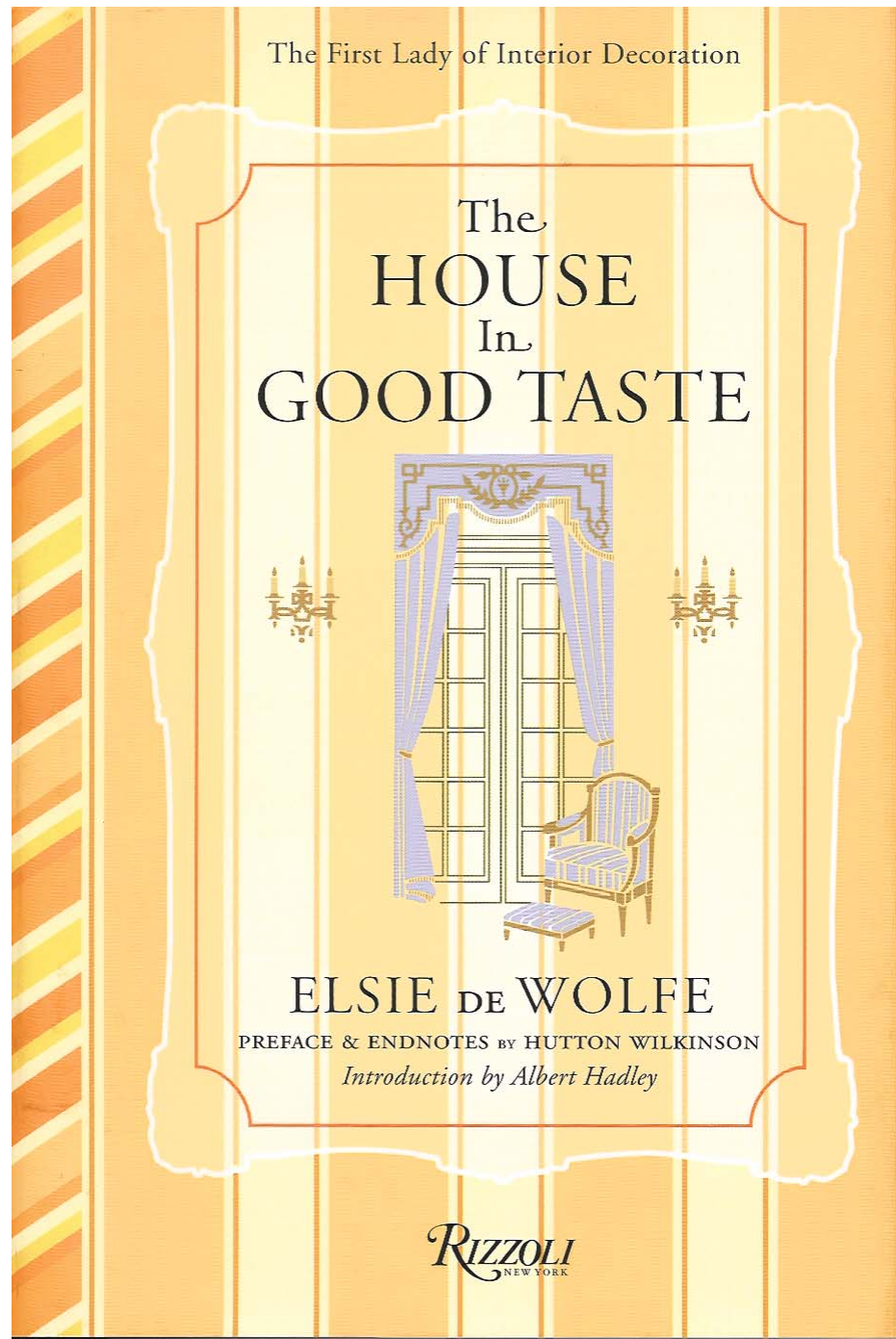


Edith Wharton's The Mount, Stair Hall, 1905



Edith Wharton's The Mount, Library, 1905

***The House in Good
Taste* by Elsie de
Wolfe, 1913**



"It is the personality of the mistress that the home expresses. Men are forever guests in our homes, no matter how much happiness they may find there."



Elsie de Wolfe at 28 in 1894

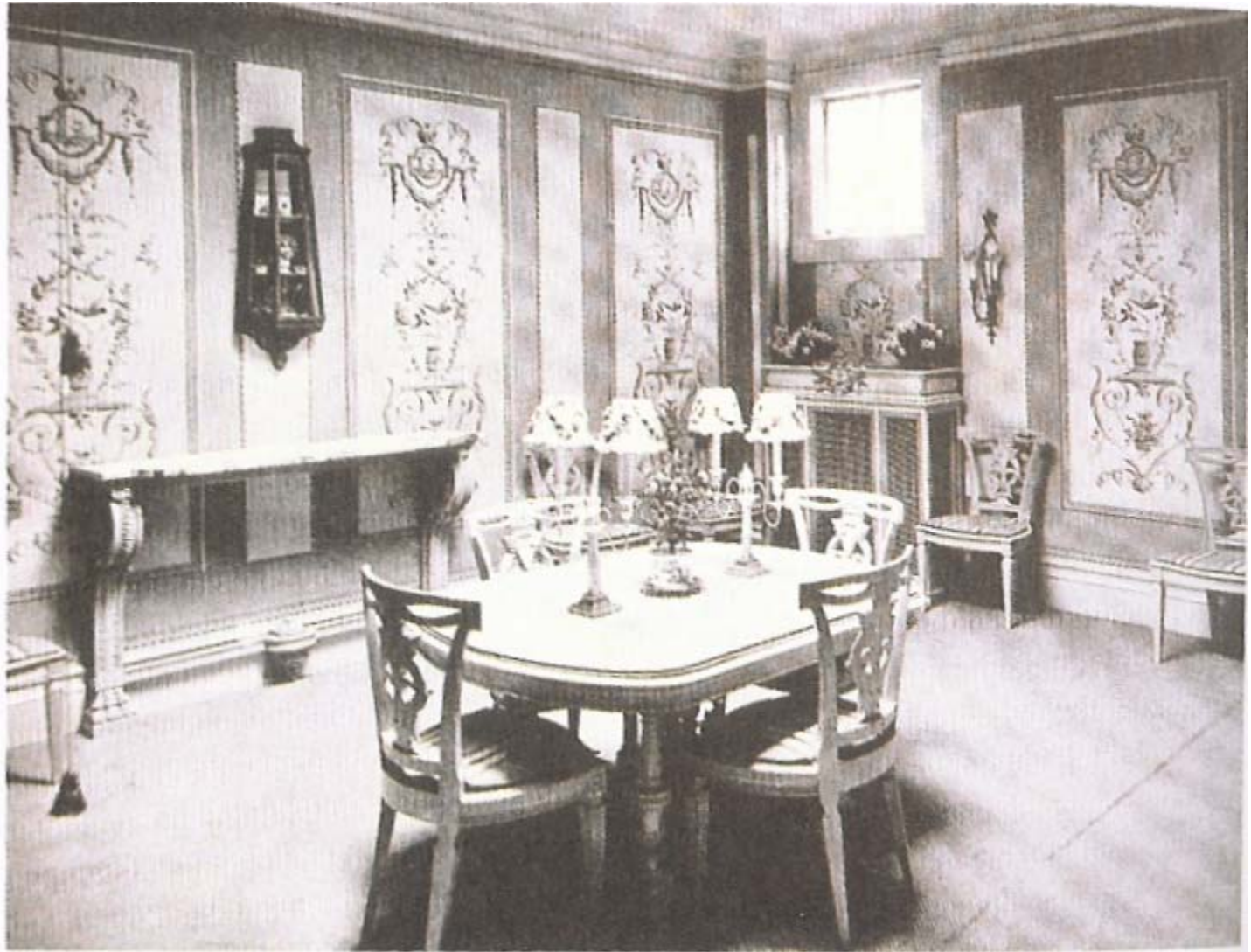


A room designed by Elsie de Wolfe. The mauve and pale green is an unusual combination rarely seen today, but Elsie liked to combine greens, purples, and lavenders. (Another color scheme that she liked was blue, rose, and cream.) The room features many of Elsie's favorite things: a writing desk, abundant light sources (chandelier, lamp on desk, and sconce on wall), seating situated for ease of conversation, a stool for putting ones feet up on (or for someone to sit on), and chintz curtains.

In 1933 the great interior designer Elsie de Wolfe traveled to Greece with some friends and, like most visitors, was overwhelmed by her first sight of the Acropolis: "It's beige!" she cried. "My color!"



Elsie de Wolfe, Living Room of House in Morristown, New Jersey, 1913



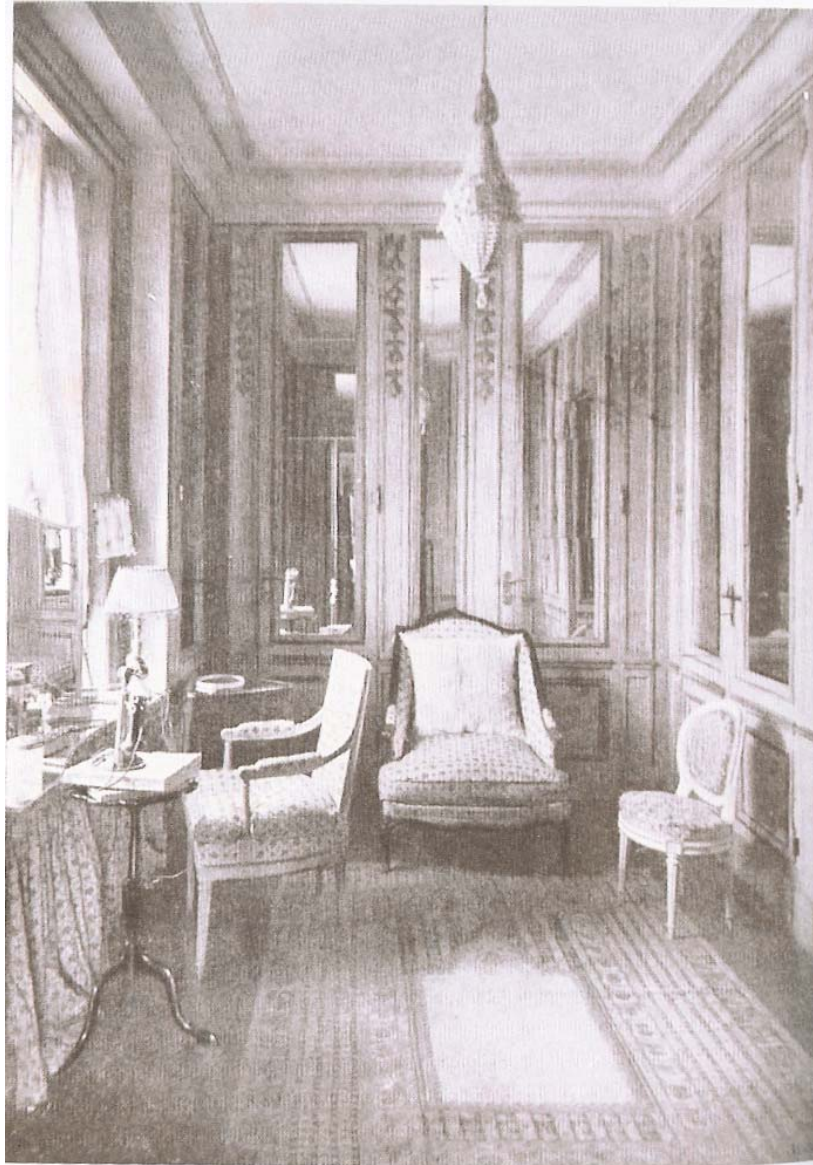
The private dining room in the Colony Club



A Colony Club bedroom



Miss Morgan's Louis XVI lit de repos



Miss Anne Morgan's Louis XVI dressing room



Miss Morgan's Louis XVI boudoir



The staircase in the Bayard Thayer House



A fine old console in the Villa Trianon



McKim, Mead & White, Pennsylvania Station, New York, 1910



SS France, 1910



Ralph Adams Cram, St. Thomas's Church, New York, 1913



Sir Edwin Lutyens



Sir Edwin Lutyens, Tigbourne Court, 1899



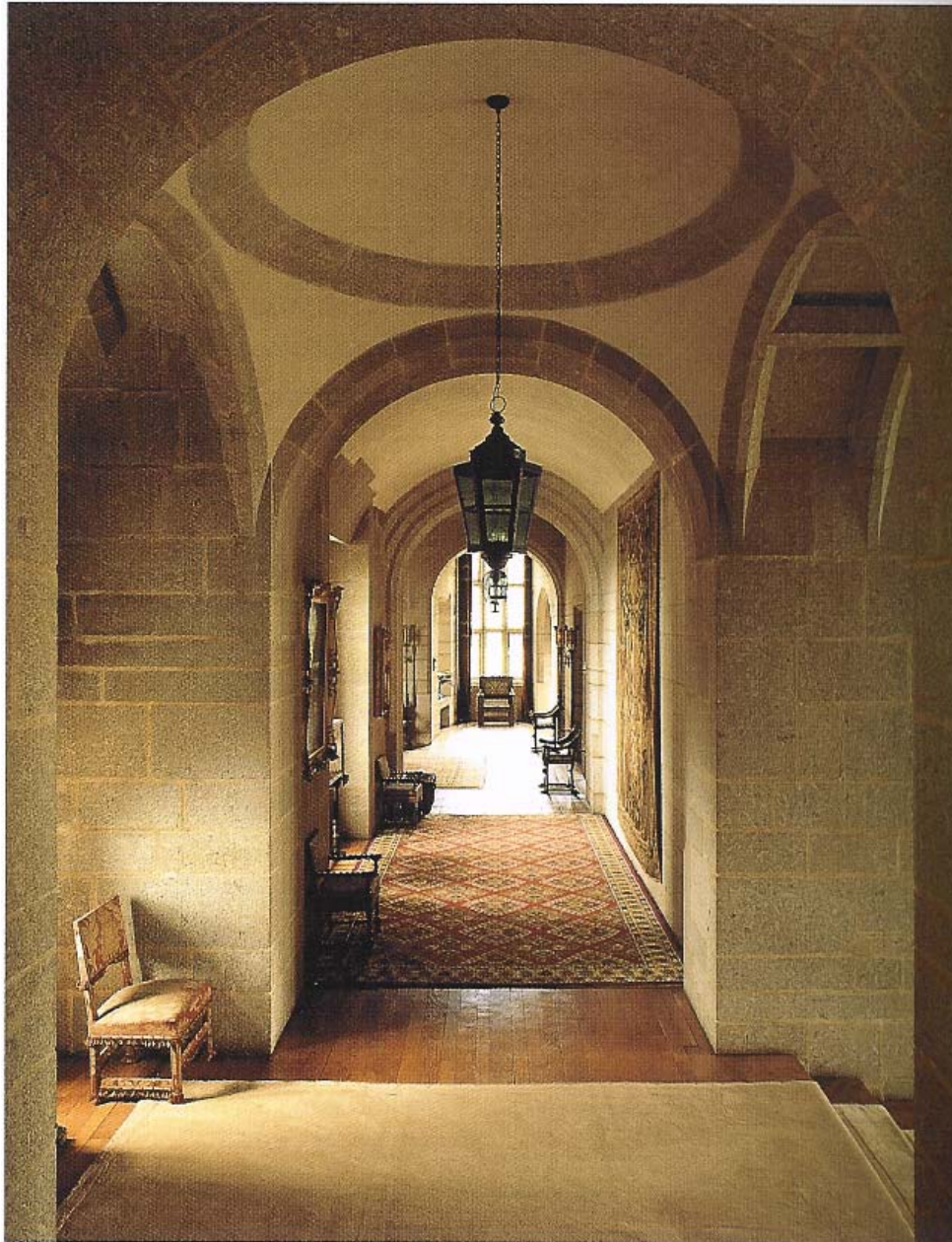
Sir Edwin Lutyens, The Viceroy House, 1922



**Sir Edwin
Lutyens,
Nashdom,
1909**

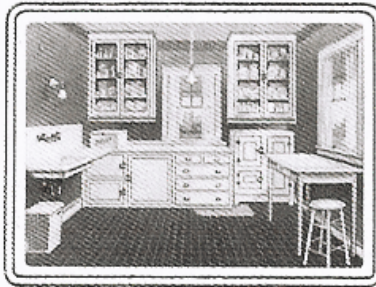


Sir Edwin Lutyens, Marshcourt, 1904

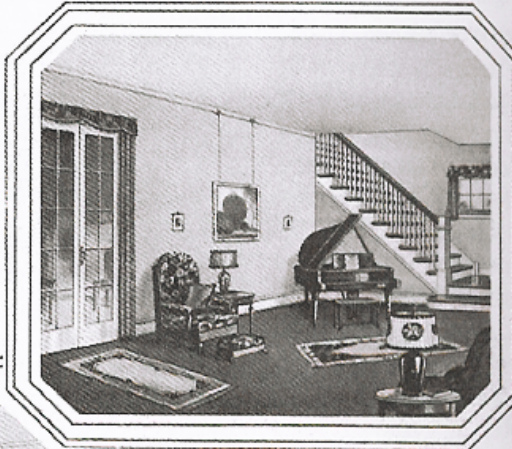


**Sir Edwin
Lutyens,
Castle
Drogo, 1925**

THE PURITAN INTERIORS



THE KITCHEN



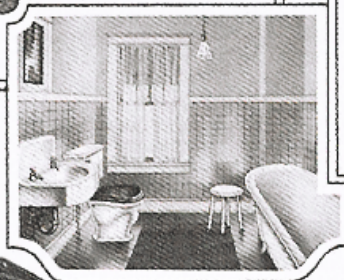
THE LIVING ROOM



THE DINING ROOM



THE BEDROOM



THE BATHROOM



All of the furnishings shown above were taken from our Big General Catalog, "The Thrift Book of a Nation."

Gentlemen:- I have just recently completed building one of your "Honor Bilt" Modern Homes, and want to tell you how well I am satisfied. I saved over \$2,000.00 in building this house, and when it was completed I was able to get a mortgage for more than the construction cost. It certainly is a substantial house, and no one will make a mistake in buying or building an "Honor Bilt" Modern Home. You might also like to know that it is furnished with Sears-Roebuck rugs, furniture and curtains, also wall paper and fixtures, and in buying my furniture from you I saved over half. You may refer anyone to me as I know they will be pleased as well as satisfied in dealing with your company. (Signed) A. W. Fischer, Eastwood, Ohio

Sears
Catalog ad
for pre-fab
house
showing
"colonial"
interiors,
1926



Illustration of a “colonial” bedroom from a Sears Catalog ad for pre-fab house, 1926



Paul Cret, Folger Shakespearean Library, Washington, D.C., 1932



Moscow Train Station, 1949