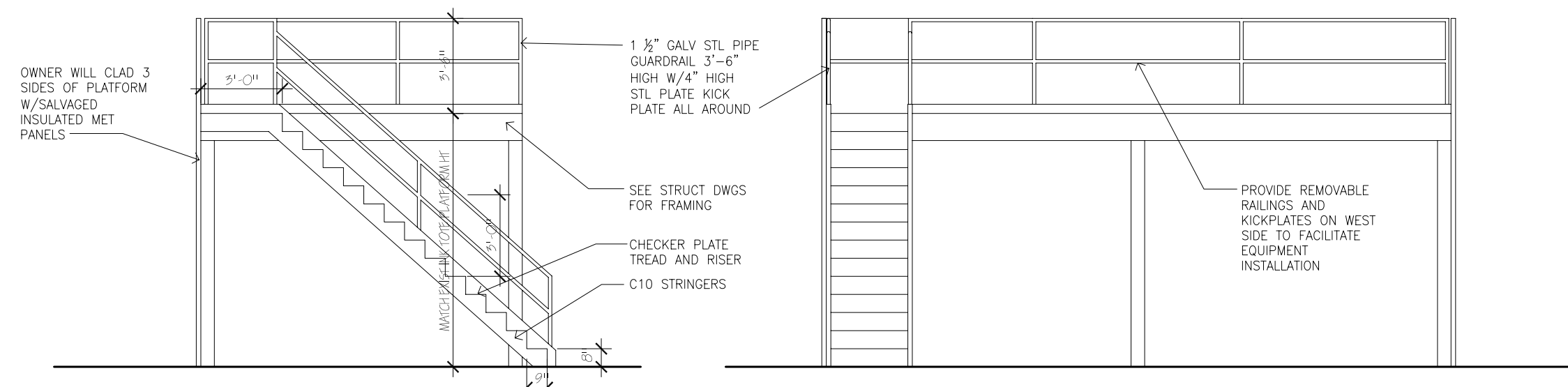
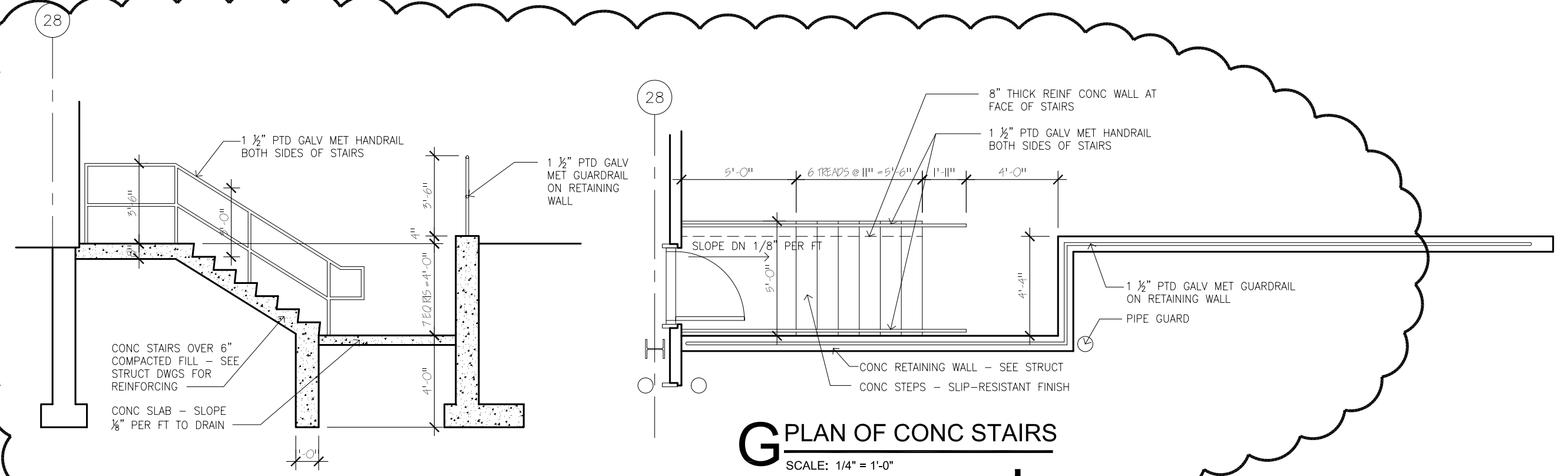


THIS DRAWING IS THE PROPERTY OF TMS MECHANICAL SYSTEMS AND IS TO BE RETURNED UPON REQUEST. IT CONTAINS CONFIDENTIAL INFORMATION WHICH MUST NOT BE DISCLOSED TO ANYONE OR USED FOR CONSTRUCTION WITHOUT WRITTEN CONSENT. IT IS LOANED WITH THE EXPRESS AGREEMENT THAT THE DRAWING AND INFORMATION THEREON WILL NOT BE REPRODUCED, COPIED, OR OTHERWISE DISSEMINATED IN ANY MANNER OR FOR ANY PURPOSE WITHOUT THE WRITTEN CONSENT OF TMS MECHANICAL SYSTEMS AND IS TO BE RETURNED UPON REQUEST. THE ACCEPTANCE OF THIS DRAWING CONSTITUTES ACCEPTANCE OF THE FOREGOING AGREEMENT.



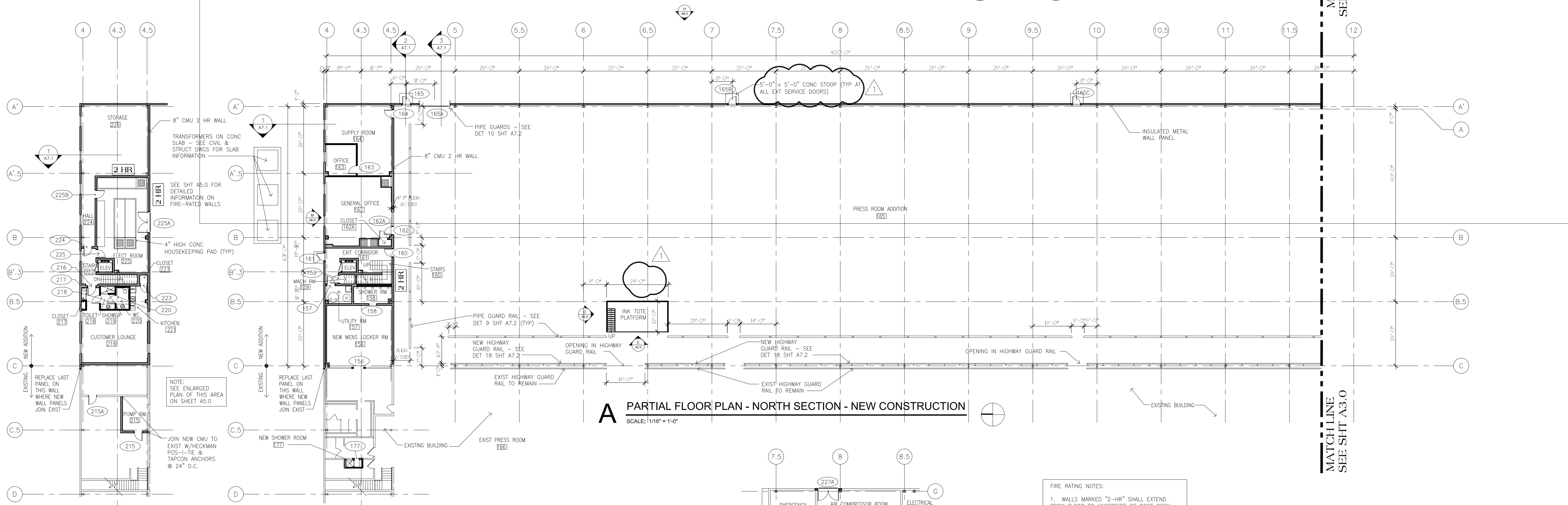
**D INK TOTE PLATFORM NORTH ELEV**  
SCALE: 1/4" = 1'-0"

**E INK TOTE PLATFORM WEST ELEV**  
SCALE: 1/4" = 1'-0"



**F SECT THRU CONC STAIRS**  
SCALE: 1/4" = 1'-0"

**G PLAN OF CONC STAIRS**  
SCALE: 1/4" = 1'-0"



**A PARTIAL FLOOR PLAN - NORTH SECTION - NEW CONSTRUCTION**  
SCALE: 1/16" = 1'-0"

**B MEZZANINE PLAN - NEW CONSTRUCTION**  
SCALE: 1/16" = 1'-0"

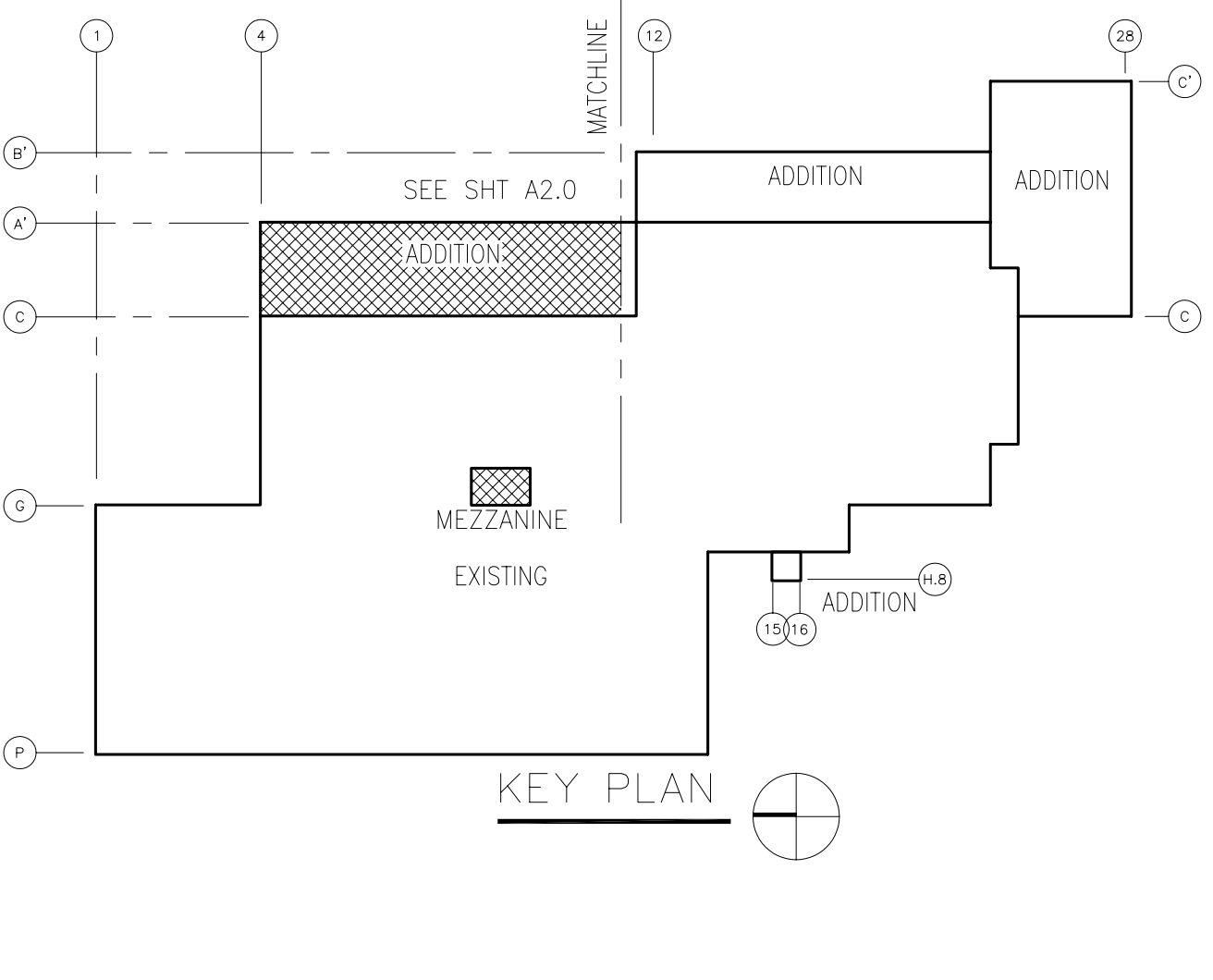
**C PARTIAL FLOOR PLAN EXIST MEZZANINE - NEW CONSTRUCTION**  
SCALE: 1/16" = 1'-0"

**FIRE RATING NOTES:**  
1. WALLS MARKED "2-HR" SHALL EXTEND FROM FLOOR TO UNDERSIDE OF ROOF DECK AND SHALL COMPLY WITH UL DESIGN U905 (8" CMU LAID IN A FULL BED OF MORTAR)  
2. COLUMNS SUPPORTING MEZZANINE SUPPORTING MEZZANINE SHALL BE 2-HR PROTECTED WITH GYP BO ENCLOSURE COMPLYING WITH UL DESIGN X517 (SEE DET 23 SHT A7.2)  
BEAMS SUPPORTING MEZZANINE SHALL BE 2-HR PROTECTED WITH SPRAYED FIREPROOFING COMPLYING WITH UL DESIGN N814 (1/2" THICK)

ROOM NO.	ROOM NAME	FIRST FLOOR						BASE	FLOOR	FLOOR COVERING	CEILING	CEILING HEIGHT	REMARKS		
		NORTH	SOUTH	EAST	WEST	FINISH	FINISH								
156	MENS NEW LOCKER ROOM	METAL	P	CMU	P	CMU	P	CMU	P	VBC	CONC	VCT-1	APC-2	9'-0"	NOTES 1 & 2 BELOW
157	UTILITY ROOM	METAL	PREFINISHED	CMU	P	CMU	P	CMU	P	VBC	CONC	VCT-1	APC-1	9'-0"	NOTE 1 BELOW
158	SHOWER ROOM	CMU	PREFINISHED	CMU	PREFINISHED	CMU	PREFINISHED	CMU	PREFINISHED	CMU	PREFINISHED	CMU	PREFINISHED	CMU	PREFINISHED
159	MACHINE ROOM	CMU	P	CMU	P	CMU	P	CMU	P	CMU	P	CMU	P	CMU	P
160	STAIRS	CMU	P	CMU	P	CMU	P	CMU	P	CMU	P	CMU	P	CMU	P
161	EXIT CORRIDOR	CMU	P	CMU	P	CMU	P	CMU	P	CMU	P	CMU	P	CMU	P
162	GENERAL OFFICE	DW	P	DWF	P	DW	P	DWF	P	VBC	CONC	VCT-1	APC-1	9'-0"	NOTES 1 & 3 BELOW
162A	CLOSET	DW	P	DWF	P	DW	P	DWF	P	VBC	CONC	VCT-1	APC-1	9'-0"	NOTES 1 & 3 BELOW
163	OFFICE	DW	P	DWF	P	DW	P	DWF	P	VBC	CONC	VCT-1	APC-1	9'-0"	NOTE 1 BELOW
164	SUPPLY ROOM	METAL	PREFINISHED	CMU	P	METAL	PREFINISHED	DW	P	VBC	CONC	SEAL	APC-1	9'-0"	NOTE 1 BELOW
165	PRESS ROOM ADDITION	CMU	P	CMU	P	METAL	PREFINISHED	CMU	P	CMU	P	CMU	P	CMU	P
166	EXISTING PRESS ROOM	CMU	P	CMU	P	METAL	PREFINISHED	CMU	P	CMU	P	CMU	P	CMU	P
167	EXISTING BINDERY	CMU	P	CMU	P	METAL	PREFINISHED	CMU	P	CMU	P	CMU	P	CMU	P
168	EXISTING BINDERY	CMU	P	CMU	P	METAL	PREFINISHED	CMU	P	CMU	P	CMU	P	CMU	P
169	WAREHOUSE ADDITION	CMU	P	CMU	P	METAL	PREFINISHED	CMU	P	CMU	P	CMU	P	CMU	P
170	SHIPPING ADDITION	CMU	P	CMU	P	METAL	PREFINISHED	CMU	P	CMU	P	CMU	P	CMU	P
171	LUNCH ROOM	DWF	P	DWF	P	DW	P	DWF	P	VBC	CONC	VCT-1	APC-1	9'-0"	NOTE 3 BELOW
172	BOOK ROOM	CMU	P	CMU	P	METAL	PREFINISHED	CMU	P	CMU	P	CMU	P	CMU	P
173	COOKING ROOM	CMU	P	CMU	P	METAL	PREFINISHED	CMU	P	CMU	P	CMU	P	CMU	P
174	SHIPPING OFFICE	DWF	P	DWF	P	DW	P	DWF	P	VBC	CONC	VCT-1	APC-1	9'-0"	NOTE 3 BELOW
175	POST OFFICE	DWF	P	DWF	P	DW	P	DWF	P	VBC	CONC	VCT-1	APC-1	9'-0"	NOTE 3 BELOW
176	BOOK ADDITION	METAL	PREFINISHED	METAL	PREFINISHED	CMU	PREFINISHED	CMU	PREFINISHED	CMU	PREFINISHED	CMU	PREFINISHED	CMU	PREFINISHED
177	SHOWER	CMU	CWT-2	CMU	CWT-2	CMU	CWT-2	CMU	CWT-2	CWT-2	CONC	CFT-2	DWR	8'-0"	DWR SOFFIT

ROOM NO.	ROOM NAME	MEZZANINE						BASE	FLOOR	FLOOR COVERING	CEILING	CEILING HEIGHT	REMARKS		
		NORTH	SOUTH	EAST	WEST	FINISH	FINISH								
215	PUMP ROOM	CMU	P	CMU	P	CMU	P	CMU	P	CMU	P	CMU	P	CMU	P
216	CUSTOMER LOUNGE	DWF	P	DWF	P	DW	P	DWF	P	VBC	CONC	CPT	DW	10'-0"	NOTE 3 BELOW
217	CLOSET	DWF	P	DWF	P	DW	P	DWF	P	VBC	CONC	CPT	DW	8'-0"	NOTE 3 BELOW
218	TOILET	DWR	P	DWR	P	DWR	P	DWR	P	DWR	P	DWR	P	DWR	P
219	SHOWER	TBB	CTW-2	TBB	CTW-2	TBB	CTW-2	TBB	CTW-2	TBB	CTW-2	TBB	CTW-2	TBB	CTW-2
220	WC	DWR	P	DWR	P	DWR	P	DWR	P	DWR	P	DWR	P	DWR	P
221	KITCHEN	DWF	P	DWF	P	DW	P	DWF	P	VBC	CONC	VCT-1	APC-1	9'-0"	NOTE 3 BELOW
222	STAIRS	DWF	P	DWF	P	DW	P	DWF	P	VBC	CONC	VCT-1	APC-1	9'-0"	NOTE 3 BELOW
223	CLOSET	DWF	P	DWF	P	DW	P	DWF	P	VBC	CONC	VCT-1	APC-1	9'-0"	NOTE 3 BELOW
224	HALL	METAL	PREFINISHED	CMU	P	CMU	P	CMU	P	CMU	P	CMU	P	CMU	P
225	ELECT ROOM	CMU	P	CMU	P	CMU	P	CMU	P	CMU	P	CMU	P	CMU	P
226	STORAGE	METAL	PREFINISHED	CMU	P	METAL	PREFINISHED	CMU	P	CMU	P	CMU	P	CMU	P
227	AIR COMPRESSOR ROOM	CMU	P	CMU	P	METAL	PREFINISHED	CMU	P	CMU	P	CMU	P	CMU	P
228	EXISTING CORRIDOR	CMU	P	CMU	P	CMU	P	CMU	P	CMU	P	CMU	P	CMU	P

**ABBREVIATIONS (SEE SPECS FOR DESCRIPTIONS OF MATERIALS)**  
 APC-1 = SUSPENDED ACoustICAL PANEL TYPE 1  
 APC-2 = SUSPENDED ACoustICAL PANEL TYPE 2  
 CFT-1 = CERAMIC FLOOR TILE TYPE 1 (QUARRY TILE)  
 CFT-2 = CERAMIC FLOOR TILE TYPE 2  
 CFT-3 = CERAMIC FLOOR TILE TYPE 3 (QUARRY TILE)  
 CTW-1 = CERAMIC WALL TILE TYPE 1  
 CTW-2 = CERAMIC WALL TILE TYPE 2  
 CTW-3 = CERAMIC WALL TILE TYPE 3  
 DW = DRYWALL (PAINTED)  
 DWF = WATER-RESISTANT DRYWALL (PAINTED)  
 DWR = DRYWALL, FURRED OUT OVER CMU (PAINTED)  
 EXIST = EXISTING FINISH  
 EPP = EPOXY PAINT (HIGH PERFORMANCE COATING)  
 EXP CONC = EXPOSED CONCRETE  
 HP = HIGH POINT  
 LP = LOW POINT  
 P = PAINT  
 PP = PATCH & PAINT  
 PFSB = PRECAST TERRAZZO SHOWER BASIN  
 SC = SEALED CONCRETE  
 STRUC = EXPOSED STRUCTURE  
 TBB = TILE BACKER BOARD  
 VBC = 4" COVED VINYL BASE  
 VCT-1 = VINYL COMPOSITION FLOOR TILE  
 VCT-2 = 4" STRAIGHT VINYL BASE  
 VCT-3 = VINYL COMPOSITION FLOOR TILE  
 --- = NONE - OPEN  
 --- = NONE - OPEN, PAINT NEW WORK TO MATCH ADJACENT  
 ALL OTHER ABBREVIATIONS ARE STANDARD



**KEY PLAN**

10-02-00	ISSUED FOR ADDENDUM NO. 5 & CONSTRUCTION	
10-02-00	ADDENDUM NO. 5	
09-13-00	ISSUED FOR BIDDING AND PERMIT	
04-24-00	ISSUED FOR BIDDING	
04-14-00	ISSUED FOR OWNER REVIEW	
REV.	DATE	DESCRIPTION
FLOOR PLAN - NORTH - NEW CONSTRUCTION		
<b>tms</b> PLANNERS DESIGNERS ENGINEERS		
2101 Hammond Drive Schaumburg, Illinois 60173		Phone: 847-397-2100 Fax: 847-397-8980
<b>BROWN PRINTING</b> PRESS ROOM, BINDERY AND WAREHOUSE EXPANSION		
11595 MCCONNELL ROAD WOODSTOCK, ILLINOIS		DWG. NO. <b>A2.0</b>
DWN. BY	FEH	SCALE 1/16" = 1'-0"
APP. BY	FEH	JOB NO. 6518/6523
CKD. BY	FEH	DATE 4/24/00