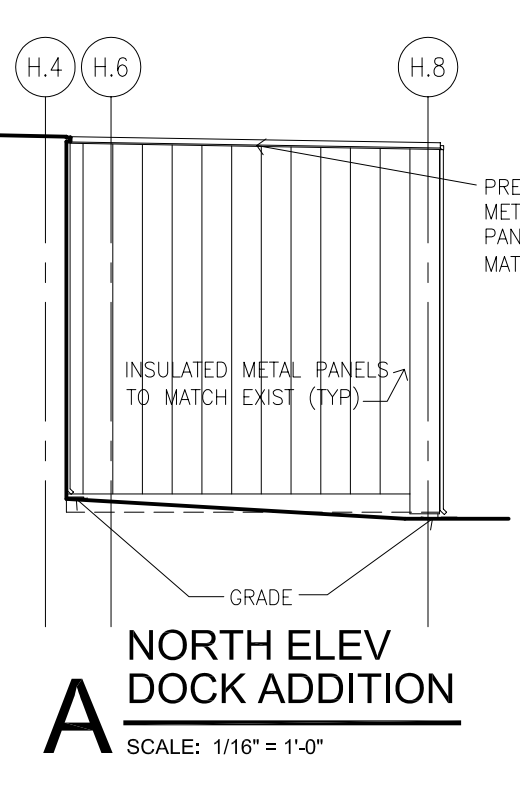
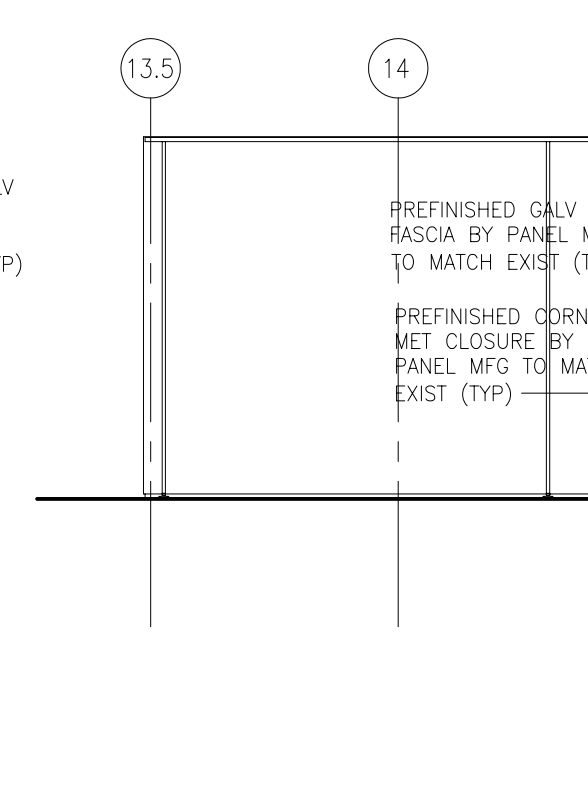


THIS DRAWING IS THE PROPERTY OF TNS PLANNERS DESIGNERS ENGINEERS AND IS TO BE RETURNED UPON REQUEST. IT CONTAINS CONFIDENTIAL INFORMATION WHICH MUST NOT BE DISCLOSED TO ANYONE OR USED FOR CONSTRUCTION WITHOUT WRITTEN CONSENT. IT IS GRANTED WITH THE EXPRESS AGREEMENT THAT THE DRAWING AND INFORMATION THEREON WILL NOT BE REPRODUCED, COPIED, OR TRANSMITTED IN ANY MANNER OR BY ANY MEANS, ELECTRONIC OR MECHANICAL, INCLUDING PHOTOCOPYING, RECORDING, OR BY ANY INFORMATION STORAGE AND RETRIEVAL SYSTEM, WITHOUT THE WRITTEN CONSENT OF TNS PLANNERS DESIGNERS ENGINEERS. THIS DRAWING IS FOR ANY OTHER PURPOSE WITHOUT WRITTEN CONSENT. THE ACCEPTANCE OF THIS DRAWING CONSTITUTES ACCEPTANCE OF THE FOREGOING AGREEMENT.

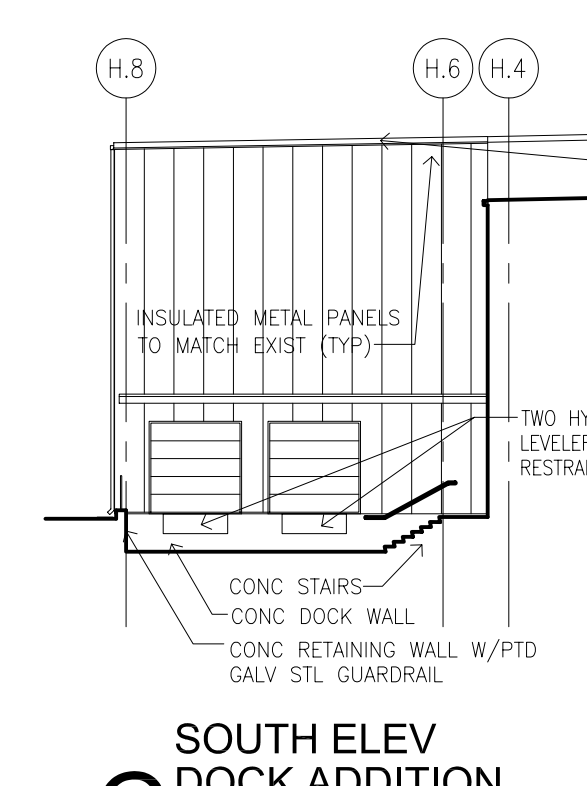
THIS SECTION OF METAL ROOF ON 1996 BUILDING TO BE REROOFED - PROVIDE 3" RIGID PLASTIC FLUTE FILLERS BETWEEN STANDING RIBS & 3/4" RIGID INSULATION OVER, MECHANICALLY FASTENED TO PURLINS @ 12" O.C. EACH WAY - PROVIDE NEW SINGLE PLY ROOFING MEMBRANE OVER - FM APPROVAL REQUIRED FOR ASSEMBLY - SEE ROOF PLAN FOR EXTENT OF REROOFING WORK



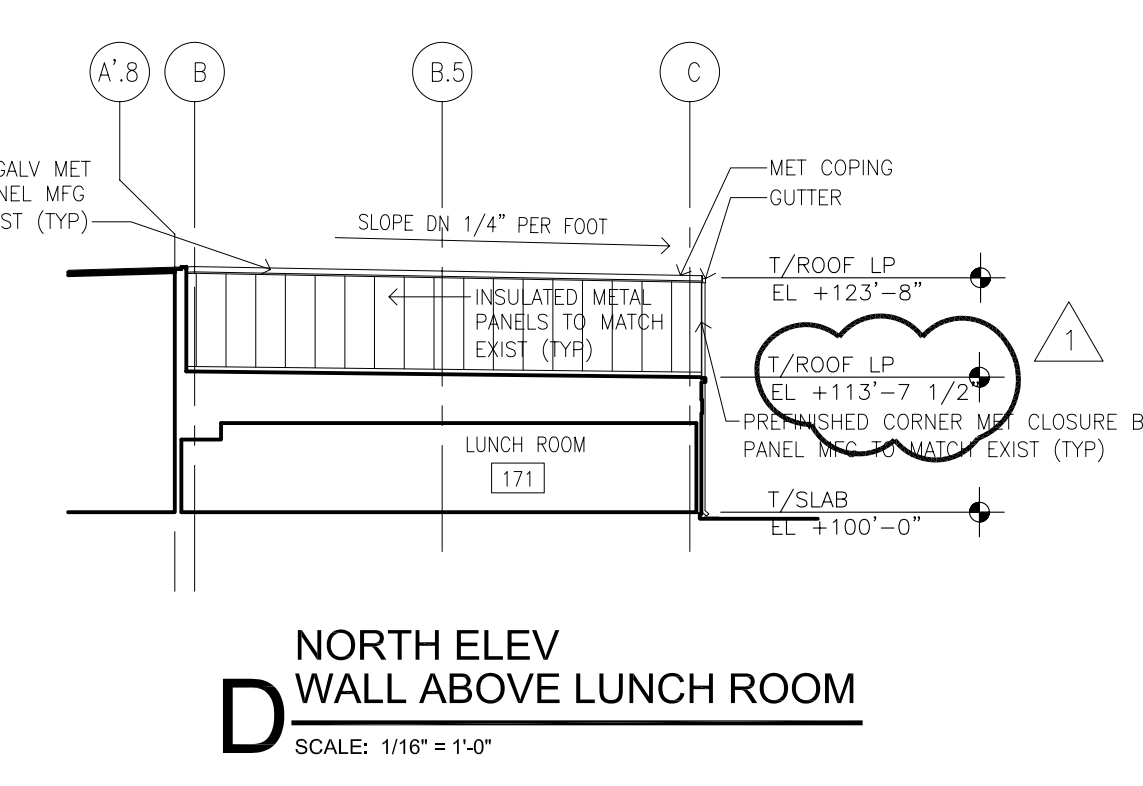
A NORTH ELEV DOCK ADDITION
SCALE: 1/16" = 1'-0"



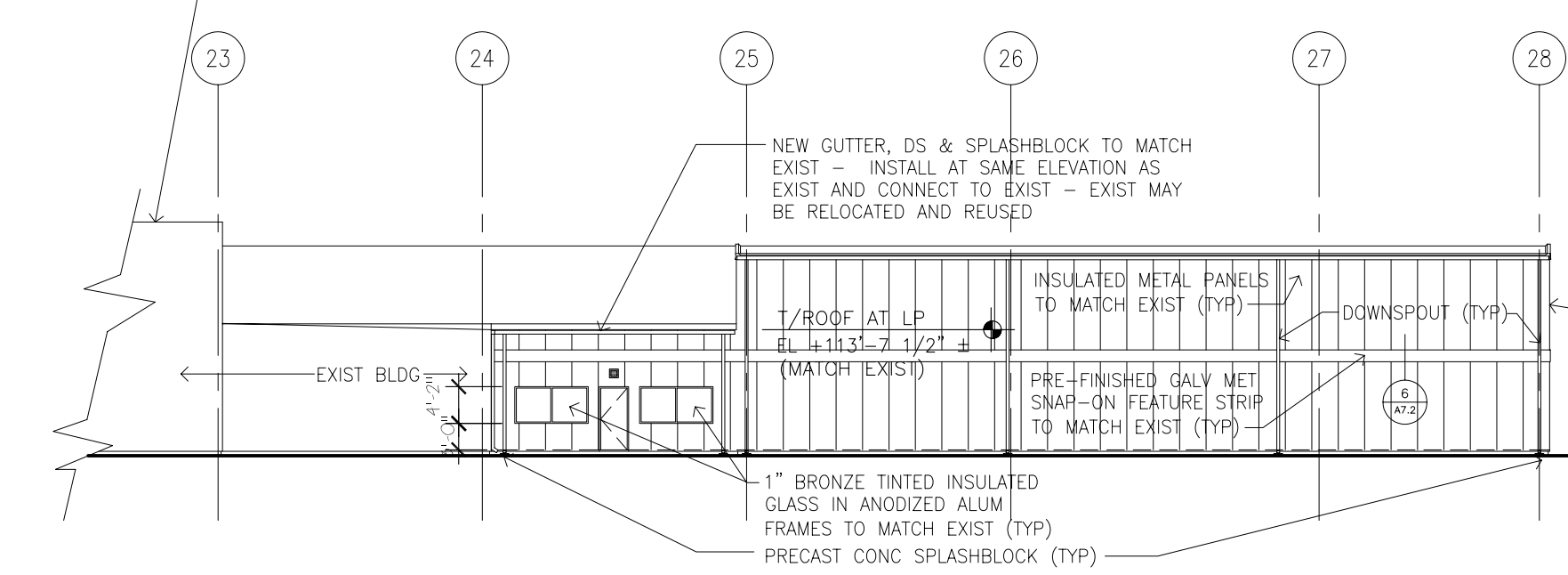
B WEST ELEV DOCK ADDITION
SCALE: 1/16" = 1'-0"



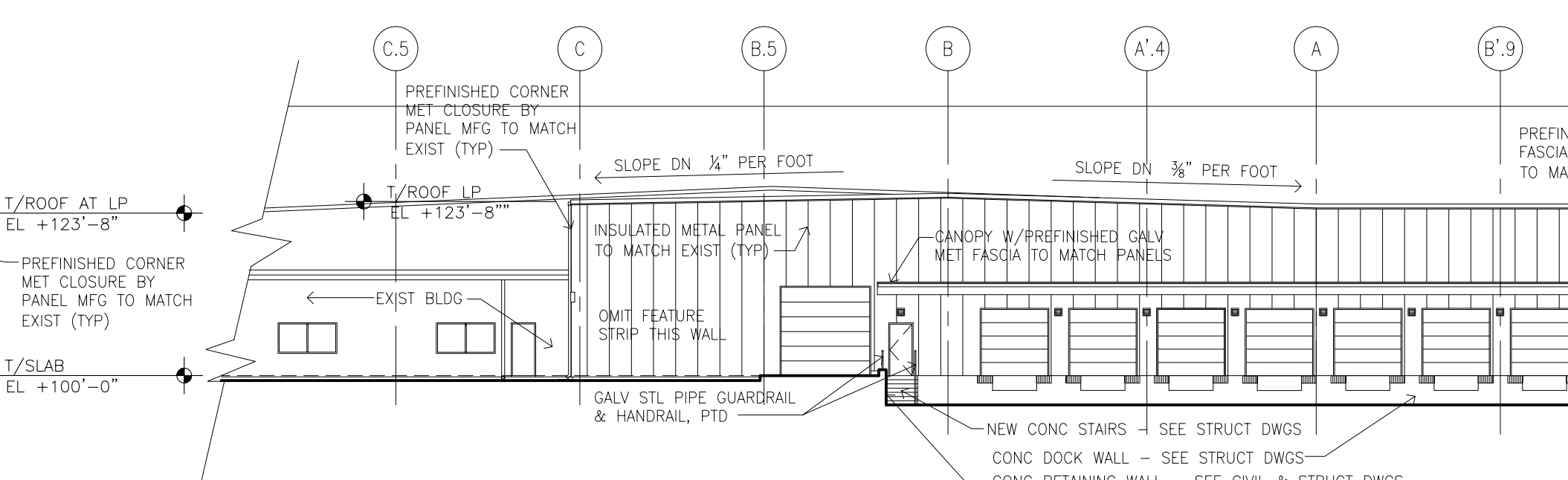
C SOUTH ELEV DOCK ADDITION
SCALE: 1/16" = 1'-0"



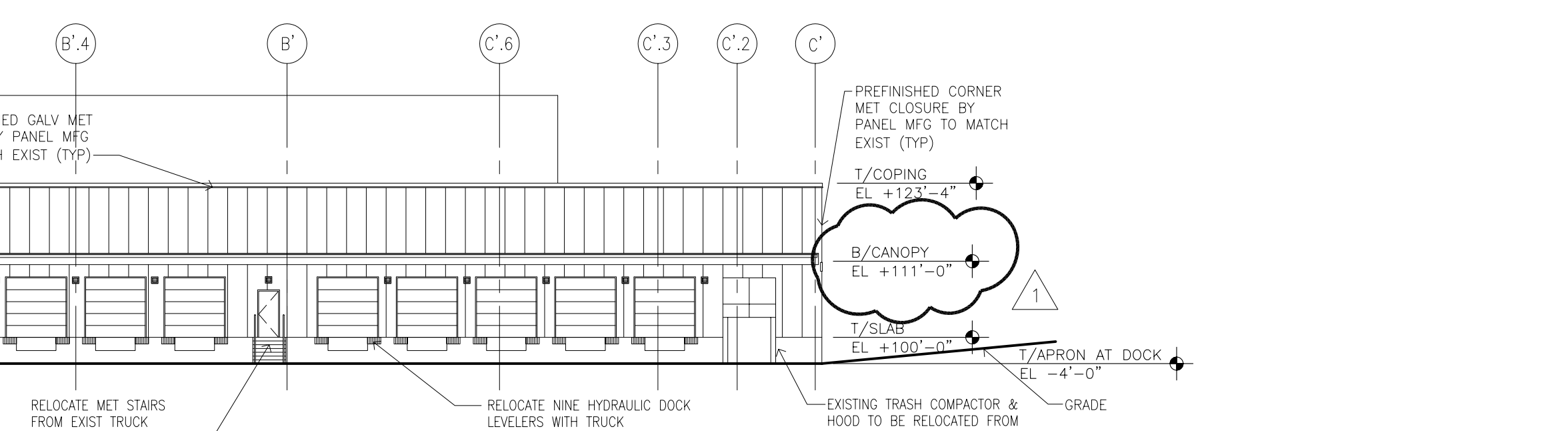
D NORTH ELEV WALL ABOVE LUNCH ROOM
SCALE: 1/16" = 1'-0"



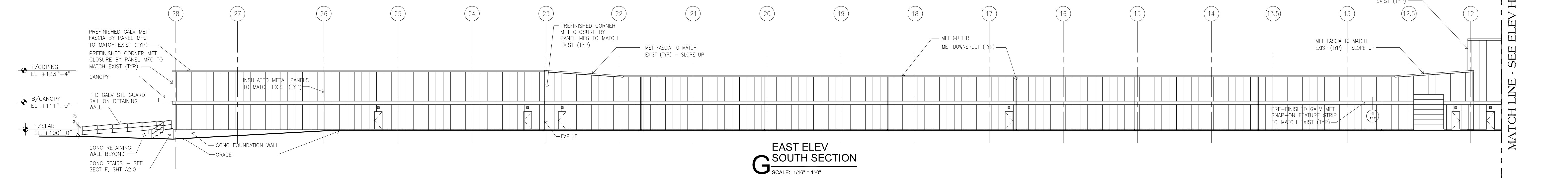
E WEST ELEV AT LUNCH ROOM
SCALE: 1/16" = 1'-0"



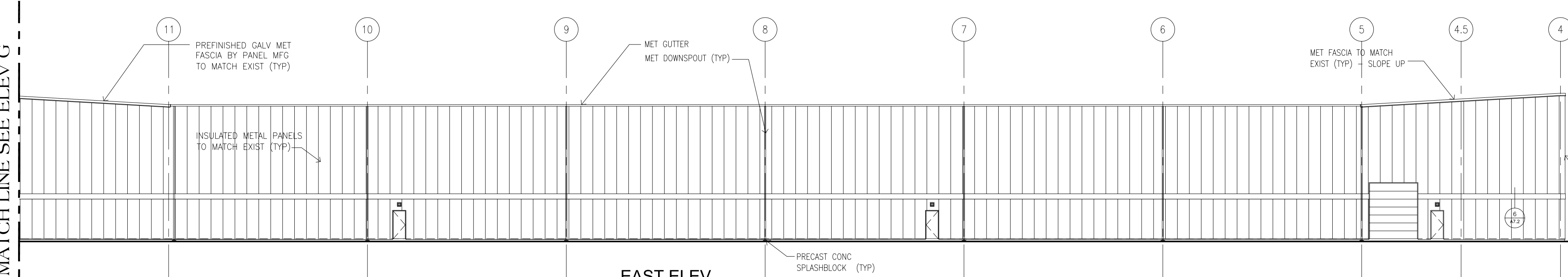
F SOUTH ELEV AT DOCK
SCALE: 1/16" = 1'-0"



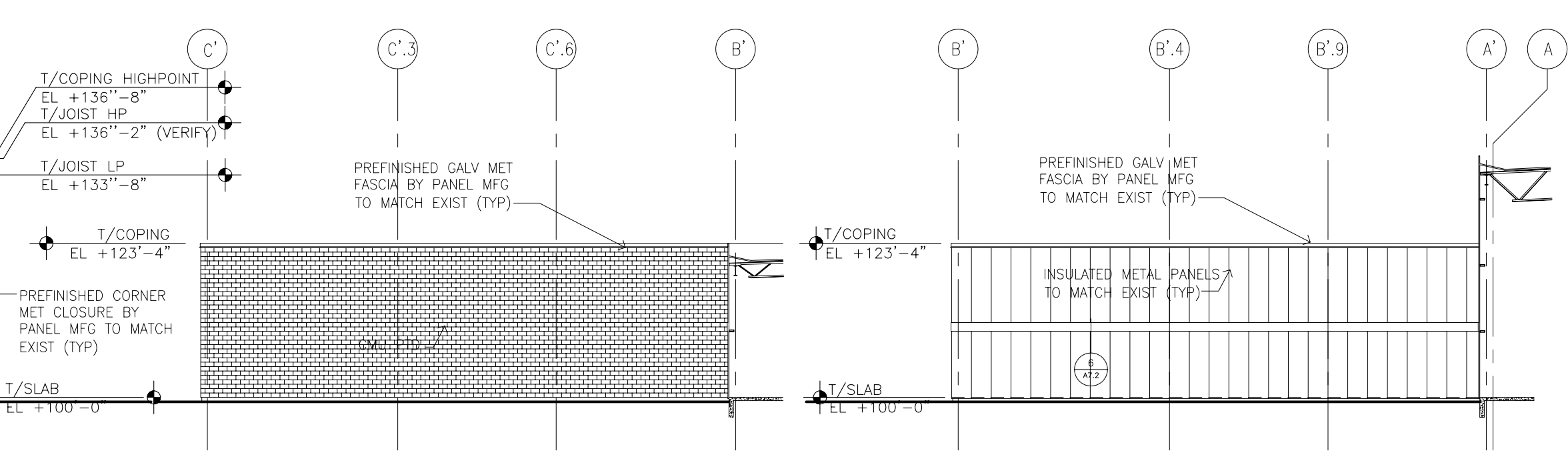
G EAST ELEV SOUTH SECTION
SCALE: 1/16" = 1'-0"



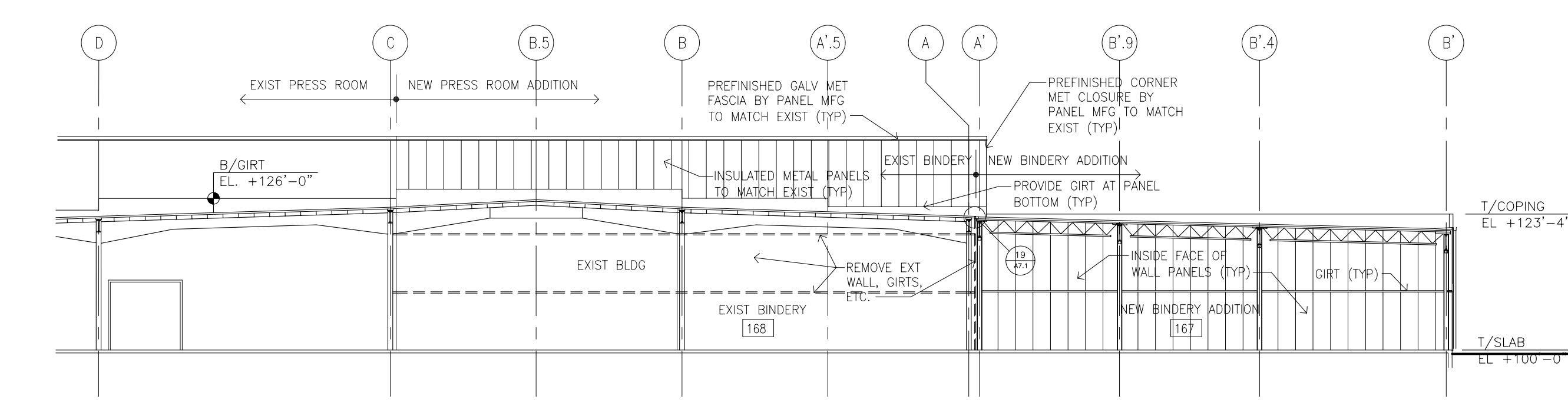
H EAST ELEV NORTH SECTION
SCALE: 1/16" = 1'-0"



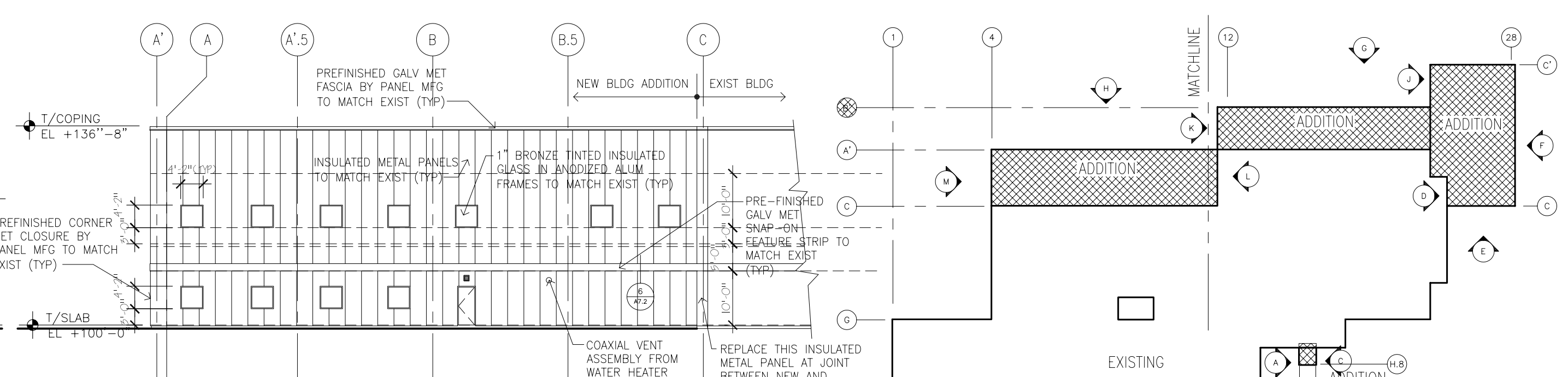
I NORTH ELEV WAREHOUSE ADDITION
SCALE: 1/16" = 1'-0"



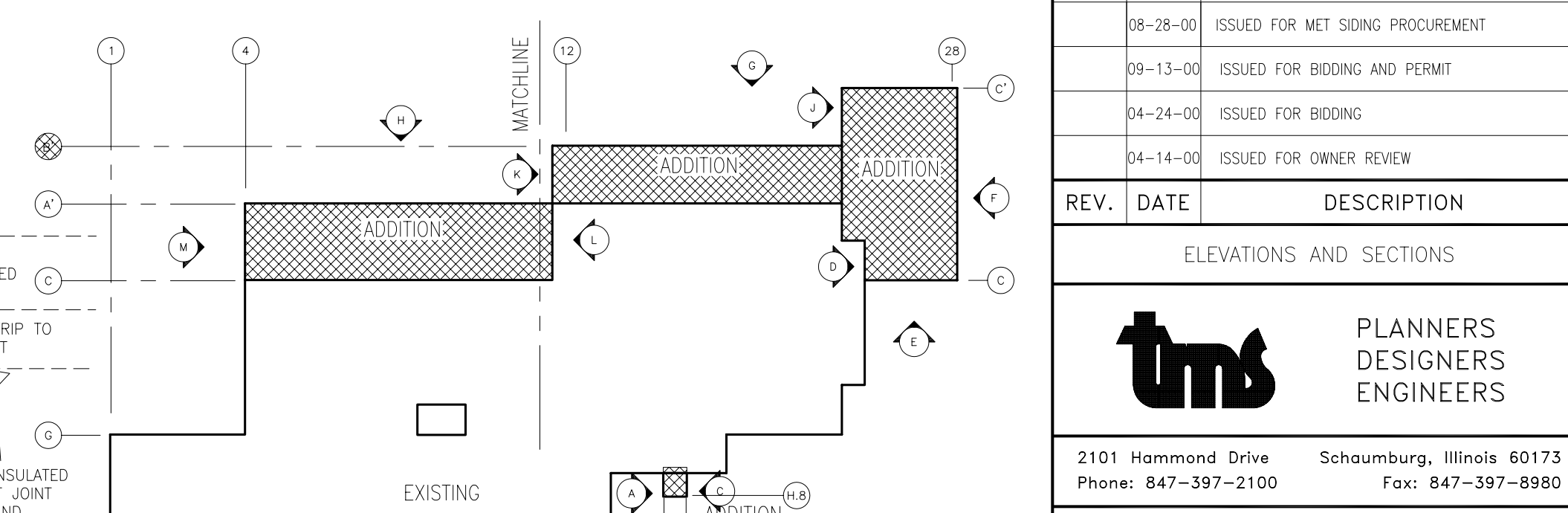
J NORTH ELEV BINDERY ADDITION
SCALE: 1/16" = 1'-0"



K SOUTH ELEV PRESS ROOM ABOVE ROOF & SECT LOOKING NORTH THRU BINDERY ADDITION
SCALE: 1/16" = 1'-0"



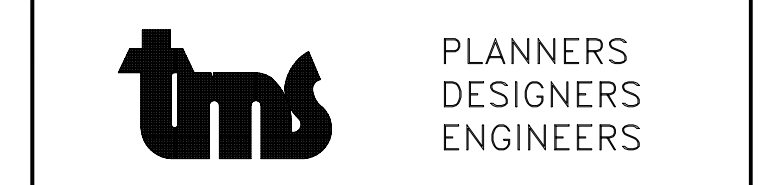
L NORTH ELEV PRESS ROOM
SCALE: 1/16" = 1'-0"



M KEY PLAN

REV.	DATE	DESCRIPTION
10-02-00		ISSUED FOR ADDENDUM NO. 5 & CONSTRUCTION
10-02-00		ADDENDUM NO. 5
08-28-00		ISSUED FOR MET SIDING PROCUREMENT
09-13-00		ISSUED FOR BIDDING AND PERMIT
04-24-00		ISSUED FOR BIDDING
04-14-00		ISSUED FOR OWNER REVIEW

ELEVATIONS AND SECTIONS



2101 Hammond Drive Schaumburg, Illinois 60173
Phone: 847-397-2100 Fax: 847-397-8980

BROWN PRINTING
PRESS ROOM, BINDERY AND WAREHOUSE EXPANSION

11595 McCONNELL ROAD WOODSTOCK, ILLINOIS

DWN. BY	FEH	SCALE	DWG. NO.
APP. BY	FEH	1/16" = 1'-0"	A6.0
CKD. BY	FEH	JOB NO. 6518/6523	
		DATE 4/24/00	