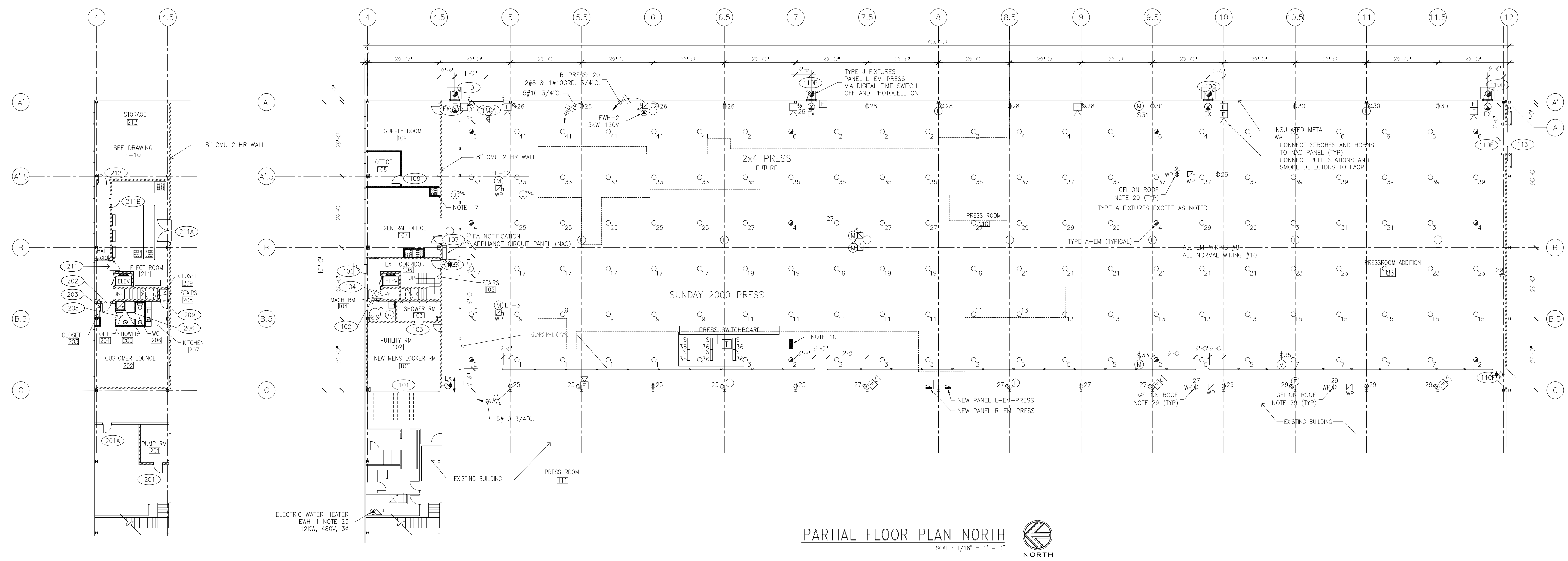


THIS DRAWING IS THE PROPERTY OF TNS. MECHANICAL, ELECTRICAL AND CIVIL TO BE RETURNED UPON REQUEST. IF CHANGES ARE MADE TO THIS DRAWING, THE ORIGINAL DRAWING SHALL BE KEPT ON FILE FOR CONSTRUCTION PURPOSES. ANY REVISIONS TO THIS DRAWING SHALL BE MADE BY THE DESIGNER AND APPROVED BY THE ENGINEER. THE ACCEPTANCE OF THIS DRAWING CONSTITUTES ACCEPTANCE OF THE FOREGOING AGREEMENT.



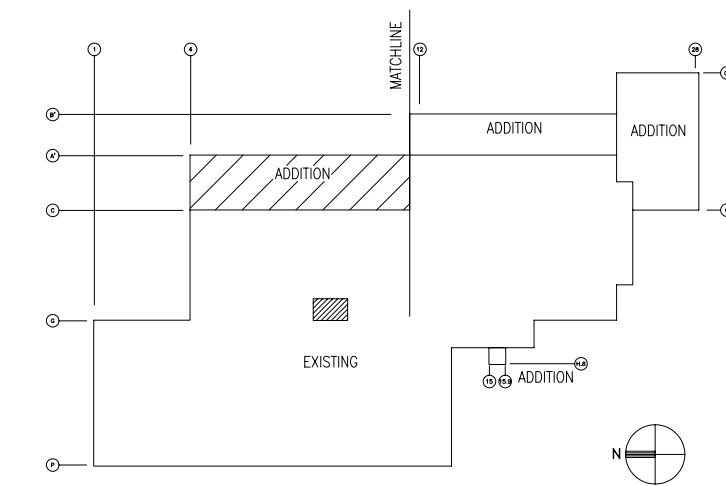
**PARTIAL FLOOR PLAN NORTH**  
SCALE: 1/16" = 1' - 0"  
NORTH

BAILER MOTOR CONTROL CENTER - PROVIDE ALL LABOR, MATERIALS, TOOLS, EQUIPMENT AND SERVICES FOR PROVIDING BAILER CONTROL CENTER (MCC) INCLUDING BUT NOT LIMITED TO HOUSE KEEPING PAD, CIRCUIT BREAKERS, MOTOR STARTERS COMPLETE WITH ALL ACCESSORIES, PILOT DEVICES, FEEDER FROM BUS DUCT TO MCC AND FINAL CONNECTIONS, BRANCH CIRCUITS AND SUB-FEEDERS FROM MCC TO DOWNSTREAM MOTORS AND DEVICES PROVIDED BY OWNER'S BAILER SUB-CONTRACTOR.

EQUIPMENT GROUND BUS										1600A MAIN BREAKER NEMA 12-INSTALLED GASKETED DUST TIGHT			
BAILER MOTOR CONTROL CENTER SQUARE D MODEL 6 MOTOR CONTROL CENTER										WIRING/CONDUIT			
EQUIPMENT NAME	MOD/TYP	HP	FLA	SIZE	TYPE	SPACE	MODEL	PILOT DEVICES (NOTES)	BKR	THERMAL	DISC	WIRING/CONDUIT	
MAIN BREAKER	N/A	N/A	N/A	N/A	72		M61BT1600	U678, Y744	1600	N/A	N/A	BRANCH CIRCUIT WIRING PROVIDED, FURNISHED, INSTALLED BY OWNER'S BAILER CONTRACTOR	
DIVERT FEEDER	N/A	N/A	N/A	N/A	12		M6MBF15	(BREAKER UNIT ONLY) U678	15	N/A	N/A		
DIVERT CONTACTORS	N/A	N/A	N/A	N/A	36		M6MBT36	(EMPTY MOUNTING UNIT) U678	N/A	N/A	N/A		
SUPPLY 9 DIVERT	3/4	1.3	IEC FVR	N/A			LC2D0901G6	(CONTACTOR IN MT UNIT)	N/A	LR2D13X6	N/A		
SUPPLY 10 DIVERT	3/4	1.3	IEC FVR	N/A			LC2D0901G6	(CONTACTOR IN MT UNIT)	N/A	LR2D13X6	N/A		
SUPPLY 11 DIVERT	3/4	1.3	IEC FVR	N/A			LC2D0901G6	(CONTACTOR IN MT UNIT)	N/A	LR2D13X6	N/A		
LEVELER	1	1.6	1 NEMA FVNR	18			M6BC1	U678, FT, P67, X10, X109	3	B 2.40	30		
AIRLOCK E	1	1.6	IEC FVNR	6			M6BH2.1A	U678, FT, P67, X10, C	3	LR2D13X6	30		
POWER PACK	5	6.63	1 NEMA FVNR	12			M6BA7.5	U678, FT, P67, X10, C	15	B 10.2	30		
CONVEYOR	5	6.63	1 NEMA FVNR	12			M6BA7.5	U678, FT, P67, X10, C	15	B 10.2	30		
FILTER ROTATE	15	19	2 NEMA FVNR	12			M6BA15	U678, FT, P67, X10, C	30	B 32	30		
SUPPLY 10	25	30.3	2 NEMA FVNR	12			M6BA25	U678, FT, P67, X10, C	50	B 56	30		
FILTER E FAN	30	36.7	3 NEMA FVNR	18			M6BA50	U678, FT, P67, X10, C	100	CC 59.4	60		
TRANSFER E	40	48.2	3 NEMA FVNR	19			M6BA50	U678, FT, P67, X10, C	100	CC 74.6	60		
SUPPLY 4	60	70.8	4 NEMA FVNR	21			M6BA75	U678, FT, P67, X10, C	250	CC 103	100		
SUPPLY 7	60	70.8	4 NEMA FVNR	21			M6BA75	U678, FT, P67, X10, C	250	CC 103	100		
BAILER D	75	87.6	BY VENDOR	15			M6BA125	(BREAKER UNIT ONLY) U678	125	N/A	N/A		
SUPPLY 11	75	87.6	4 NEMA FVNR	21			M6BA75	U678, FT, P67, X10, C	250	CC 132	100		
SUPPLY 6	125	142	5 NEMA FVNR	42			M6BA125	U678, FT, P67, X10, C	250	DD 160	200		
SHREDDER	200	222	SSRV	72			M6S24BA	U678, FT, P67, X119, C	350	SOLID ST	400		
MOTORIZED DOOR	1	2							5	N/A	N/A	3#12 & 1#12 GRD.-3/4"	
MOTORIZED DOOR	1	2							15	N/A	N/A	3#12 & 1#12 GRD.-3/4"	
EXHAUST FAN EF-11	1	2							15	N/A	N/A	3#12 & 1#12 GRD.-3/4"	
SYSTEM SUMMARY													
TOTAL HORSEPOWER													719.25
TOTAL FULL LOAD AMPS													835.96
MINIMUM MAIN BREAKER PER (NEC)													1044.95
MINIMUM MAIN BREAKER INSTALLED													1600
SYSTEM CAPACITY USED													65%
SYSTEM NOTES													
(U678) NAMEPLATE (WHITE ON GRAY)			(FT) 120 VOLT FUSED CONTROL POWER TRANSFORMER			(C) HAND-OFF-AUTO SELECTOR SWITCH							
(P67) GREEN "ON" PILOT LIGHT			(P35) YELLOW "REVERSE" PILOT LIGHT			(X10) 1 N.O. AUXILIARY "RUN" CONTACT							
(X10) 2 N.O. AUXILIARY "RUN" CONTACTS			(X109) 1 N.O. AUXILIARY "REVERSE RUN" CONTACT			(Y144) SHUNT TRIP (ALL MAIN BREAKERS)							
(T) AUTO START ONLY (NO SWITCH)			(X119) 1 N.O. 1 N.C. "AUXILIARY RUN" CONTACT										
COMMENTS: ALL (DISC) NON-FUSABLE DISCONNECT SWITCHES TO BE CLASS 3110HU*** AWK YPE													
ALL (BKR) COMBINATION STARTER BREAKERS TO BE MAG-GARD ADJUSTABLE INSTANTANEOUS TRIP TYPE													
ALL IEC REVERSING CONTACTORS AND OVERLOAD RELAYS FOR DIVERTS TO BE SHIPPED LOOSE (MOUNTING IN MT UNIT BY CONTRACTOR)													
ALL MAIN BREAKERS TO BE TOP FEED IN LEFT MOST SECTION													
GFP WILL NOT ACCEPT RED "RUN" PILOT LIGHTS ON ANY STARTER													

NOTES:

- PROVIDE UNISTRUT RACK TO SUPPORT TRANSFORMER BEHIND PRESS SWITCHBOARD. PROVIDE UNISTRUT RACK 15'-0" SOUTH OF TRANSFORMER FOR MOUNTING PANEL BOARD.
- ALL RECEPTACLES HOMERUN TO PANEL R-PR #10 AWG MINIMUM.
- CONDENSATE PUMPS - DUPLEX, 1/2HP AT 120V. PROVIDE 2#10 & 1#12GRD.-3/4". TO 1P-20A BREAKER FOR EACH PUMP. PROVIDE 20A DISCONNECT SWITCH FOR EACH PUMP.
- ALL NORMAL LIGHTING #8 AWG - PANEL L-PRESS EXCEPT AS NOTED.
- ALL EMERGENCY LIGHTING #8 AWG - PANEL L-EM-PRESS, EXCEPT AS NOTED.
- ALL 120 VOLT CIRCUITS #10 AWG - PANEL R-PRESS, EXCEPT AS NOTED.
- COORDINATE SERVICE ENTRANCE FROM COMED SECONDARY BOXOUTS UP THROUGH GENERAL OFFICE AREAS INTO BOTTOM ENTRANCE OF MAIN SWITCHBOARD WITH ALL APPLICABLE TRADES PRIOR TO DOING ANY WORK.
- REMOVE, RELOCATE, EXTEND, REWIRE EXISTING CONDUITS AND CIRCUITS INSTALLED ON EXISTING EXTERIOR WALLS TO BE REMOVED. PROVIDE ALL REQUIRED JUNCTION BOXES, SPLICES, WIRING, FOR REROUTING EXISTING CIRCUITS AND ALL FINAL CONNECTION FOR A COMPLETE REINSTALLATION OF CONDUITS. REROUTE EXISTING CONDUITS PRIOR TO EXTERIOR WALL REMOVAL. MAINTAIN CONTINUITY OF EXISTING CIRCUITS AT ALL TIMES. DOWNTIME AT THE CONVENIENCE OF BROWN PRINTING COMPANY. PROVIDE PRIOR WRITTEN NOTICE.
- NEAR COLUMN 4/C PROVIDE TEMPORARY SUPPORTS FOR EXISTING CONDUITS TO REMAIN TO ALLOW FOR NEW SIDING TO BE INSTALLED. AFTER NEW SIDING IS INSTALLED SECURE CONDUITS TO NEW BUILDING STRUCTURE. PROVIDE ALL REQUIRED LABOR, MATERIALS, TOOLS, EQUIPMENT FOR COMPLETE TEMPORARY SUPPORT AND SUPPORTING EXISTING CONDUITS TO NEW BUILDING STRUCTURE.
- PROVIDE FEEDER WITH GROUNDING CONDUCTOR FROM SWITCHBOARD 3-NORTH TO PRESS SWITCHBOARD. MAKE ALL FINAL CONNECTIONS. PROVIDE SUB-FEEDER WITH GROUNDING FROM PRESS SWITCHBOARD TO DRY TYPE TRANSFORMER AND 120/208V, 3ø, 4W PANELBOARD WITH MAIN BREAKER. PROVIDE FEEDER WIRING, SUB-FEEDER WIRING WITH GROUNDING CONDUCTORS. PROVIDE DRY TYPE TRANSFORMER AND 120/208V, 3ø, 4W PANELBOARD. MAKE ALL FINAL CONNECTIONS. VERIFY EXACT LOCATION OF PRESS SWITCHBOARD PRIOR TO ROUGH-IN.
- RECEPTACLES PROVIDED IN PRESSROOM, BINDERY, WAREHOUSES, SHALL BE INSTALLED AT 4'-0" AFF IN COLUMN WEB WHERE APPLICABLE.
- ALL AUDIBLE HORNS AND STROBES WIRING HOMERUN TO NAC PANELS.
- ALL AUDIBLE HORNS AND STROBES SHALL BE MOUNTED 80 INCHES AFF.
- ALL RTU UNITS SHALL BE EQUIPPED WITH NEMA 3R NON-FUSED DISCONNECT MEANS.
- PROVIDE NON-FUSED DISCONNECT MEANS FOR EACH UNIT HEATER; EACH HOT WATER HEATER; EACH MOTOR; EACH OVERHEAD DOOR OPERATOR; EACH DOCK LEVELER; EACH ELECTRIC HEATER AND EACH HUMIDIFIER.
- PROVIDE (2) 120V-20A CIRCUITS FROM R-EM EMERGENCY PANEL TO NEW FIRE ALARM CONTROL PANEL - 4#10-3/4".
- PROVIDE (1) 120V-20A SEPARATE CIRCUIT FROM EMERGENCY PANEL R-EM-PRESS TO EACH NAC PANEL.
- EXIT DIRECTIONAL SIGNS - ALL EXIT SIGNS SHALL BE WIRED TO SEPARATE AND INDEPENDENT DEDICATED CIRCUITS (A.N) #10 WIRE. INSTALLED IN A SEPARATE CONDUIT SYSTEM. PROVIDE LOCK-ON DEVICE FOR EACH CIRCUIT BREAKER.
- EMERGENCY LIGHTING. PROVIDE #10 WIRE. ALL EMERGENCY FIXTURES EQUIPPED WITH STANDBY QUARTZ LAMP ILLUMINATED DURING RE-STRIKE TIME. PROVIDE A SEPARATE CONDUIT SYSTEM. PROVIDE LOCK-ON DEVICE FOR EACH CIRCUIT BREAKER.
- PRESSROOM, BINDERY, WAREHOUSE, LOADING DOCK LIGHTING. ALL CIRCUIT BREAKERS FOR PANEL SWITCHBOARD LIGHTING CIRCUITS SHALL BE SWD TYPE.
- ALL DISCONNECTS SHALL BE READILY ACCESSIBLE MOUNTED.
- PROVIDE FLEXIBLE LIQUIDTIGHT CONDUIT FOR CONNECTIONS TO ALL MOTORS, TRANSFORMERS, AND EQUIPMENT SUBJECT TO MOVEMENT OR VIBRATION.
- ELECTRIC WATER HEATER EWH-1 (12KW, 480V, 3ø) SCHEDULED FOR REPLACEMENT. DISCONNECT EXISTING EWH-1. RECONNECT NEW EWH-1 (12KW, 480V, 3ø) TO EXISTING WIRING. MAKE ALL FINAL CONNECTIONS. PROVIDE DISCONNECT MEANS.
- PROVIDE GFI WEATHERPROOF 120V-20A RECEPTACLE AT EACH RTU UNIT (TYPICAL THROUGHOUT).



KEY PLAN  
ATTENTION  
This drawing is PRELIMINARY and is not intended for Construction.

9-8-00

REV.	DATE	DESCRIPTION
4-24-00		ISSUED FOR BIDDING
		ELECTRICAL PLAN - NORTH

**PLANNERS DESIGNERS ENGINEERS**

2101 Hammond Drive Schaumburg, Illinois 60173  
Phone: 847-397-2100 Fax: 847-397-8980

**BROWN PRINTING**  
PRESS ROOM, BINDERY AND WAREHOUSE EXPANSION

11595 MCCONNELL ROAD WOODSTOCK, ILLINOIS

DWN. BY AHC	SCALE AS NOTED	DWG. NO.
APP. BY JDV	JOB NO. 6518	E3.0
CKD. BY JDV	DATE 04/14/00	