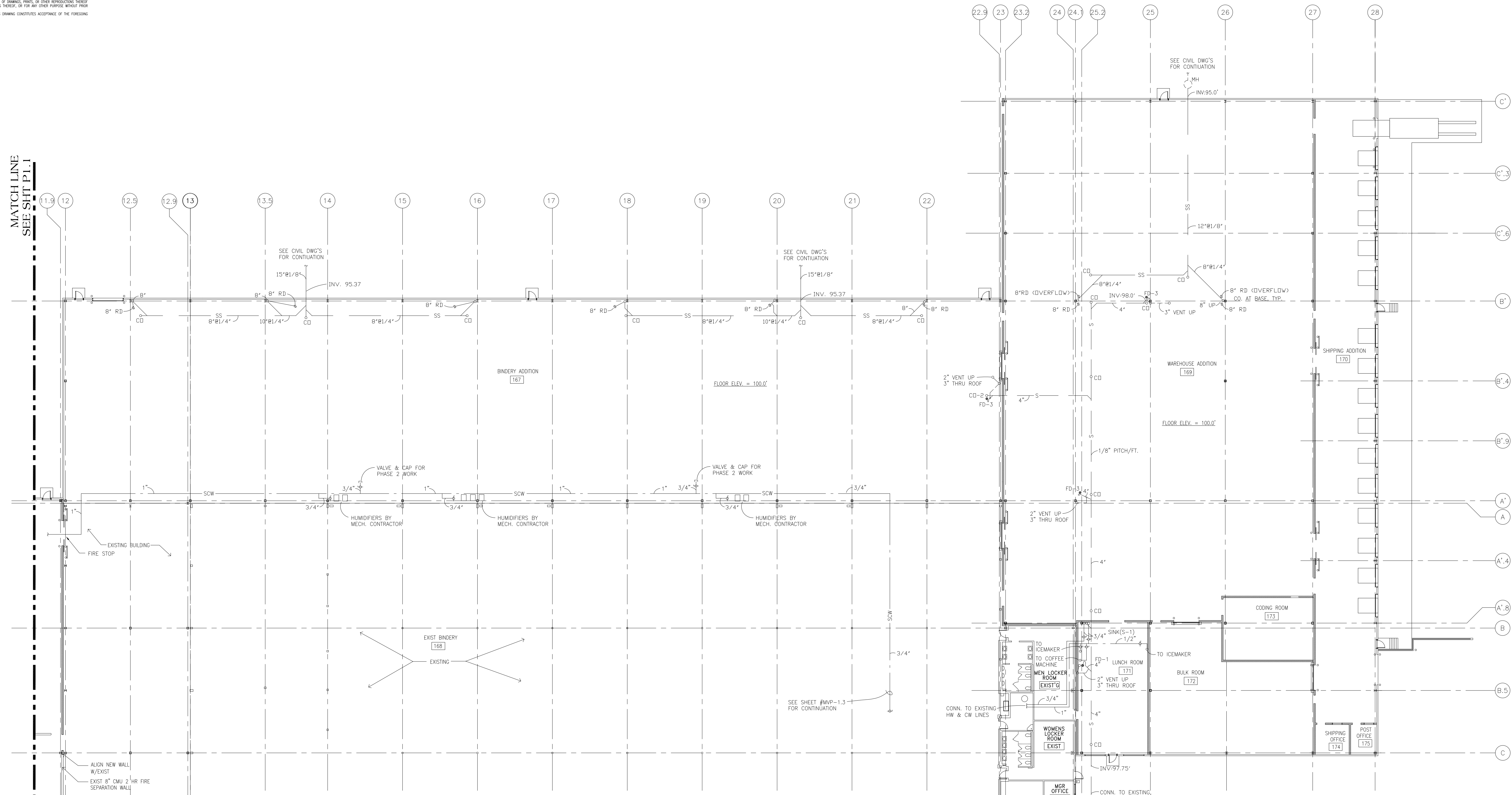


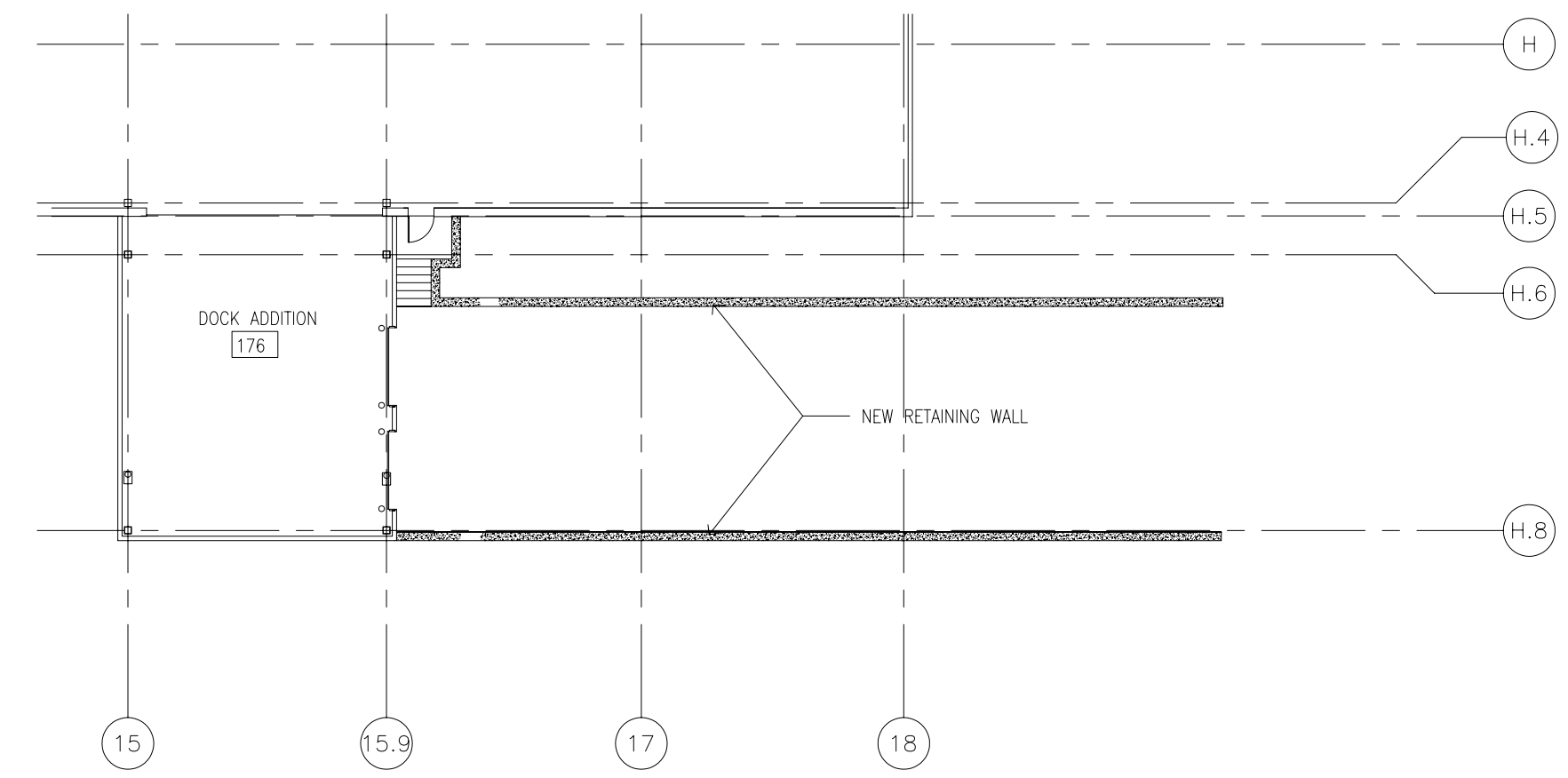
THIS DRAWING IS THE PROPERTY OF TMS MECHANICAL SYSTEMS AND IS TO BE RETURNED UPON REQUEST. IT CONTAINS CONFIDENTIAL INFORMATION WHICH MUST NOT BE DISCLOSED TO ANYONE OR USED FOR CONSTRUCTION WITHOUT PRIOR WRITTEN CONSENT. IT IS STATED WITH THE EXPRESS AGREEMENT THAT THE DRAWING AND INFORMATION THEREON WILL NOT BE REPRODUCED, COPIED, REPRODUCED, COVERED OR OTHERWISE EXPOSED OR BE USED IN WHOLE OR IN PART TO ASSIST IN MAKING OR TO OBTAIN ANY INFORMATION FOR THE MAKING OF CHANGES, PRINTS, OR OTHER REPRODUCTIONS THEREOF OR TO ASSIST IN ANY PART THEREOF, OR FOR ANY OTHER PURPOSE WITHOUT PRIOR WRITTEN CONSENT. THE ACCEPTANCE OF THIS DRAWING CONSTITUTES ACCEPTANCE OF THE FOREGOING AGREEMENT.

MATCH LINE
SEE SHT. P1.1

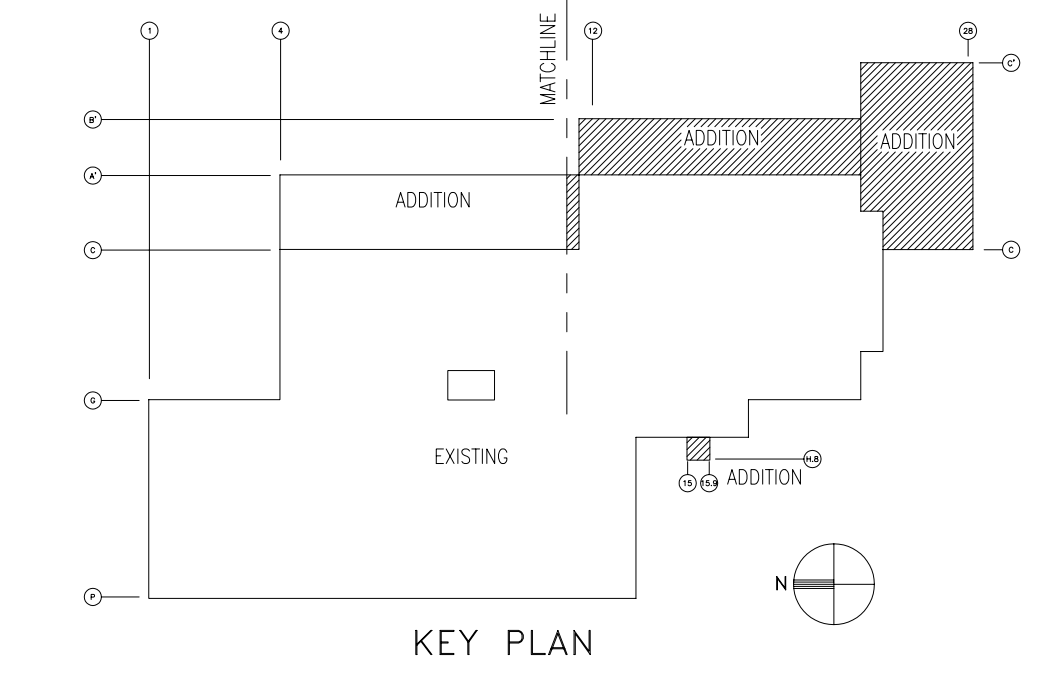
MATCH LINE
SEE SHT. P1.1



PARTIAL MECHANICAL FLOOR PLAN—SOUTH SECTION
SCALE: 1/16" = 1' - 0"
NORTH



PARTIAL FLOOR PLAN OF DOCK ADDITION
SCALE: 1/16" = 1' - 0"
NORTH



ATTENTION
This drawing is PRELIMINARY and is not intended for Construction.

9-13-00	ISSUED FOR BIDDING & PERMITS	
4-24-00	ISSUED FOR BIDDING	
4-14-00	ISSUED FOR OWNER'S REVIEW	
REV.	DATE	DESCRIPTION
PLUMBING PLAN - SOUTH		
tms PLANNERS DESIGNERS ENGINEERS		
2101 Hammond Drive Schaumburg, Illinois 60173 Phone: 847-397-2100 Fax: 847-397-8980		
BROWN PRINTING PRESS ROOM, BINDERY AND WAREHOUSE EXPANSION		
11595 MCCONNELL ROAD WOODSTOCK, ILLINOIS		
DWN. BY	SCALE 1/16" = 1'-0"	DWG. NO. P 1.2
APP. BY	JOB NO. 6518/6523	
CKD. BY	DATE 7/24/00	